

CERTIFIED LAND CORNER RESTORATION

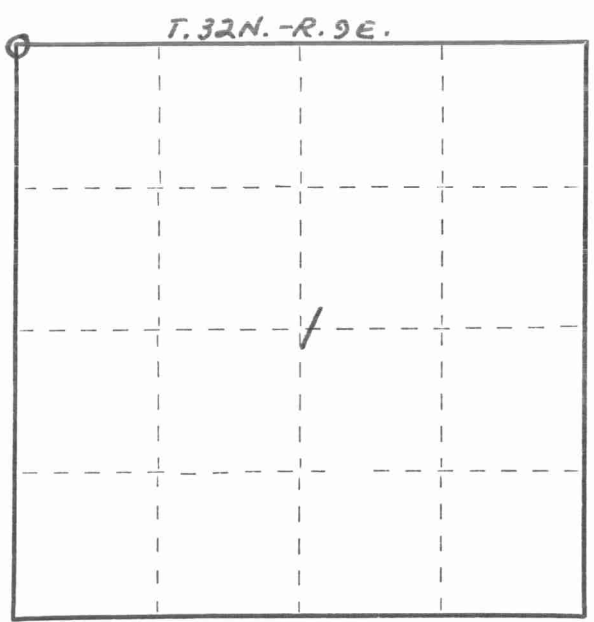
Index No. A-21

State of Wisconsin }
 County of LANGLADE } ss.

I WILLIAM F. KELLY, do hereby certify that on the 26TH day of SEPTEMBER, 19 77, I found evidence of the SECTION corner of SECTIONS 1, 2, 35 & 36 Township 32 & 33, North, Range 9E, Fourth Principal Meridian, as described hereon; and that from this evidence I established a new monument and accessories as described hereon to perpetuate the original location of this corner.

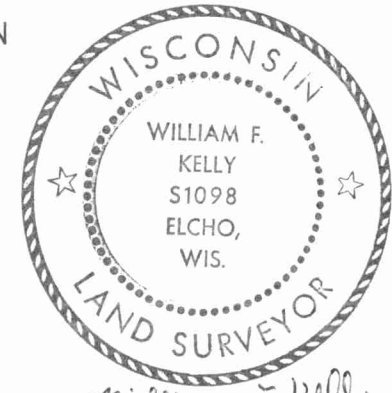
Resident witnesses:

FORM 985 H. C. MILLER CO., MILWAUKEE



○ = Corner monument restored.

History of original corner establishment:



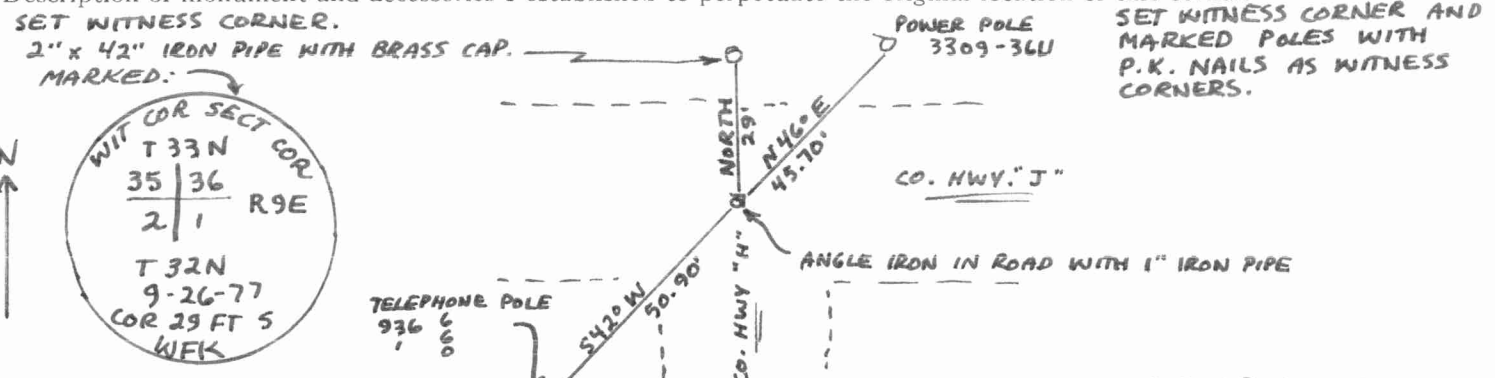
William F. Kelly 9-26-77

Description of corner evidence found:

LOCATED N.W. CORNER SECTION 1 T. 32N. - R. 9E. FROM OWENS ILLINOIS CONTROL SURVEY AND NOTES FROM PREVIOUS SURVEY FROM M. HUTCHINSON.

SEE NOTE ON REVERSE 1/4/06 D.T.

Description of monument and accessories I established to perpetuate the original location of this corner.



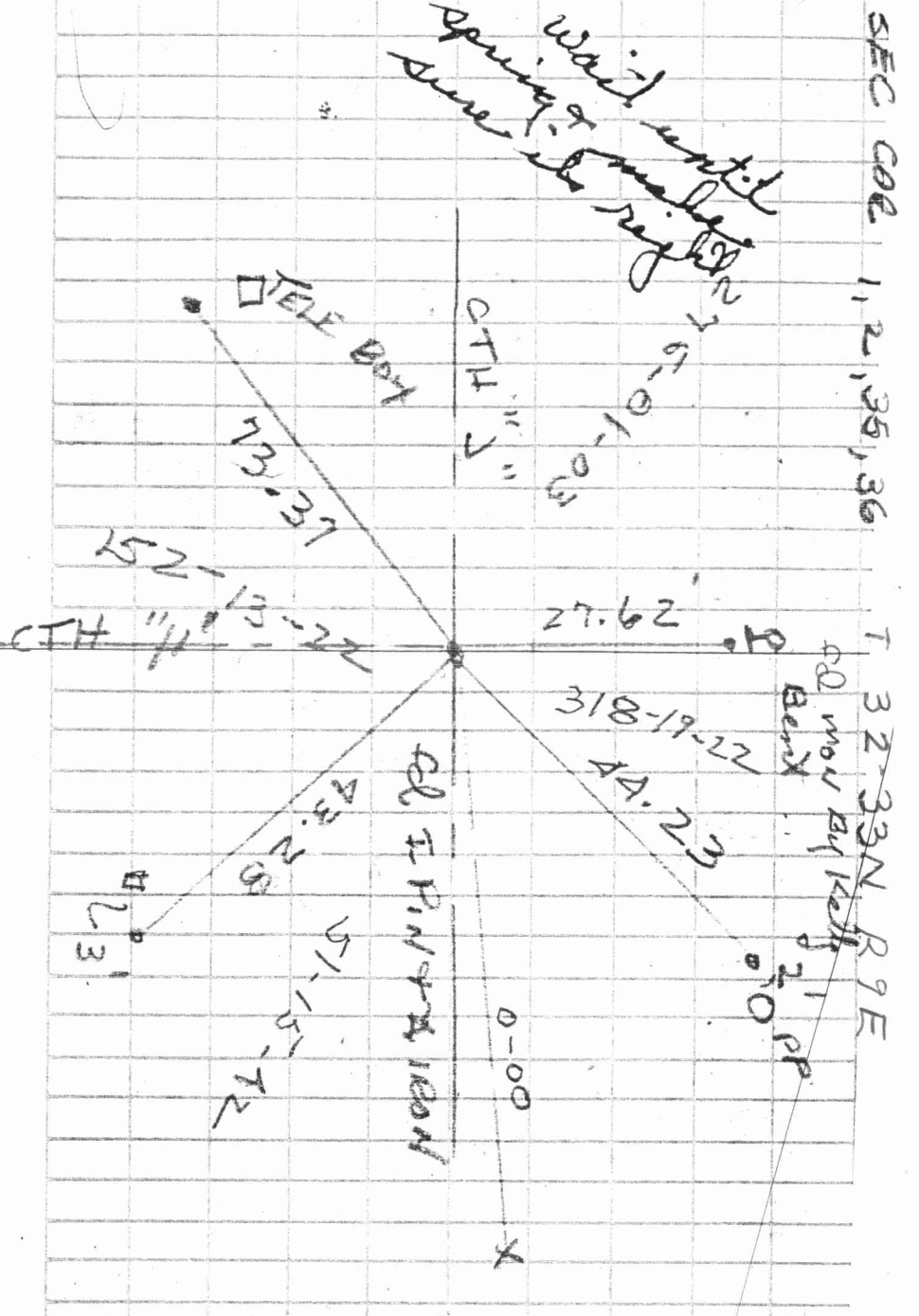
Dated at ELCHO, Wis., this 26TH day of SEPTEMBER, 19 77

Signature William F. Kelly Title REGISTERED LAND SURVEYOR Registration No. S1098
 (County Surveyor, Registered Land Surveyor, or other duly authorized official)

Office of Register of Deeds, County of _____, I hereby certify that the within instrument was filed in this office for record on the _____ day of _____, 19 _____ at _____ o'clock _____ M.

(Register of Deeds)

By _____ Deputy



SEC COE 1, 2, 35, 36 T 32 33N R 9E

The above is a copy of field notes from the fall of 2005 by Tom Armott. He set and measured new ties to the section corner as shown, but by his note on the left edge he apparently felt this corner should be investigated further. He didn't need this corner for the survey work he was doing. He was working on a project in Section 1 for Mark Marshall and he traversed the perimeter of Section 1, including occupation of this corner as one of his traverse points, but never filed a map on the project and his field notes contain no staking information.

From other corners he did around that time, it is safe to assume that his solid circle ties are $\frac{3}{4}$ " x 30" rebars set flush.

David E. Thusty, RLS
January 4, 2006

