

LANGLADE COUNTY U.S. PUBLIC LAND CORNER RESTORATION

The South Quarter corner of Section 34, T. 33 N., R. 9 E., Langlade County, WI.

Corner was: (check all that apply)

4330934 0020

- Restored through acceptance of an obliterated evidence location.
- Restored through acceptance of a found perpetuated location.
- Determined to be lost and re-established through proportionate methods.
- Show bearings and distances to PLSS corners used for proportioning, and show original distances.
- Restored/recovered/re-established in a location that differs from a previously established position.
- (Show difference in plan view below).
- Check here if additional information is shown on the reverse side of this form.

Describe record evidence, recovered physical evidence, occupational evidence, testimonial evidence and all other evidence considered in the recovery/restoration of the corner.

The original corner was established in 1859 by Hiram Fellows. Original bearing trees: spruce, 10", N14 W, 14 links and a spruce, 12", S24 W, 10 links. In 1902, Webley, in FB126-19 said "E from NW cor S. 3, 38.65 1/2. Fnd st & one Obt. Set stone for cor. 6 x 8 x 12, x on top. New BT's: tam, 16", S 43 1/2 E, 75 1/2 links and a tam, 12", S 6 1/2 W, 30 links. 07/15/08 D. Tlusty found 1" iron pipe 0.4' under pavement. Set and measured new ties as shown below. Note, at the time this work was done, I did not know about the Webley stone, therefore, it was not dug for. It should be dug for at some point.

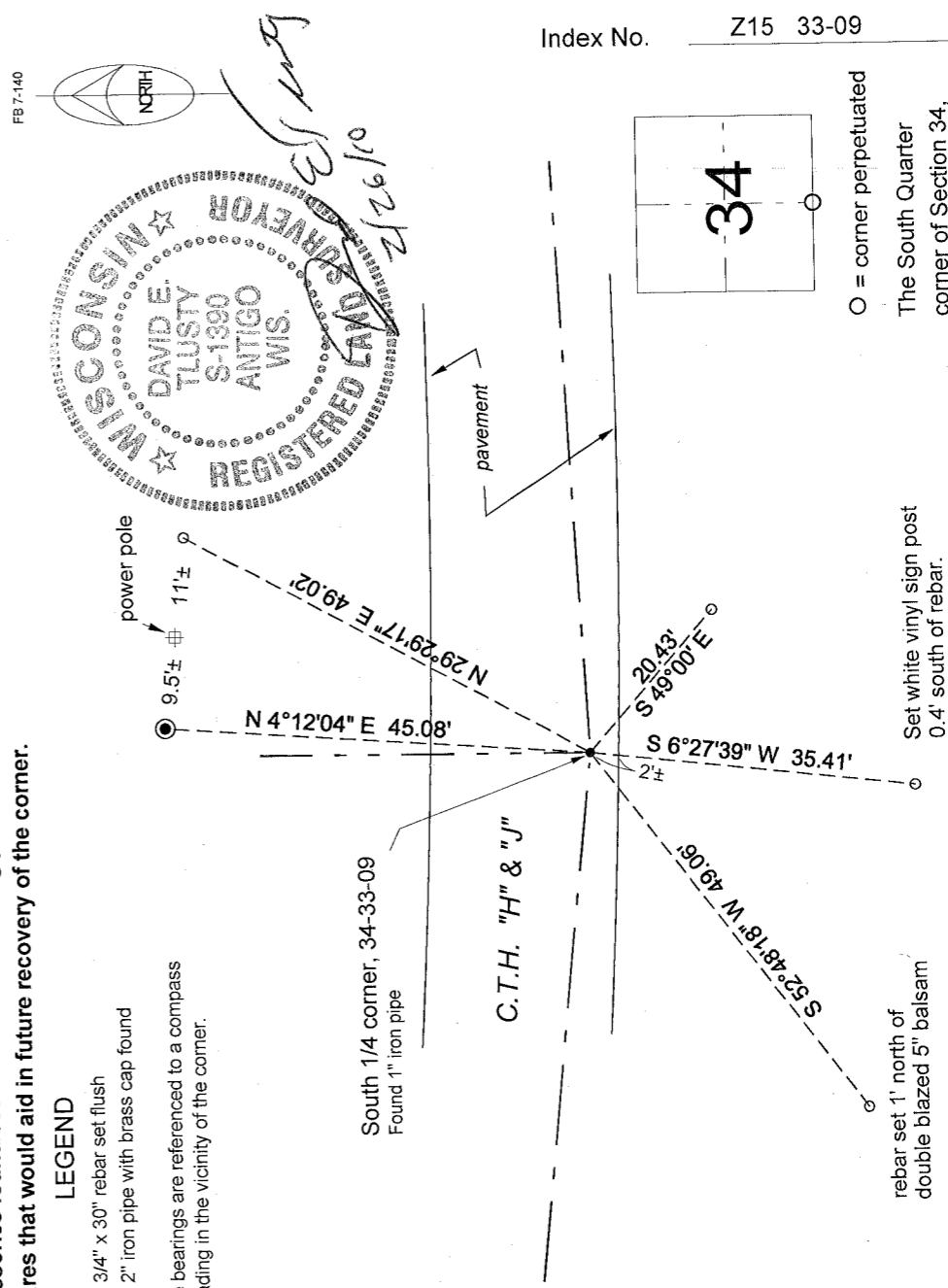
Physical description of the monument set:

I left the existing 1" iron pipe in place.

Describe the accessories used to perpetuate the corner. Include a plan view drawing and accessories found/set. Describe measuring point on bearing trees. Show any topographic features that would aid in future recovery of the corner.

LEGEND

- 3/4" x 30" rebar set flush
 - 2" iron pipe with brass cap found
- Tie bearings are referenced to a compass reading in the vicinity of the corner.



Index No.

Z15 33-09

○ = corner perpetuated

The South Quarter corner of Section 34, T. 33 N., R. 9 E., Langlade County, WI

I, David E. Tlusty, Registered Land Surveyor, as Langlade County Surveyor, certify that the corner location on this record was determined by me and that this U.S. Public Land Survey Monument Record is correct to the best of my knowledge and belief.