

CERTIFIED LAND CORNER RESTORATION

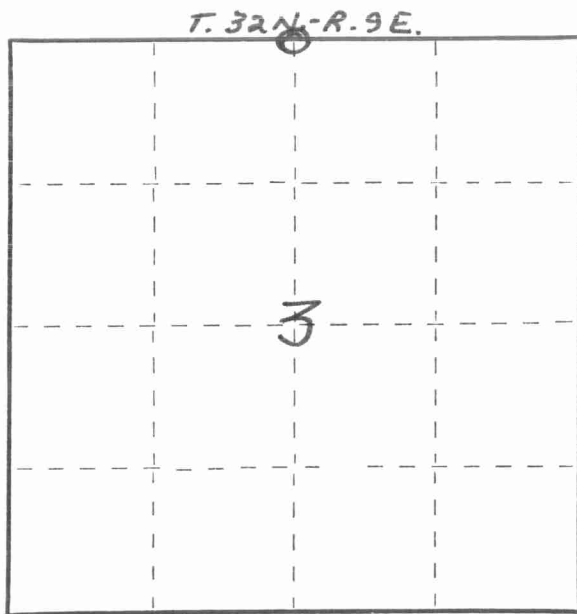
Index No. A-15

State of Wisconsin }  
 County of LANGLADE } ss.

I WILLIAM F. KELLY, do hereby certify that on the 26<sup>TH</sup> day of SEPTEMBER, 1977, I found evidence of the 1/4 corner of SECTIONS 3 & 34 Township 32 & 33, North, Range 9E, Fourth Principal Meridian, as described hereon; and that from this evidence I established a new monument and accessories as described hereon to perpetuate the original location of this corner.

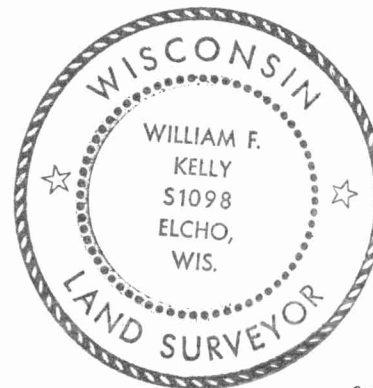
Resident witnesses:

.....  
 .....  
 .....



○ = Corner monument restored.

History of original corner establishment:



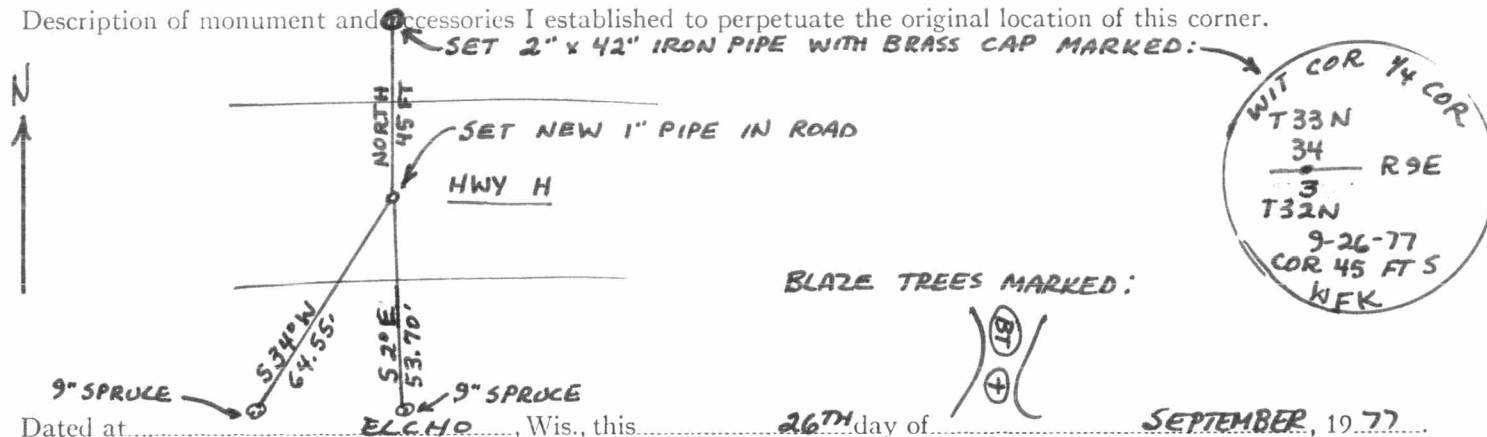
*William F. Kelly 9-26-77*

Description of corner evidence found:

**CORNER LOCATED ON CONTROL SURVEY OF SECTION 3 BY OWENS-ILLINOIS FROM PREVIOUS SURVEY BY M. HUTCHINSON AND ORIGINAL GOVERNMENT NOTES. FOUND OLD IRON UNDER ROAD SURFACE.**

NOTE: CORNER IS ON SOUTH SIDE OF ROAD AS TRAVELLED

Description of monument and accessories I established to perpetuate the original location of this corner.



Dated at ELCHO, Wis., this 26<sup>TH</sup> day of SEPTEMBER, 1977.

Signature William F. Kelly Title REGISTERED LAND SURVEYOR Registration No. S 1098  
 (County Surveyor, Registered Land Surveyor, or other duly authorized official)

Office of Register of Deeds, County of \_\_\_\_\_, I hereby certify that the within instrument was filed in this office for record on the \_\_\_\_\_ day of \_\_\_\_\_, 19\_\_\_\_ at \_\_\_\_\_ o'clock \_\_\_\_\_ M.

(Register of Deeds)

By \_\_\_\_\_ Deputy

FORM 985 H. C. MILLER CO., MILWAUKEE