

CERTIFIED LAND CORNER RESTORATION

Index No. A-17

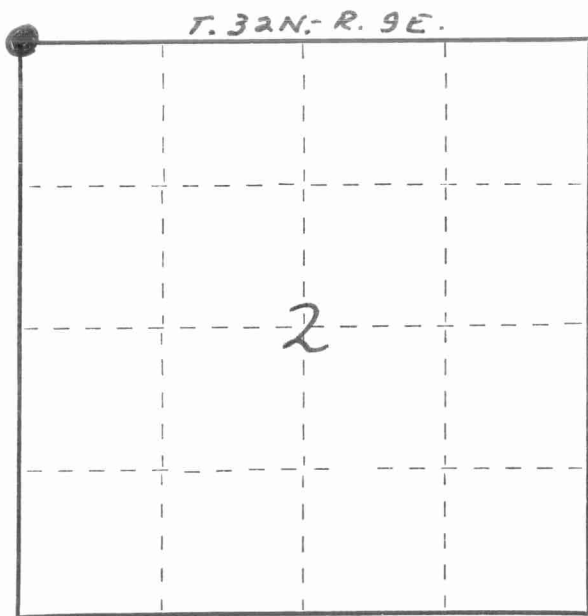
State of Wisconsin }
County of LANGLADE } ss.

I WILLIAM F. KELLY, do hereby certify that on the 26TH day of SEPTEMBER, 1977, I found evidence of the SECTION corner of SECTIONS 2, 3, 34 & 35 Township 32 & 33, North, Range R. 9E, Fourth Principal Meridian, as described hereon; and that from this evidence I established a new monument and accessories as described hereon to perpetuate the original location of this corner.

Resident witnesses:

.....
.....
.....

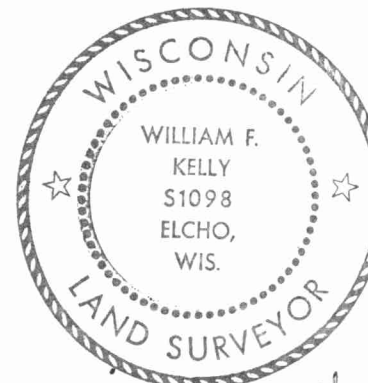
FORM 985 H. C. MILLER CO., MILWAUKEE



○ = Corner monument restored.

History of original corner establishment:

*1903 WEBLEY FOUND BOTH OBT'S
MARKED NEW HGM 15 558 E 77 1/2
ELM 8 N 1 1/4 E 52 1/2
SET STONE 6 X 8 X 18 + ON TOP*

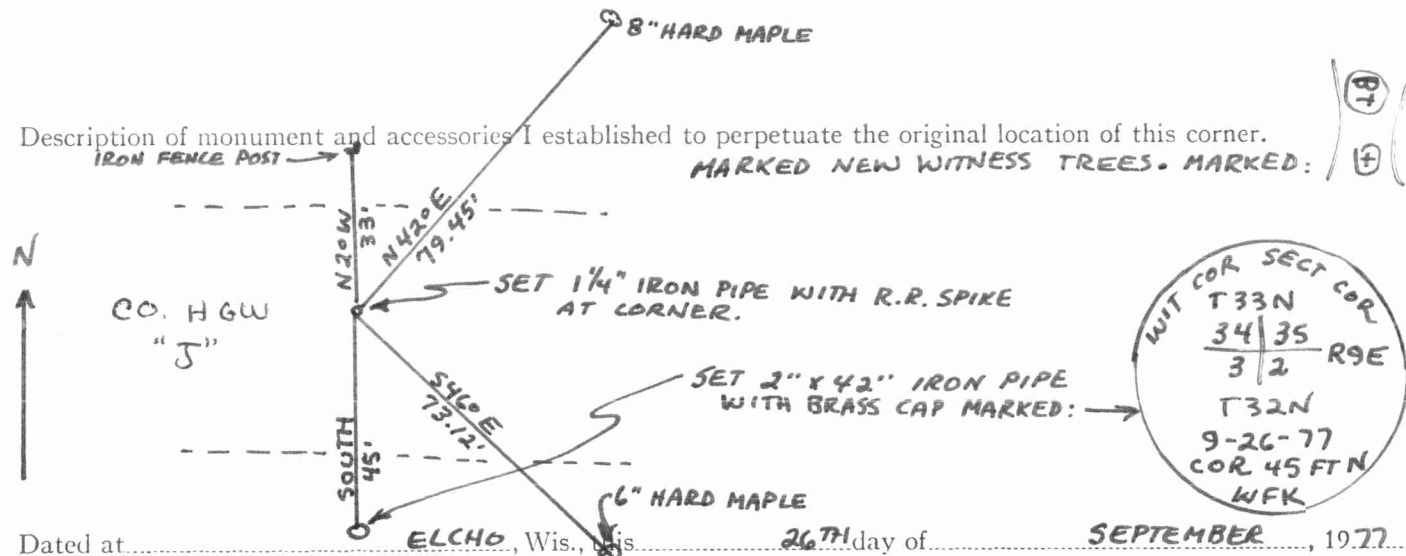


William F. Kelly 9-26-77

Description of corner evidence found:

LOCATED N.W. CORNER SECTION 2 T. 32N. - R. 9E. FROM CONTROL SURVEY BY OWENS ILLINOIS AND FROM SURVEY RECORDS OF M. HUTCHINSON. FOUND PROPERTY CORNER 33' NORTH OF SECTION CORNER.

Description of monument and accessories I established to perpetuate the original location of this corner.



Dated at....., Wis., this 26TH day of SEPTEMBER, 1977.

Signature William F. Kelly Title REGISTERED LAND SURVEYOR Registration No. S1098
(County Surveyor, Registered Land Surveyor, or other duly authorized official)

Office of Register of Deeds, County of....., I hereby certify that the within instrument was filed in this office for record on the..... day of....., 19..... at..... o'clock..... M.

(Register of Deeds)

By..... Deputy