

# LANGLADE COUNTY U.S. PUBLIC LAND CORNER RESTORATION

The Southeast corner of Section 33, T. 33 N., R. 9 E., Langlade County, WI.

**Corner was: (check all that apply)**

4330933 0000

- Restored through acceptance of an obliterated evidence location.
- Restored through acceptance of a found perpetuated location.
- Determined to be lost and re-established through proportionate methods.
- Show bearings and distances to PLSS corners used for proportioning, and show original distances).
- Restored/recovered/re-established in a location that differs from a previously established position.
- (Show difference in plan view below).
- Check here if additional information is shown on the reverse side of this form.

**Describe record evidence, recovered physical evidence, occupational evidence, testimonial evidence and all other evidence considered in the recovery/restoration of the corner.**

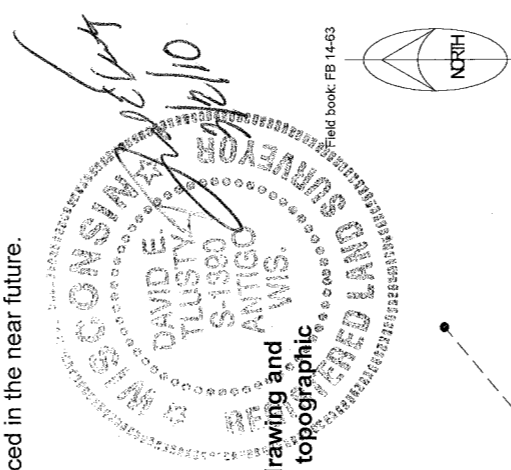
The original corner was established in 1859 by Hiram Fellows. Original bearing trees: tamarac, 12", N55W, 15 links; tamarac, 8", S36E, 25 links; birch, 15", N32E, 27 links and a tamarac, 6", S44W, 38 links. In 1915, Hutchinson measured 2593.1' from the quarter corner west of here, to this corner and called it a "stone 10 x 12 x 16 + ". On 6/23/1936, C.H. Parker, Jr. civil engineer, while surveying part of the south half of 32-9 for the Resettlement Administration noted: "No attempt was made to find the section cor common to Sections 33-34-4 & 3". On 5/17/1990, former surveyor Kelly said "Set RR spk over existing iron in road". He also set 3 - 1" iron pipe reference ties and a witness monument 06/18/1997. D. Tlusty, Brian Markowski found Kellys RR spike and re-measured his ties as shown below. Did not dig for stone mentioned by Hutchinson. It should be dug for at some point to verify the Kelly location. I made these ties only to preserve the location of the railroad spike, as this intersection is to be resurfaced in the near future.

**Physical description of the monument set:**

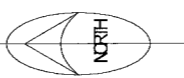
I left the existing railroad spike in place.

**Describe the accessories used to perpetuate the corner. Include a plan view drawing and accessories found/set. Describe measuring point on bearing trees. Show any topographic features that would aid in future recovery of the corner.**

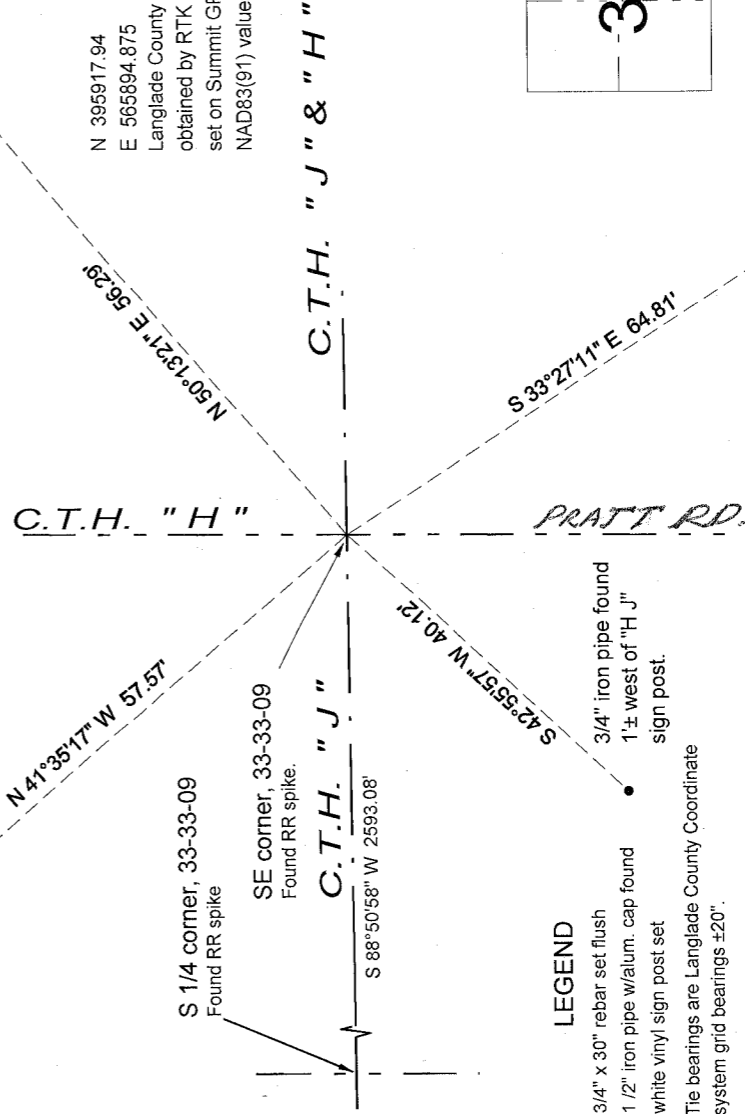
- 3/4" iron pipe found
- 9± SW of stop sign.



Field book: FB 14-63



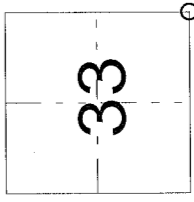
N 395917.94  
E 565894.875  
Langlade County Coordinates  
obtained by RTK GPS with base  
set on Summit GPS, using published  
NAD83(91) values on base.



**LEGEND**

- 3/4" x 30" rebar set flush
- ⊙ 1/2" iron pipe w/alum. cap found
- ⊥ white vinyl sign post set

The bearings are Langlade County Coordinate system grid bearings ±20".



○ = corner perpetuated

The Southeast corner of Section 33, T. 33 N., R. 9 E., Langlade County, WI

Index No. Z13 33-09

I, David E. Tlusty, Registered Land Surveyor, as Langlade County Surveyor, certify that the corner location on this record was determined by me and that this U.S. Public Land Survey Monument Record is correct to the best of my knowledge and belief.