

U.S. PUBLIC LAND SURVEY MONUMENT RECORD

(Prepared and as required by S. A-E 7.08 WI Administrative Code)

The South 1/4 corner of Section 32, T. 33 N., R. 9 E., Langlade County, WI

Corner was: (check all that apply)

- Restored through acceptance of an obliterated evidence location.
- Restored through acceptance of a found perpetuated location.
- Determined to be lost and re-established through proportionate methods.
(Show bearings and distances to PLSS corners used for proportioning.)
- Restored/recovered/reestablished in a location that differs from a previously established position. (Show difference in plan view below.)
- Check here if additional information is shown on the reverse side of this form.

3309320020

Describe record evidence, recovered physical evidence, occupational evidence, testimonial evidence and all other evidence considered in the recovery/restoration of the corner.

The original corner was established in 1859 by Hiram C. Fellows. Original bearing trees: fir, 7", N48°E, 4 lks. and a lind, 8", S03°W, 11 lks. In 1981, former surveyor Kelly described the corner as: "Iron bar (below surface) and 4" aluminum cap witness monument, found in place. Set PK nail over iron bar." He also said "Iron bar set by D. Hintz about 1936" and "Rhineland Paper set wit. mon. in 1950's". 06/18/97 David E. Tlusty, Brian Markowski found nail in road. Accepted as corner shown by Kelly, even though I find no records for the Hiniz or Rhineland Paper work to verify what Kelly talked about. Replaced nail with a 1" x 8" iron pipe with 2" aluminum cap.

Physical description of the monument set:

See above.

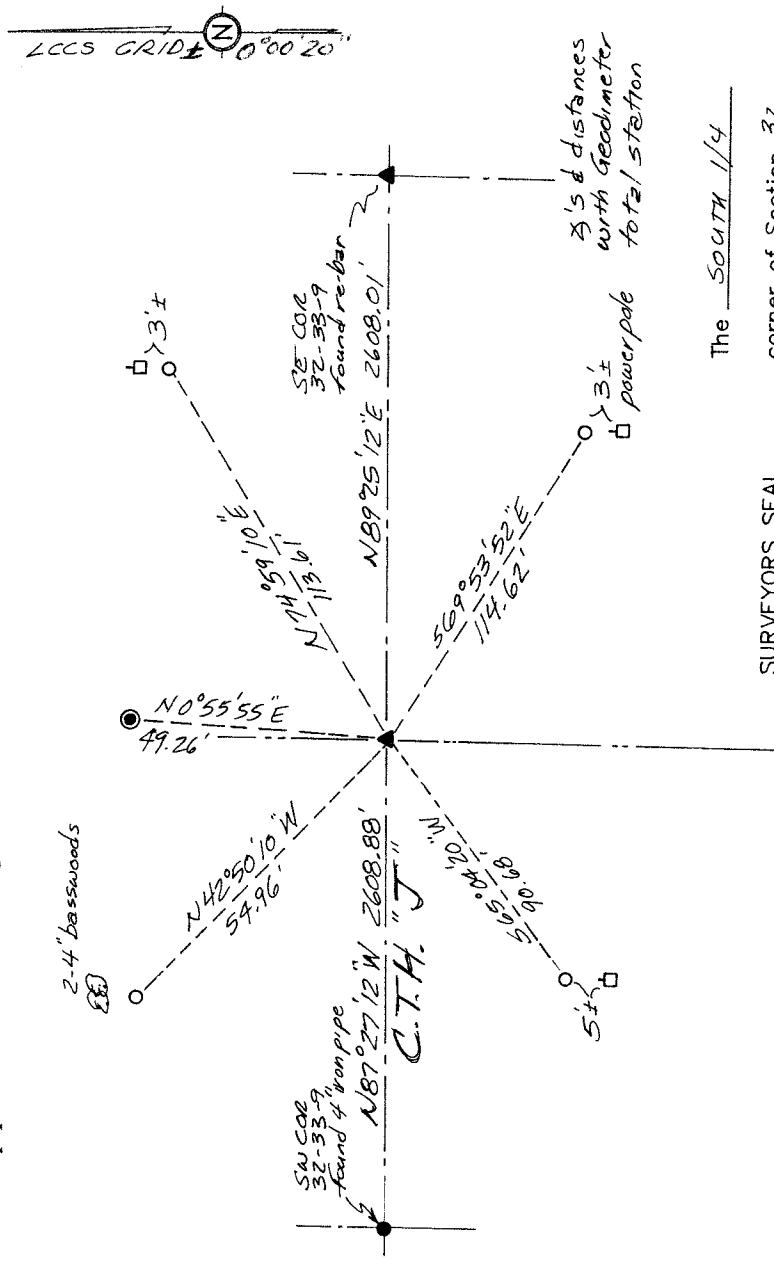
Describe the accessories used to perpetuate the location of the corner. Include a plan view drawing and indicate accessories found/set. Describe measuring point on bearing trees. Show any topographic features that would aid in future recovery of the corner.

○ = 3/4" x 30" rebar with red plastic cap set flush with ground.

= white vinyl sign post set

● = found 1 1/2" iron pipe with aluminum cap witness

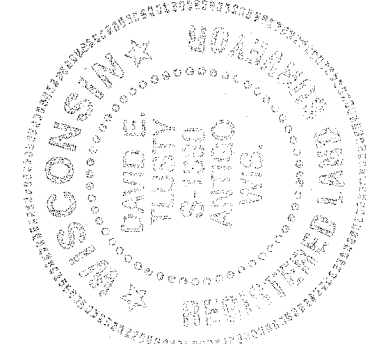
Notes FB14-56



SURVEYORS SEAL

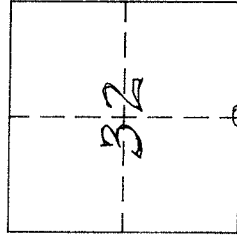
The South 1/4 corner of Section 32

T. 33 N., R. 9 E. Langlade County, WI



I, DAVID E. TLUSTY, LANGLADE COUNTY, 5406409, certify that the corner location shown on this record was determined by me or under my direction and control and that this U.S. Public Land Survey Monument Record is correct and complete to the best of my knowledge and belief.

David E. Tlusty 2/17/05
Signature Date



○ = Location of corner

INDEX No. 27 33-9