

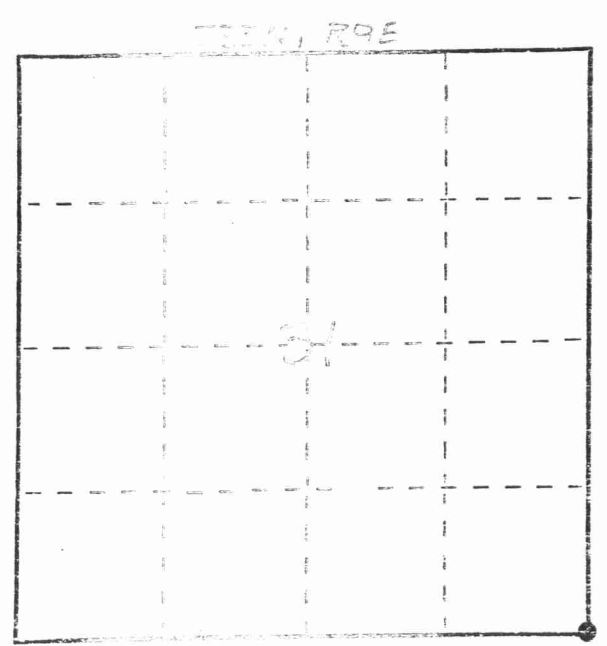
CERTIFIED LAND CORNER RESTORATION

Index No. 01-5

State of Wisconsin }
 County of LANGLADE } ss.

I WILLIAM F. KELLY, do hereby certify that on the 9th day of DEC., 1981, I found evidence of the SE corner of SEC. 31 Township 33, North, Range 9 EAST, Fourth Principal Meridian, as described hereon; and that from this evidence I established a new monument and accessories as described hereon to perpetuate the original location of this corner.

Resident witnesses:

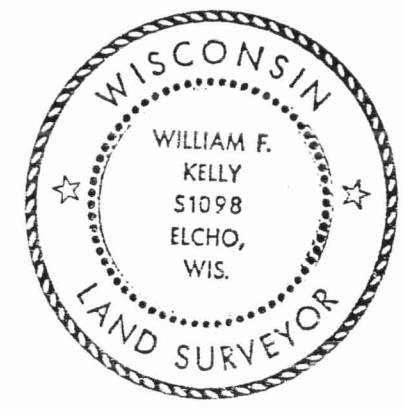


○ = Corner monument restored.

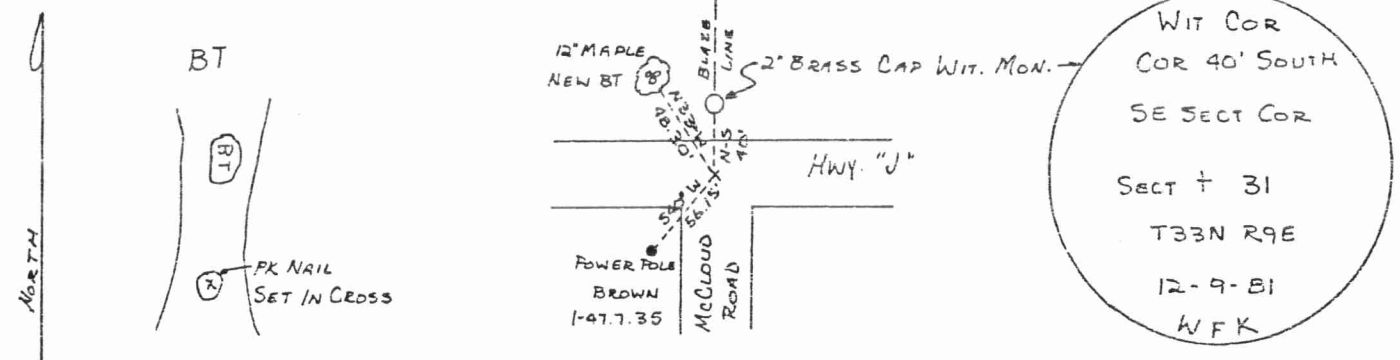
History of original corner establishment:
 ORIGINAL CORNER ESTABLISHED BY
 HIRAM C. FELLOWS IN SEPT. OCT., 1860.

IRON BAR SET BY D. HINTZ
 ABOUT 1936

Description of corner evidence found:
 IRON BAR (BELOW SURFACE) FOUND IN PLACE.
 SET PK NAIL OVER IRON BAR. SET A 2" x 92"
 BLACK IRON PIPE WITH BRASS CAP WITNESS
 MONUMENT. MARKED NEW
 BEARING TREE



Description of monument and accessories I established to perpetuate the original location of this corner.



Dated at ELCHO, Wis., this 9th day of DEC., 1981.

Signature William F. Kelly Title COUNTY SURVEYOR Registration No. 1098
 (County Surveyor, Registered Land Surveyor, or other duly authorized official)

Office of Register of Deeds, County of _____, I hereby certify that the within instrument was filed in this office for record on the _____ day of _____, 19____ at _____ o'clock _____ M.

 (Register of Deeds)
 By _____ Deputy

FORM 985 H. C. MILLER CO., MILWAUKEE