

CERTIFIED LAND CORNER RESTORATION

Index No. 5-2

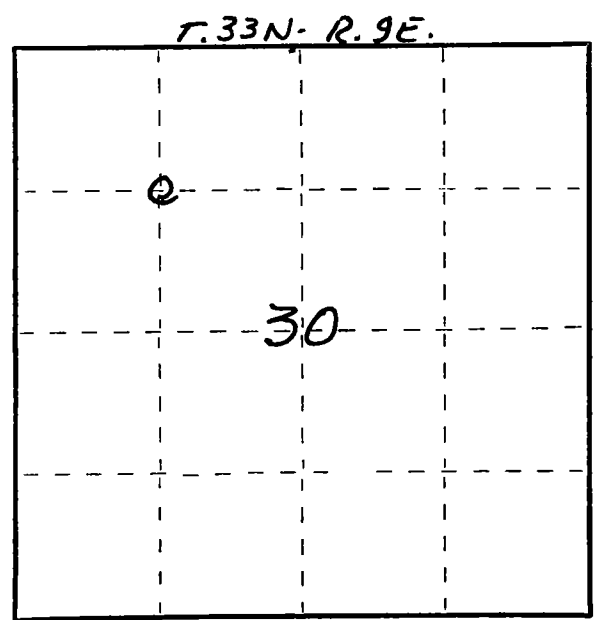
State of Wisconsin }
County of LANGLADE } ss.

I WILLIAM F. KELLY, do hereby certify that on the 16TH day of SEPTEMBER, 1977, I found evidence of the NW 1/16 corner of SECTION 30 Township 33, North, Range 9E, Fourth Principal Meridian, as described hereon; and that from this evidence I established a new monument and accessories as described hereon to perpetuate the original location of this corner.

Resident witnesses:

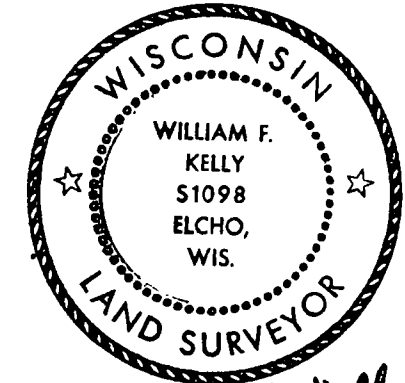
.....
.....
.....

FORM 985 H. C. MILLER CO., MILWAUKEE



○ = Corner monument restored.

History of original corner establishment:

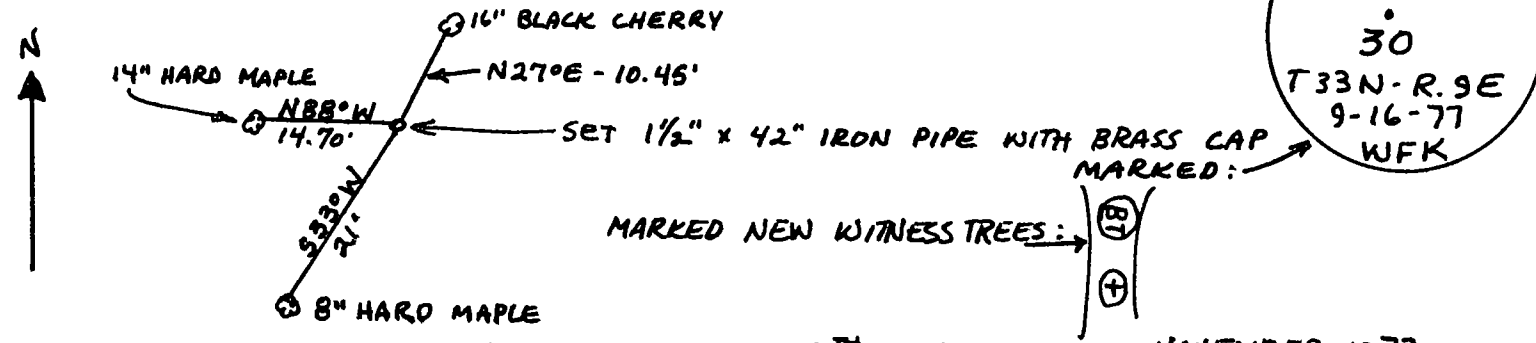


William F. Kelly 9-16-77

Description of corner evidence found:

ESTABLISHED THE NW 1/16 COR OF SECTION 30 T. 33N. - R. 9E. FROM CONTROL SURVEY RETRACEMENT OF SECTION 30 FROM ORIGINAL RECORDS AND MONUMENTS FOUND IN PLACE AT THE SECTION CORNERS.

Description of monument and accessories I established to perpetuate the original location of this corner.



Dated at ELCHO, Wis., this 16TH day of NOVEMBER, 1977.

Signature William F. Kelly Title REGISTERED LAND SURVEYOR Registration No. 51098
(County Surveyor, Registered Land Surveyor, or other duly authorized official)

Office of Register of Deeds, County of, I hereby certify that the within instrument was filed in this office for record on the day of, 19..... at o'clock M.

.....
(Register of Deeds)

By..... Deputy