

CERTIFIED LAND CORNER RESTORATION

Index No. T-2

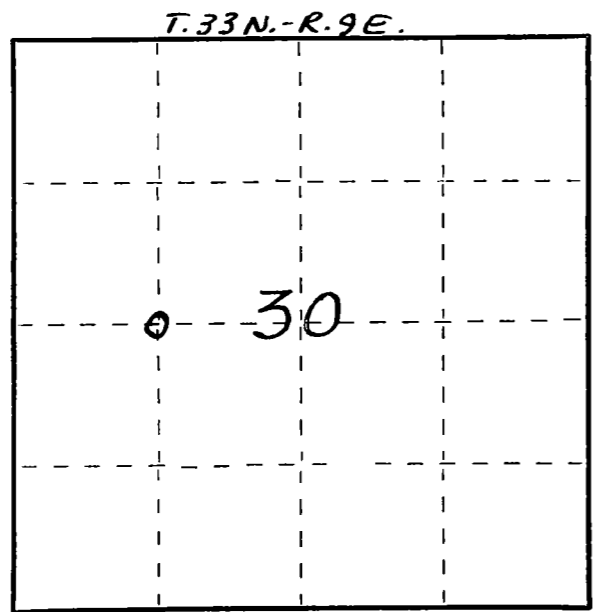
State of Wisconsin }
 County of LANGLISHE } ss.

I WILLIAM F. KELLY, do hereby certify that on the 10TH day of SEPTEMBER, 19 77, I found evidence of the W 1/8 corner of SECTION, 30 Township 33, North, Range 9E, Fourth Principal Meridian, as described hereon; and that from this evidence I established a new monument and accessories as described hereon to perpetuate the original location of this corner.

Resident witnesses:

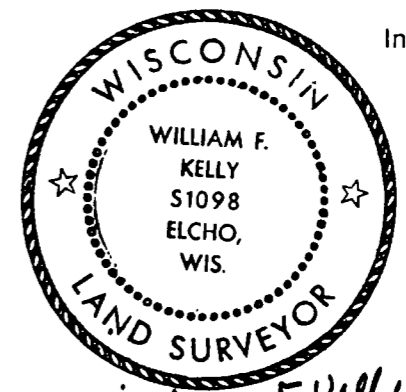
.....

FORM 985 H. C. MILLER CO., MILWAUKEE



○ = Corner monument restored.

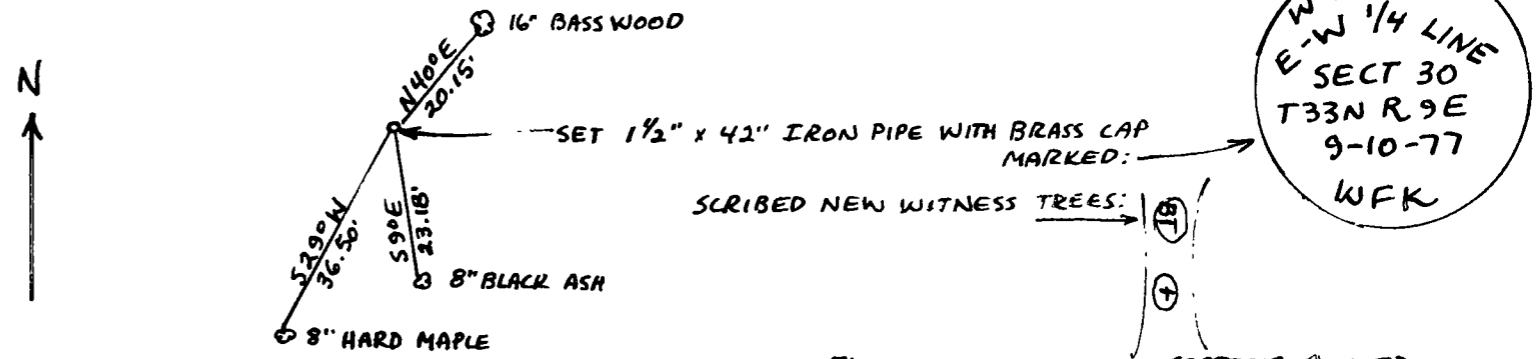
History of original corner establishment:



William F. Kelly 9-10-77

Description of corner evidence found:
 ESTABLISHED THE W 1/8 CORNER ON THE E-W 1/4 LINE SECTION 30 T. 33 N. R. 9 E. FROM CONTROL SURVEY RETRACEMENT OF SECTION 30 FROM ORIGINAL RECORDS AND MONUMENTS FOUND IN PLACE AT THE SECTION CORNERS.

Description of monument and accessories I established to perpetuate the original location of this corner.



W 1/8 COR
 E-W 1/4 LINE
 SECT 30
 T33N R 9E
 9-10-77
 WFK

Dated at ELCHO, Wis., this 10TH day of SEPTEMBER, 1977

Signature: William F. Kelly Title REGISTERED LAND SURVEYOR Registration No. S1098
 (County Surveyor, Registered Land Surveyor, or other duly authorized official)

Office of Register of Deeds, County of _____, I hereby certify that the within instrument was filed in this office for record on the _____ day of _____, 19 _____ at _____ o'clock _____ M.

.....
 (Register of Deeds)
 By..... Deputy