

CERTIFIED LAND CORNER RESTORATION

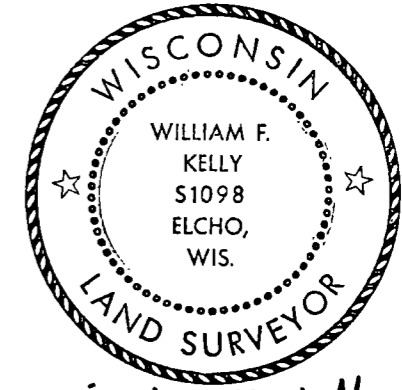
Index No. T-3

State of Wisconsin }
County of LAKELAND } ss.

History of original corner establishment:

I WILLIAM F. KELLY, do hereby certify that on the 28TH day of SEPTEMBER, 1977, I found evidence of the CENTER SECTION corner of SECTION 30 Township 33, North, Range 9E, Fourth Principal Meridian, as described hereon; and that from this evidence I established a new monument and accessories as described hereon to perpetuate the original location of this corner.

Description of corner evidence found:
LOCATED I.P. FROM O-I SURVEY

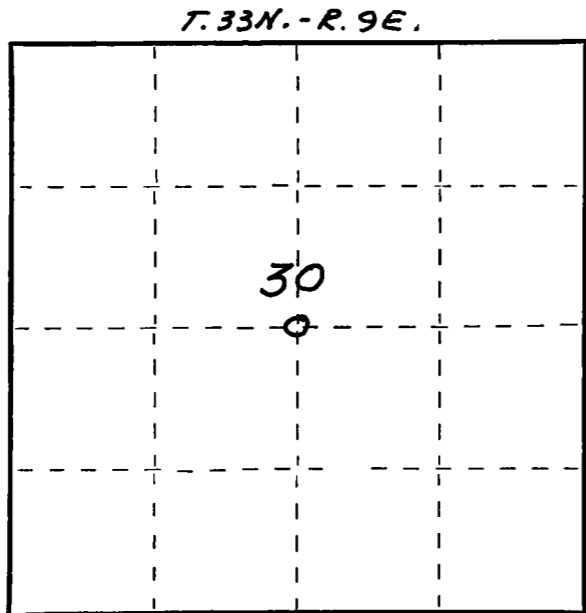


William F. Kelly

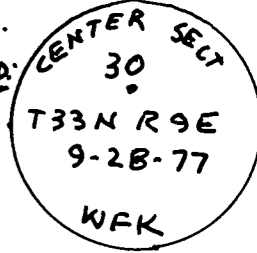
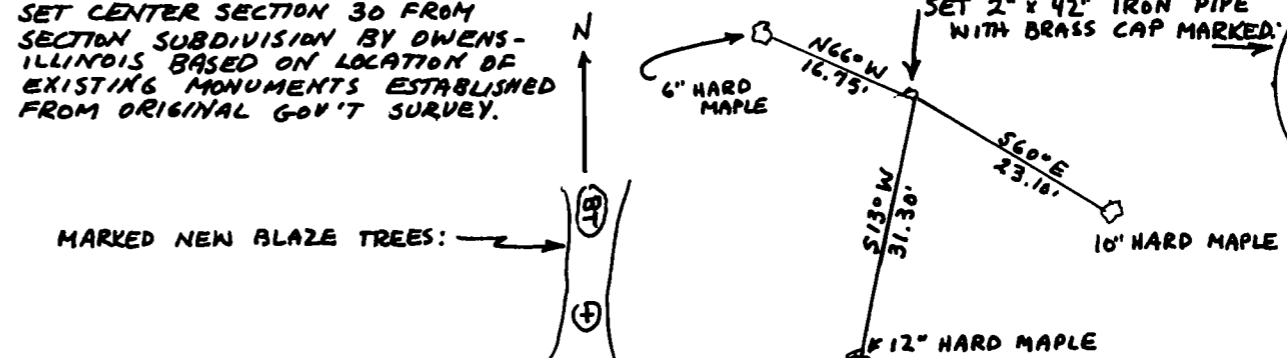
Resident witnesses:

.....
.....
.....

Description of monument and accessories I established to perpetuate the original location of this corner.
SET CENTER SECTION 30 FROM SECTION SUBDIVISION BY OWENS-ILLINOIS BASED ON LOCATION OF EXISTING MONUMENTS ESTABLISHED FROM ORIGINAL GOV'T SURVEY.



○ = Corner monument restored.



Dated at ELCHO, Wis., this 28TH day of SEPTEMBER 1977.

Signature William F. Kelly Title REGISTERED LAND SURVEYOR Registration No. 51098
(County Surveyor, Registered Land Surveyor, or other duly authorized official)

Office of Register of Deeds, County of, I hereby certify that the within instrument was filed in this office for record on the day of, 19..... at o'clock..... M.

.....
(Register of Deeds)
By Deputy

FORM 985 H. C. MILLER CO., MILWAUKEE