

CERTIFIED LAND CORNER RESTORATION

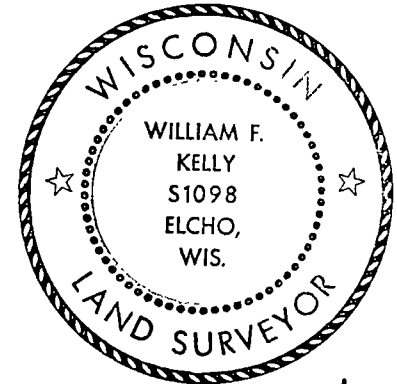
Index No. T-5

State of Wisconsin }
County of LAKGLADE } ss.

History of original corner establishment:

I WILLIAM F. KELLY, do hereby certify that on the 23rd day of SEPTEMBER, 1977, I found evidence of the 1/4 SECTION corner of SECTIONS 30 & 29 Township 33 North, Range 9E, Fourth Principal Meridian, as described hereon; and that from this evidence I established a new monument and accessories as described hereon to perpetuate the original location of this corner.

Description of corner evidence found:

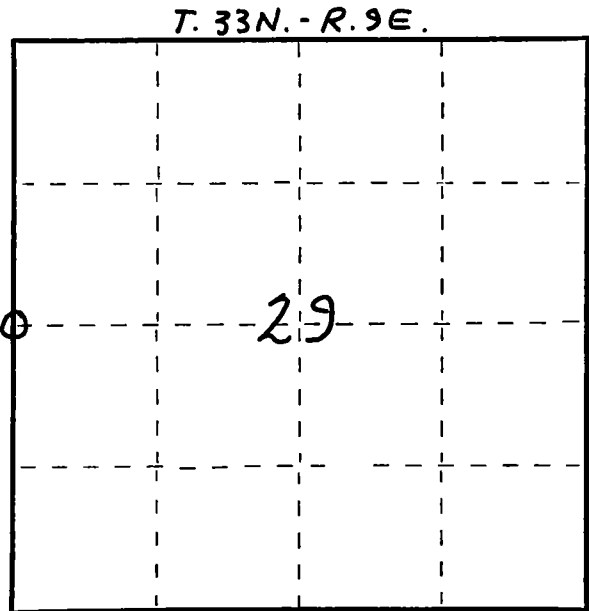
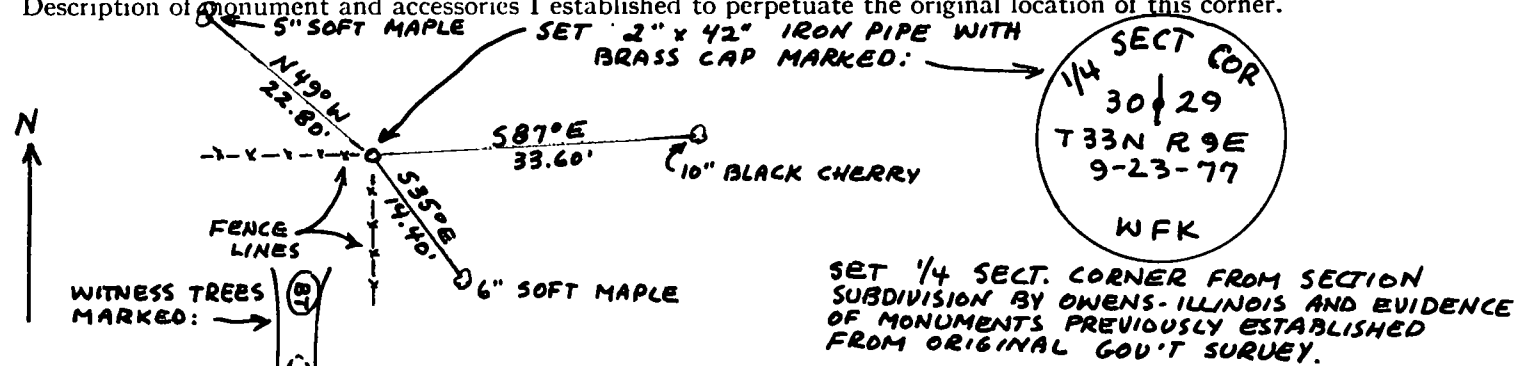


Handwritten signature: William F. Kelly

Resident witnesses:

Blank lines for resident witnesses.

Description of monument and accessories I established to perpetuate the original location of this corner.



Circle with cross symbol = Corner monument restored.

Dated at ELCHO, Wis., this 23rd day of SEPTEMBER, 1977.

Signature: William F. Kelly, Title REGISTERED LAND SURVEYOR, Registration No. 51098.

Office of Register of Deeds, County of ... I hereby certify that the within instrument was filed in this office for record on the ... day of ... 19... at ... o'clock ... M.

(Register of Deeds)

By ... Deputy