

CERTIFIED LAND CORNER RESTORATION

Index No. EA-7

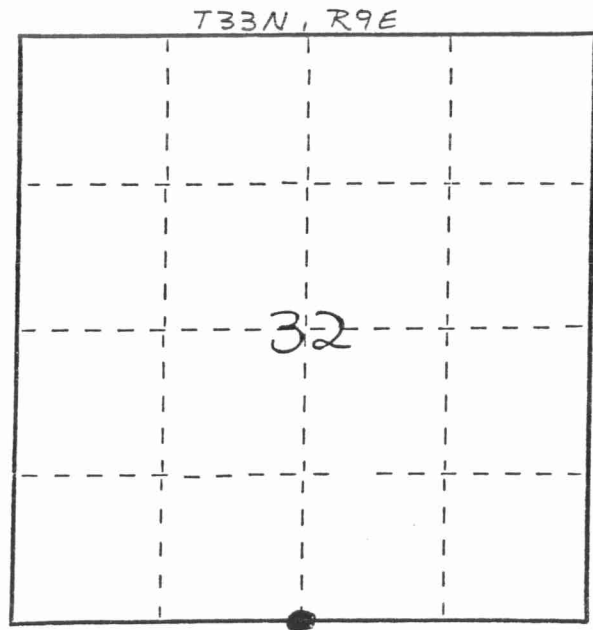
T32N-R9E

State of Wisconsin }
County of LANGLADE } ss.

I WILLIAM F. KELLY, do hereby certify that on the 9th day of DEC., 1981, I found evidence of the 54 corner of SEC. 32 Township 33, North, Range 9 EAST, Fourth Principal Meridian, as described hereon; and that from this evidence I established a new monument and accessories as described hereon to perpetuate the original location of this corner.

Resident witnesses:

.....
.....
.....



○ = Corner monument restored.

History of original corner establishment:

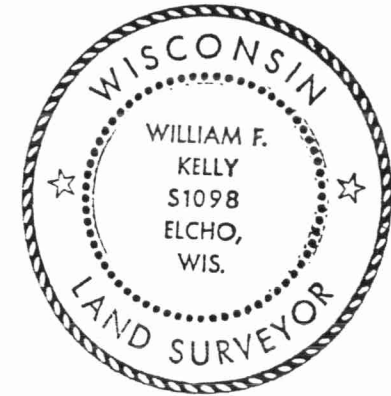
ORIGINAL CORNER ESTABLISHED BY
HIRAM C. FELLOWS IN SEPT., 1860.

IRON BAR SET BY D. HINTZ
ABOUT 1836

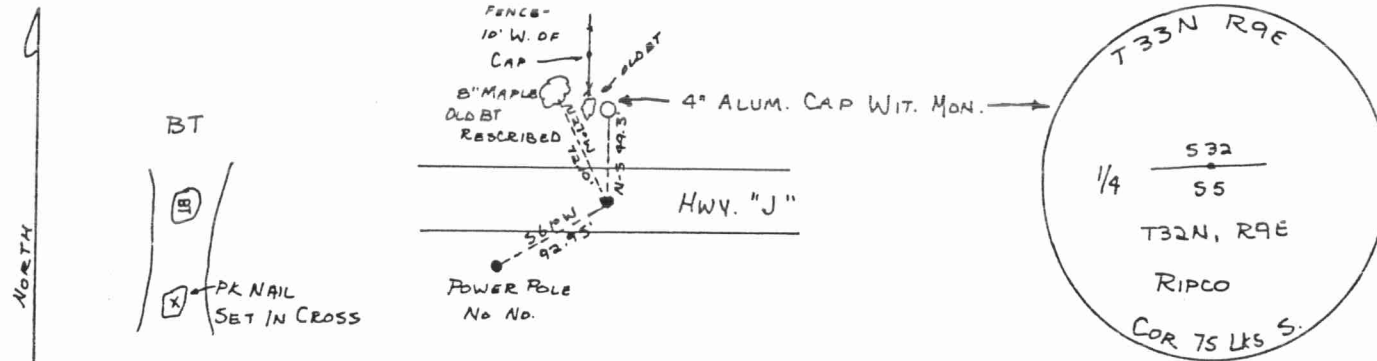
RHINELANDER PAPER SET WIT. MON.
IN 1950'S

Description of corner evidence found:

IRON BAR (BELOW SURFACE) AND
4" ALUMINUM CAP WITNESS MONUMENT,
FOUND IN PLACE. SET PK NAIL
OVER IRON BAR.



Description of monument and accessories I established to perpetuate the original location of this corner.



Dated at ELCHO, Wis., this 9th day of DEC., 1981.

Signature William F. Kelly Title COUNTY SURVEYOR Registration No. 1098
(County Surveyor, Registered Land Surveyor, or other duly authorized official)

Office of Register of Deeds, County of _____, I hereby certify that the within instrument was filed in this office for record on the _____ day of _____, 19____ at _____ o'clock _____ M.

.....
(Register of Deeds)

By..... Deputy

FORM 985 H. C. MILLER CO., MILWAUKEE