

CERTIFIED LAND CORNER RESTORATION

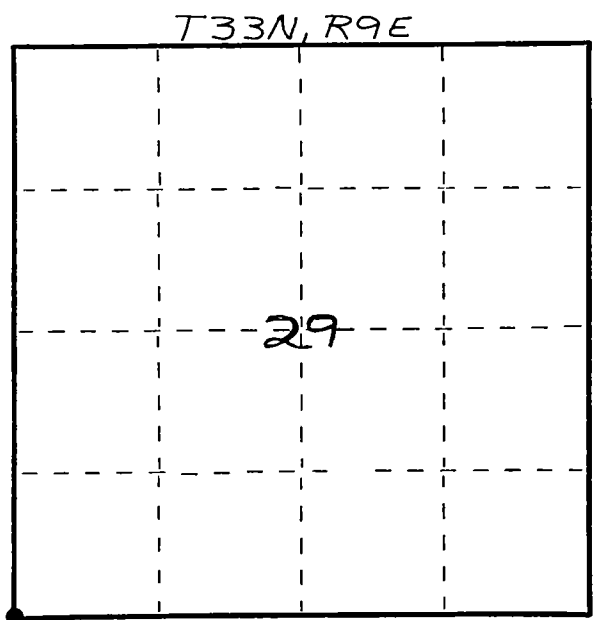
Index No. V-5

State of Wisconsin }
 County of LANGLADE } ss.

I WILLIAM F. KELLY, do hereby certify that on the 3RD day of Dec., 1981, I found evidence of the SW corner of SECT. 29 Township 33, North, Range 9 EAST, Fourth Principal Meridian, as described hereon; and that from this evidence I established a new monument and accessories as described hereon to perpetuate the original location of this corner.

Resident witnesses:

FORM 985 M. C. MILLER CO., MILWAUKEE



○ = Corner monument restored.

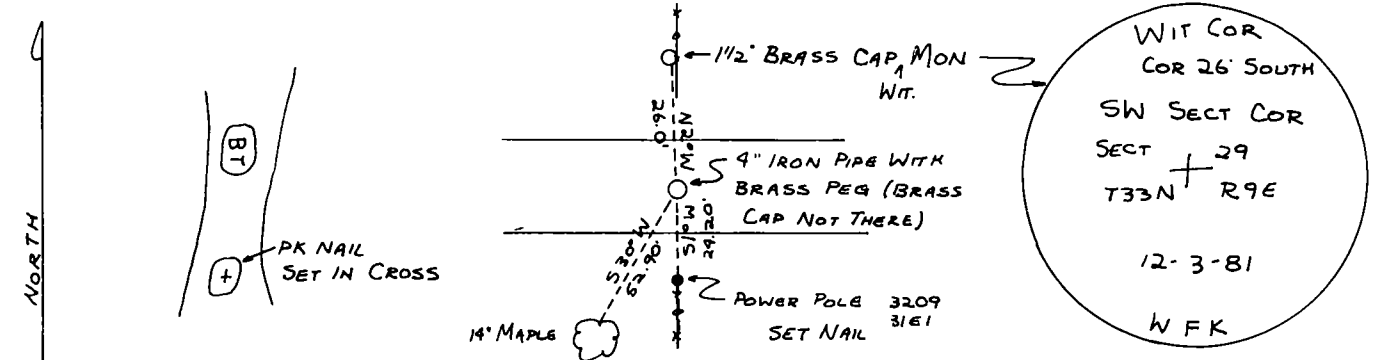
History of original corner establishment:
ORIGINAL CORNER ESTABLISHED BY
HIRAM C FELLOWS IN SEPT-OCT., 1860.

RE-SURVEY of Twp. in 1930's
EST. LOCATION of corner.

Description of corner evidence found:
4" IRON PIPE WITH BRASS PEG,
(BRASS CAP IS GONE) FOUND
IN PLACE. SET A 1 1/2' x 42'
BLACK IRON PIPE WITH BRASS
CAP WITNESS MONUMENT.



Description of monument and accessories I established to perpetuate the original location of this corner.



Dated at ELCHO, Wis., this 3RD day of Dec., 1981.

Signature William F. Kelly Title COUNTY SURVEYOR Registration No. 1098
 (County Surveyor, Registered Land Surveyor, or other duly authorized official)

Office of Register of Deeds, County of _____, I hereby certify that the within instrument was filed in this office for record on the _____ day of _____, 19____ at _____ o'clock _____ M.

(Register of Deeds)

By _____ Deputy