

U.S. PUBLIC LAND SURVEY MONUMENT RECORD

(Prepared and as required by S. A-E 708 WI Administrative Code)

The NW corner of Section 33, T. 33 N., R. 9 E., Langlade County, WI

43309290000

Corner was: (check all that apply)

- Restored through acceptance of an obliterated evidence location.
- Restored through acceptance of a found perpetuated location.
- Determined to be lost and re-established through proportionate methods.
(Show bearings and distances to PLSS corners used for proportioning.)
- Restored/recovered/reestablished in a location that differs from a previously established position. (Show difference in plan view below.)
- Check here if additional information is shown on the reverse side of this form.

Describe record evidence, recovered physical evidence, occupational evidence, testimonial evidence and all other evidence considered in the recovery/restoration of the corner.

ORIGINAL CORNER SET OCTOBER 1860 BY HIRAM C. FELLOWS

ORIGINAL BTS: BIRCH 10" S45°W 18LKS, BIRCH 25" N73°E 25LKS.

JUNE 24, 1936 CLYDE H. PARKER FOUND 1 BT, NOTIES FROM PREVIOUS SURVEYS AVAILABLE.

RELIABLE INFORMATION FROM THE TOWN CLERK SHOWS THIS CORNER WAS AT THE CENTERLINE OF THE ROAD AND ON THE FENCE LINE BUT THE STAKE WAS REMOVED WHEN THE LINE ROAD WAS BUILT. A THOROUGH SEARCH WAS MADE, INVOLVING DIGGING ACROSS THE ROAD A STRIP ABOUT 4' WIDE AND 3' DEEP, BUT NO EVIDENCE OF ANY CORNER MARKER COULD BE FOUND.

PLACED THIS CORNER ON CENTERLINE OF ROAD AND OLD FENCE LINE, MARKING IT WITH A STANDARD 4" CONCRETE FILLED I.P. WITH BRASS CAP.

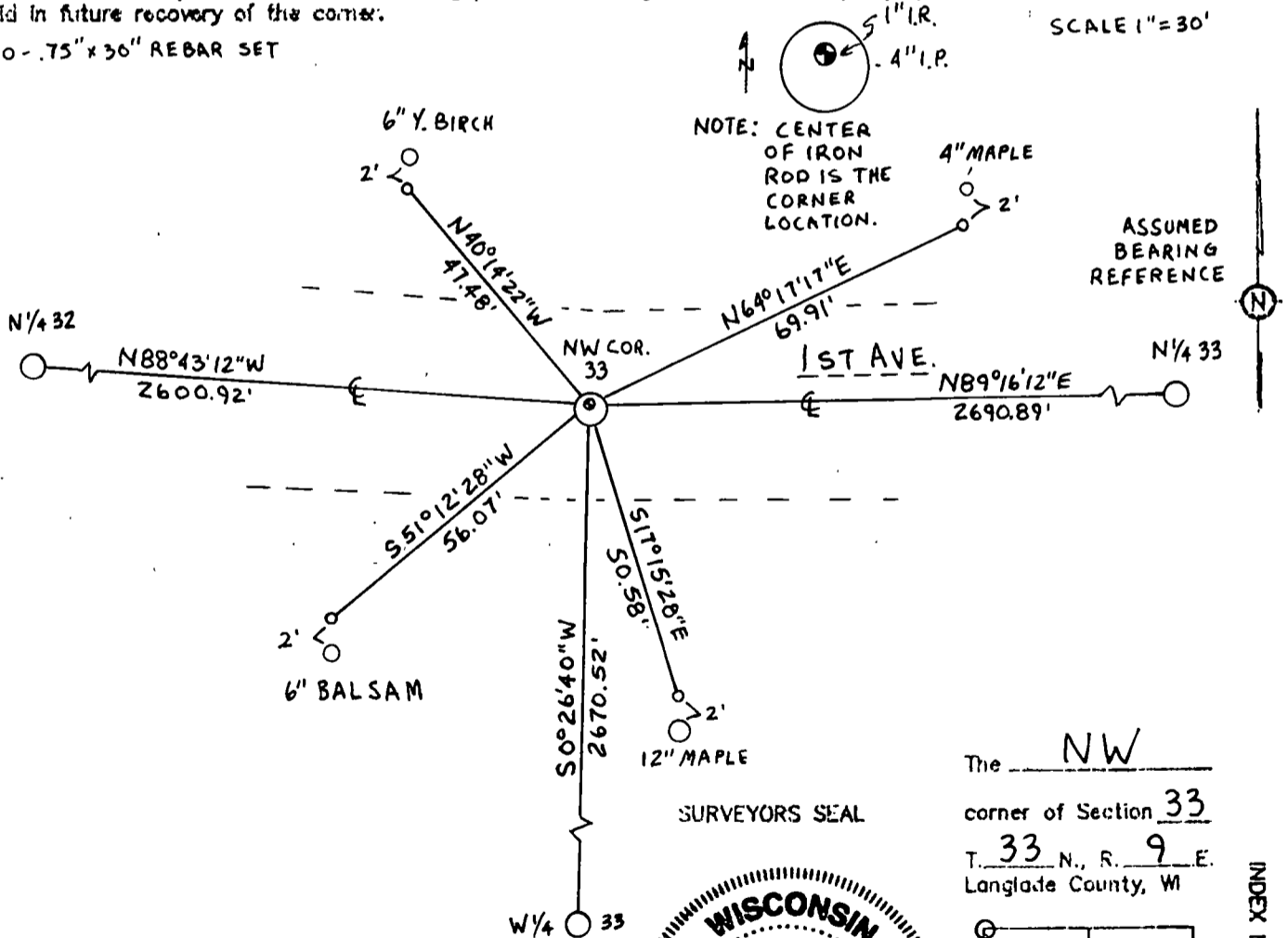
AUGUST 5, 2003 DEAN A. WILLIAMS FOUND 4" CONC. FILLED IP WITHOUT BRASS CAP IN SOUTH DITCH KNOCKED OUT BY GRADER. RESET MON. AT E RD AND OLD FENCE LINE NORTH.

Physical description of the monument set:

SET 4" x 36" CONCRETE FILLED IRON PIPE WITH 1" ROUNDED IRON ROD OFF CENTER PROTRUDING 1" FROM TOP. SET .8' BELOW GRAVEL ROAD SURFACE.

Describe the accessories used to perpetuate the location of the corner. Include a plan view drawing and indicate accessories found/set. Describe measuring point on bearing trees. Show any topographic features that would aid in future recovery of the corner.

o - .75" x 36" REBAR SET

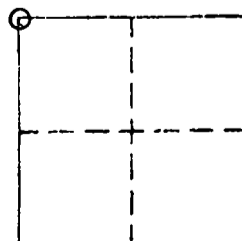


I, DEAN A. WILLIAMS RLS-2468, certify that the corner location shown on this record was determined by me or under my direction and control and that this U.S. Public Land Survey Monument Record is correct and complete to the best of my knowledge and belief.

Dean Williams 10/13/03
Signature Date



The NW corner of Section 33, T. 33 N., R. 9 E., Langlade County, WI



INDEX No.

19