

CERTIFIED LAND CORNER RESTORATION

Index No. P-21  
33-9

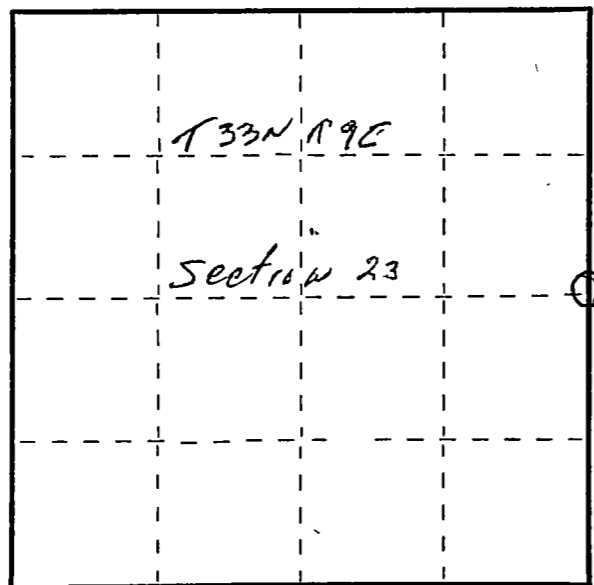
State of Wisconsin }  
County of Langlade } ss.

I Raymond J. Hallisy, do hereby  
certify that on the 7th day  
of April, 1979, I found  
evidence of the 1/4  
corner of Section 23 & 24  
Township 33, North, Range  
9E, Fourth Principal Meridian,  
as described hereon; and that from this evidence  
I established a new monument and accessories  
as described hereon to perpetuate the original  
location of this corner.

Resident witnesses:

.....  
.....  
.....

FORM 985 H. C. MILLER CO., MILWAUKEE



○ = Corner monument restored.

History of original corner establishment:

Corner set in the 1930 resurvey.

Description of corner evidence found:

4" pipe with brass cap

BT'S

14" Elm N80E 18' 6"

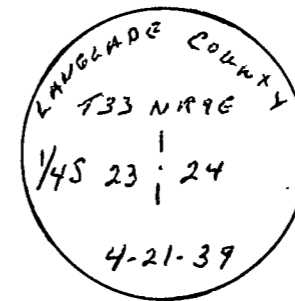
24" Elm S76W 45' 7"

Description of monument and accessories I established to perpetuate the original location of this corner.

New BT's

8" Balsam S50E 19' 6"

3" Balsam S76W 10' 6"



Dated at Antigo, Wis., this 7th day of April, 1979.

Signature Raymond J. Hallisy Title Reg. Land Surveyor Registration No. S-685  
(County Surveyor, Registered Land Surveyor, or other duly authorized official)

Office of Register of Deeds, County of \_\_\_\_\_, I hereby certify that the within  
instrument was filed in this office for record on the \_\_\_\_\_ day of \_\_\_\_\_, 19\_\_\_\_  
at \_\_\_\_\_ o'clock \_\_\_\_\_ M.

.....  
(Register of Deeds)

By \_\_\_\_\_ Deputy