

## U.S. PUBLIC LAND SURVEY MONUMENT RECORD

Instructions: This record shall show the location of the corner and shall include all of the following nine elements (a through i).

(a) Identify the corner by reference to the U.S. public land survey system.

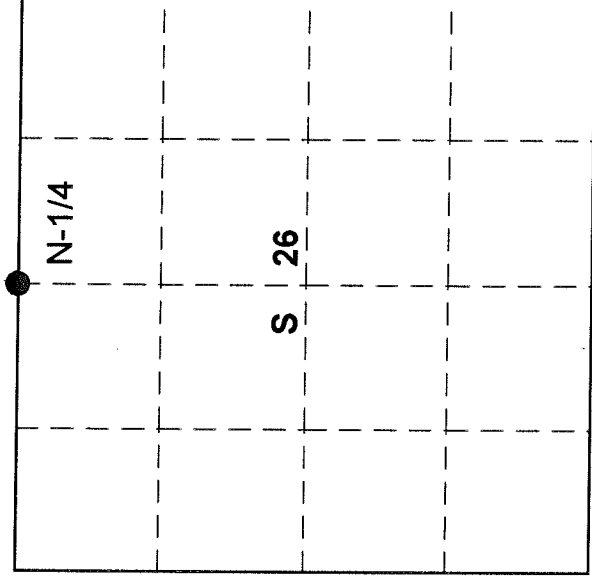
○ = Corner monument restored.

N-1/4 Corner

Sec. 26, T 33 N, R 9 E

Type of Monument:

1-3/4" iron pipe with 4" bras cap



## Langlade COUNTY

(b) Describe any record evidence, monument evidence, occupational evidence, testimonial evidence or any other material evidence you considered, and whether the monument was found or placed.

Original corner established in 1860 by Hiram C. Fellows, Gov't Deputy Surveyor from which 15" Birch bears S23°E 37 lks and Sugar 15" bears N31°W 32 lks

In 1936 Clyde H. Parker notes the Quarter corner was completely obliterated and no bearing trees could be found. He ran between the NE section corner and the NW section corner for a total distance of 5321.60' Set 1/4 corner half way between the two section corners and in the center line of bend in road. 2660.80' of the section corners.

No evidence of Parkers corner, road work and timber harvesting has obliterated the area.

Resurvey of the same we have a total distance of 5317.24'. Reestablished 1/4 corner on a proportional Measurement and in the center line of bend in road, 2658.62' of the section corners

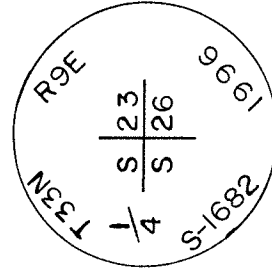
(c) In the plan view drawing below, provide reference ties to at least 4 witness monuments, or, if the location is within a municipality, to at least 2 witness monuments. (Witness monuments shall be made of concrete, natural stone, iron or other equally durable material).

Describe witness monuments:

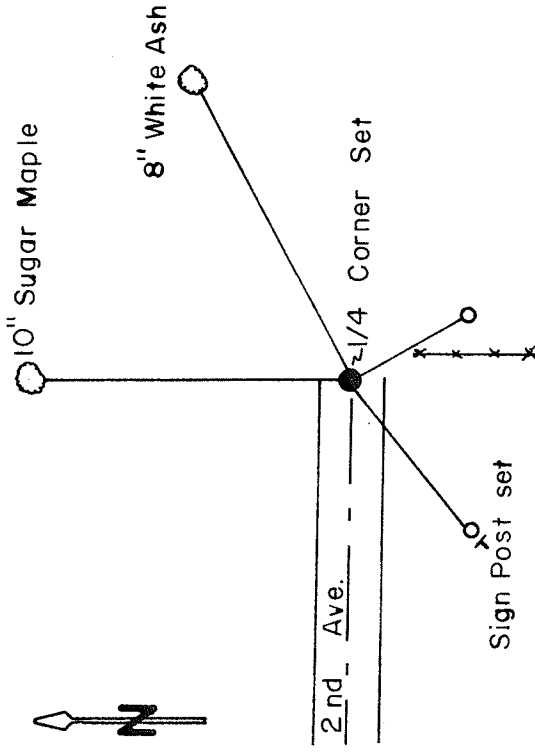
Marked new B.Ts 10" sugar- North 68.27'  
8" Twin white ash- N62°E 71.12'

(d) Show a plan view drawing depicting the relevant monuments and reference ties which is sufficient in detail to enable accurate relocation of the corner monument if the corner monument is disturbed. Indicate north.

Monument Set



6" below road surface



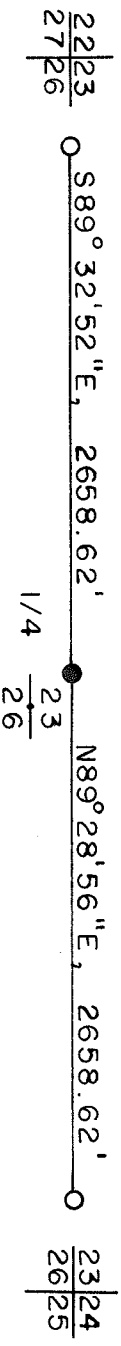
Set two 3/4" rebars for witness monuments  
S50°44' 34"W/39.55' ----- S28°47' 01"E, 28.10'

(e) Describe an material discrepancy between the location of the corner as restored or reestablished and the location of that corner as previously restored or reestablished by distance and direction. Show the discrepancy on the plan view drawing under (d), above. Show the distances between the corner as previously restored or reestablished and (1) the corner as restored or reestablished, and (2) to at least 2 of the witness monuments shown on the drawing in (d), above.

(f) Was the corner restored through acceptance of (1) an obliterated evidence location, or, (2) a found perpetuated location?

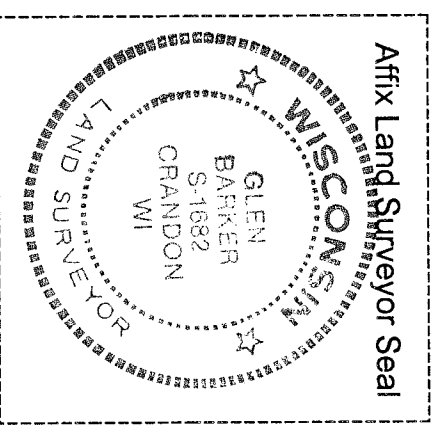
(g&h) Was the corner reestablished through lost corners proportionate methods? If so, show the method, including the directions and distances to other public land survey corners used as evidence or used for proportioning in determining the corner location?

Proportionate method



(i) I, Glen Barker  
 (type or print name) certify that the corner location shown on this record was determined by me or under my direction and control and that this U.S. Public Land Survey Monument is correct and complete to the best of my knowledge and belief.

Signature Glen Barker Date 9/12/96



26 SEC 33 TWN 9E R1G