

# U. S. PUBLIC LAND SURVEY MONUMENT RECORD

**INSTRUCTIONS:**

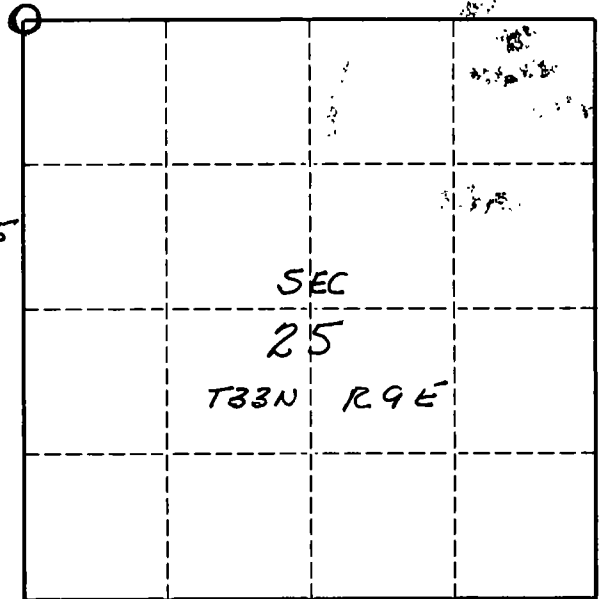
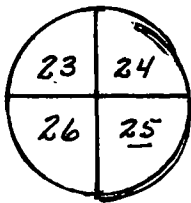
This record shall show the location of the corner and shall include all of the following nine elements (a through i).

(a) Identify the corner by reference to the U.S. public land survey system.

O = Corner monument restored.

LANGLADE COUNTY  
TOWN OF SUMMIT  
N.W. SECTION CORNER - SEC 25  
TOWN 33 N - R 9 E

MONUMENT  
4" BRASS CAP



(b) Describe any record evidence, monument evidence, occupational evidence, testimonial evidence or any other material evidence you considered, and whether the monument was found or placed.

- 1) CORNER SET IN 1930 COUNTY RESURVEY  
2 BEARING TREES
- 2) CORNER RECOVERED AND REMONUMENTED - 7 APRIL 1979  
2 ORIGINAL B. TREES + 2 NEW B. TREES
- 3) 7 APRIL 1994 - CORNER TIPPED AND BURIED FROM ROAD WORK. ORIGINAL ELM BT HOST (ROAD WORK). RESET; DUG OUT CORNER. - TREES BLAZED "B.T" - ADDED COUNTY B.T PLAQUES

(c) In the plan view drawing below, provide reference ties to at least 4 witness monuments, or, if the location is within a municipality, to at least 2 witness monuments. (Witness monuments shall be made of concrete, natural stone, iron or other equally durable material.)

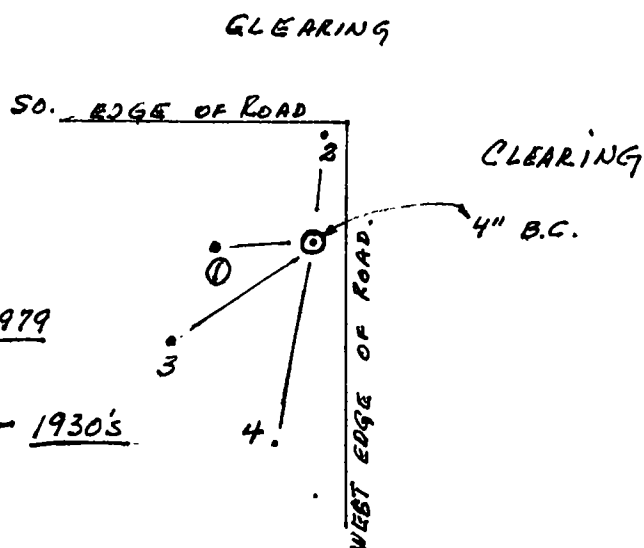
Describe witness monuments.

4 - BEARING TREES + COUNTY "BT" PLAQUES.

(d) Show a plan view drawing depicting the relevant monuments and reference ties which is sufficient in detail to enable accurate relocation of the corner monument if the corner monument is disturbed. Indicate north.

BEARING TREES

- ① FIR - 10" - S88°W - 8.0' - 1979
- 2 RED MAPLE - 6" - N4E - 9' 11" - 1979
- 3 FIR - 8.7" - S54°W - 14.0' - 1994
- 4 - BASSWOOD - 14" - S12°W - 17' 1" - 1930's  
ORIGINAL



R21

Describe any material discrepancy between the location of the corner as restored or reestablished and the location of that corner as previously restored or reestablished by distance and direction. Show the discrepancy on the plan view drawing under (d), above. Show the distances between the corner as previously restored or reestablished and (1) the corner as restored or reestablished, and (2) to at least 2 of the witness monuments shown on the drawing in (d), above.

*N.A.*

(f) Was the corner restored through acceptance of (1) an obliterated evidence location, or, (2) a found perpetuated location?

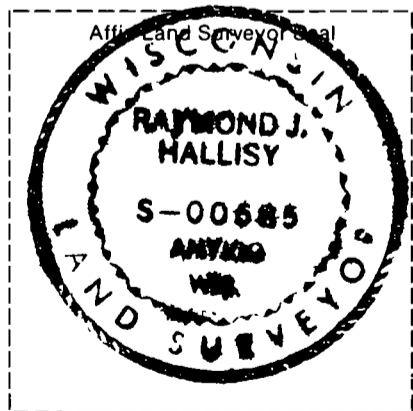
*N.A.*

(g & h) Was the corner reestablished through lost corner proportionate methods? If so, show the method, including the directions and distances to other public land survey corners used as evidence or used for proportioning in determining the corner location.

*N.A.*

(i) I, RAYMOND J. HALLISY  
(type or print name)

certify that the corner location shown on this record was determined by me or under my direction and control and that this U.S. Public Land Survey Monument Record is correct and complete to the best of my knowledge and belief.



*Raymond J. Hallisy*      4-11-94  
 Signature      Date



CERTIFIED LAND CORNER RESTORATION

Index No. R-21

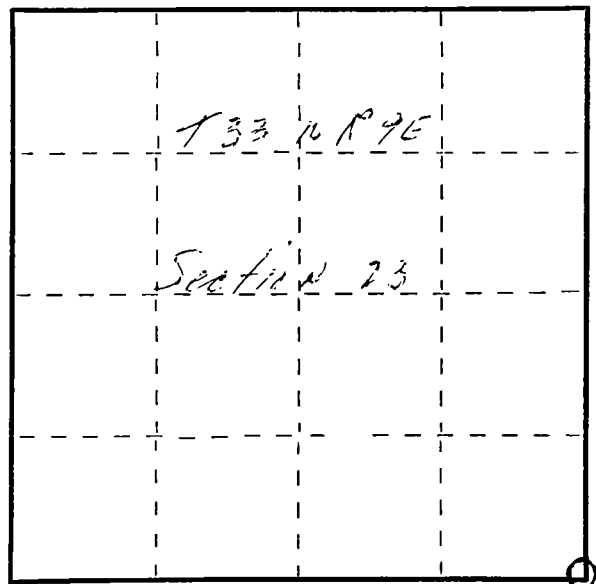
33-9

State of Wisconsin }  
County of Lancaster } ss.

I Raymond J. Hallisy, do hereby certify that on the 7th day of April, 19 79, I found evidence of the Section corner of 23, 24, 25 & 26 Township 33, North, Range 9E, Fourth Principal Meridian, as described hereon; and that from this evidence I established a new monument and accessories as described hereon to perpetuate the original location of this corner.

Resident witnesses:

.....  
.....  
.....



○ = Corner monument restored.

History of original corner establishment:

Corner set in the 1930 resurvey.

Description of corner evidence found:

4" pine with brass cap

BT's

14" Elm N40W 15'

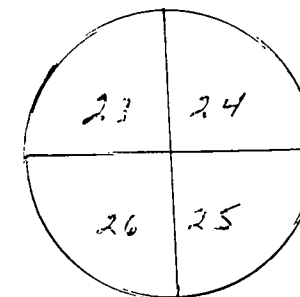
10 Basswood S12W 17' 1"

Description of monument and accessories I established to perpetuate the original location of this corner.

New BT's

10" Balsam S88W 8'

5" Red Maple N4E 9' 11"



Dated at Antigo, Wis., this 7th day of April, 19 79.

Signature Raymond J. Hallisy Title Reg. Surveyor Registration No. S-685  
(County Surveyor, Registered Land Surveyor, or other duly authorized official)

Office of Register of Deeds, County of Lancaster, I hereby certify that the within instrument was filed in this office for record on the 7th day of April, 19 79 at 10 o'clock AM.

.....  
(Register of Deeds)

By..... Deputy