

4330922 2000

U.S. PUBLIC LAND SURVEY MONUMENT RECORD

(Prepared and as required by S. A-E 7.08 WI Administrative Code)

The WEST 1/4 corner of Section 23, T. 33 N., R. 09 E., Langlade County, WI
Corner was (check all that apply)

- Restored through acceptance of an obliterated evidence location.
- Restored through acceptance of a found perpetuated location.
- Determined to be lost and re-established through proportionate methods.
(show bearings and distances to PLSS corners used for proportioning.)
- Restored/recovered/re-established in a location that differs from a previously established position. (Show difference in plan view below.)
- Check here if additional information is shown on the reverse side of this form.

Describe record evidence, recovered physical evidence, occupational evidence, testimonial evidence, and all other evidence considered in the recovery/restoration of the corner.

September 28, 1860 - Government Surveyor, H.C. Fellows set original corner post and marked bearing trees, Fir 6", S 8° W, 54 links, and Spruce 14", N 10° E, 299 links.
 1936 - GLO Re-survey, Parker references two bearing trees at 1/4 corner location, 8" Maple, 48.06 feet SW, and 5" Maple, 40.06 feet NW.

1961 - Surveyor Loftus, performing a resurvey of Section 23, referenced the West 1/4 corner as an "accepted corner."

2009 - I found a capped iron pipe tipped on its side. I stood the monument up and accepted as the 1/4 corner as the distances match well with both Parker (to the South) and Loftus (to the East). I found no evidence of any old bearing trees.

Physical description of the monument set:

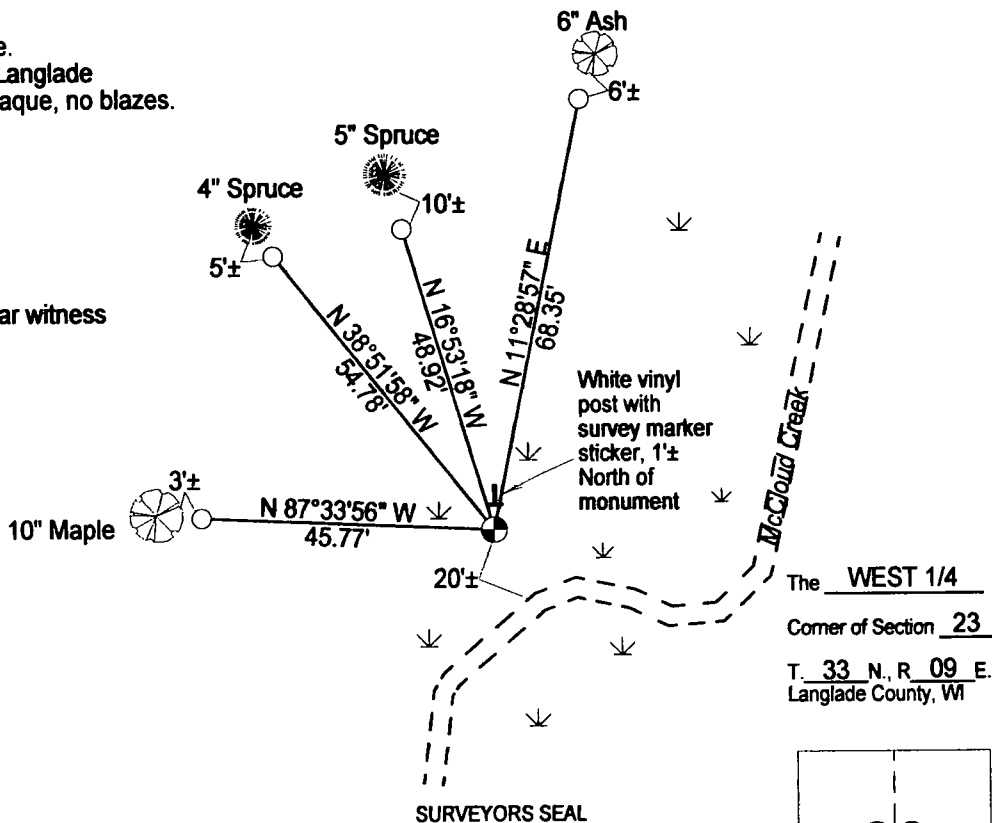
2009 - I reset the found capped iron pipe and tied it out as follows.

Describe the accessories used to perpetuate the location of the corner. Include a plan view drawing and indicate accessories found/set. Describe measuring point on bearing trees. Show any topographic features that would aid in future recovery of the corner.

Notes:

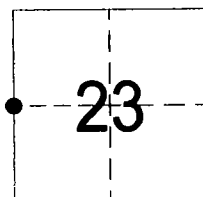
- Not drawn to any scale.
- All bearing trees with Langlade County bearing tree plaque, no blazes.

- Set 3/4" x 24" rebar witness
- Capped Iron Pipe



BEARINGS REFERENCED TO THE LANGLADE COUNTY COORDINATE SYSTEM GRID.

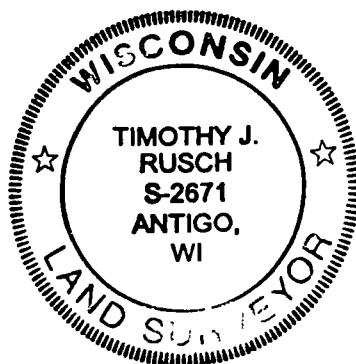
The WEST 1/4 Corner of Section 23 T. 33 N., R. 09 E. Langlade County, WI



● = Location of corner

I, Timothy J. Rusch, certify that the corner location shown on this record was determined by me or under my direction and control and that this U.S. Public Land Survey Monument Record is correct and complete to the best of my knowledge and belief.

Timothy J. Rusch Signature 09/25/2009 Date



INDEX NO.

P17 33-09