

LANGLADE COUNTY U.S. PUBLIC LAND CORNER RESTORATION

The East Quarter corner of Section 21, T. 33 N., R. 9 E., Langlade County, WI.

Corner was: (check all that apply)

- Restored through acceptance of an obliterated evidence location.
- Restored through acceptance of a found perpetuated location.
- Determined to be lost and re-established through proportionate methods.
 - Show bearings and distances to PLSS corners used for proportioning, and show original distances).
 - Restored/recovered/re-established in a location that differs from a previously established position.
- (Show difference in plan view below).
 - Check here if additional information is shown on the reverse side of this form.

43309212000

Describe record evidence, recovered physical evidence, occupational evidence, testimonial evidence and all other evidence considered in the recovery/restoration of the corner.

The original corner was established in 1860 by Hiram C. Fellows. Original bearing trees: sugar, 12", S28°E, 12 links and a ?, 8", N30°W, 5 links. In the 1936 resurvey of a portion of this township, C.H. Parker said "This 1/4 corner was marked with an 8" x 10" x 20" black granite rock in the centerline of county road "H". A cross was marked on the top of the stone". In 1981, former surveyor Kelly described the corner as "R.R. spike, found in place. Found 1 old BT, rescribed it. Set a 2" x 42" black iron pipe with brass cap witness monument". 07/21/04 Dave Tlusty, Jason Thom and Dave Meyer dug with backhoe. Down 2.5' below road surface found a black granite stone, 8" x 10" x 20", upright in roadbed, but no X was found. It being the same size called for in the 1936 resurvey, and being the only stone found at all, I accept it as the best evidence of the original corner location.

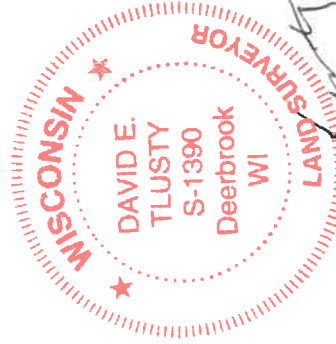
Physical description of the monument set:

Left existing stone in place and set a 3/4" x 30" rebar on the east edge of the stone found.

Describe the accessories used to perpetuate the corner. Include a plan view drawing and accessories found/set. Describe measuring point on bearing trees. Show any topographic features that would aid in future recovery of the corner.

- LEGEND**
- 3/4" x 30" rebar set flush
 - 3/4" iron pipe found unless noted otherwise

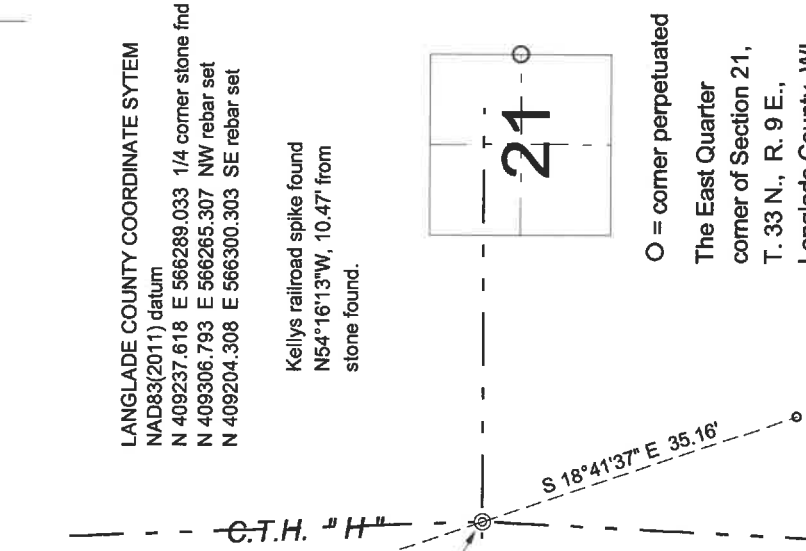
The bearings are Langlade County Coordinate system grid bearings.



PRELIMINARY

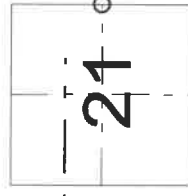
David E. Tlusty
7/3/19

E 1/4 corner, 21-33-09
Found stone.



LANGLADE COUNTY COORDINATE SYTEM
NAD83(2011) datum
N 409237.618 E 566289.033 1/4 corner stone fnd
N 409306.793 E 566265.307 NW rebar set
N 409204.308 E 566300.303 SE rebar set

Index No. P13 33-09



○ = corner perpetuated
The East Quarter corner of Section 21, T. 33 N., R. 9 E., Langlade County, WI

I, David E. Tlusty, Registered Land Surveyor, as Langlade County Surveyor, certify that the corner location on this record was determined by me and that this U. S. Public Land Survey Monument Record is correct to the best of my knowledge and belief.

