

CERTIFIED LAND CORNER RESTORATION

Index No. P-13

State of Wisconsin }
 County of LANGLADE } ss.

I WILLIAM F. KELLY, do hereby certify that on the 16th day of DEC., 19 81, I found evidence of the E 1/4 corner of SEC. 21 Township 33, North, Range 9 EAST, Fourth Principal Meridian, as described hereon; and that from this evidence I established a new monument and accessories as described hereon to perpetuate the original location of this corner.

Resident witnesses:

R. J. McCARTHY

History of original corner establishment:

ORIGINAL CORNER ESTABLISHED BY
 HIRAM C. FELLOWS IN SEPT-OCT, 1860.

CORNER RE-ESTABLISHED IN HINTZ
 SURVEY IN THE 1930'S.

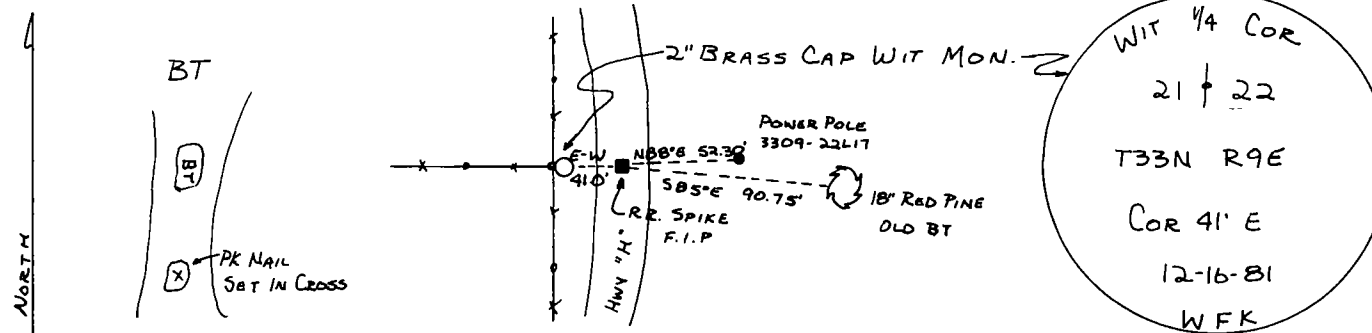
Description of corner evidence found:

R.R. SPIKE, FOUND IN PLACE.
 FOUND 1 OLD BT, RESCRIBED IT.
 SET A 2" x 42" BLACK IRON PIPE
 WITH BRASS CAP WITNESS MONUMENT.

RES. WIT. IDENTIFIED LOCATION
 OF CORNER



Description of monument and accessories I established to perpetuate the original location of this corner.



Dated at ELCHO, Wis., this 16th day of DEC., 19 81.

Signature William F. Kelly Title COUNTY SURVEYOR Registration No. 1098
 (County Surveyor, Registered Land Surveyor, or other duly authorized official)

Office of Register of Deeds, County of _____, I hereby certify that the within instrument was filed in this office for record on the _____ day of _____, 19 _____ at _____ o'clock _____ M.

(Register of Deeds)

By _____ Deputy

FORM 985 H C MILLER CO., MILWAUKEE

○ = Corner monument restored.