

LANGLADE COUNTY U.S. PUBLIC LAND CORNER RESTORATION

The South 1/4 corner of Section 21, T. 33 N., R. 9 E., Langlade County, WI.

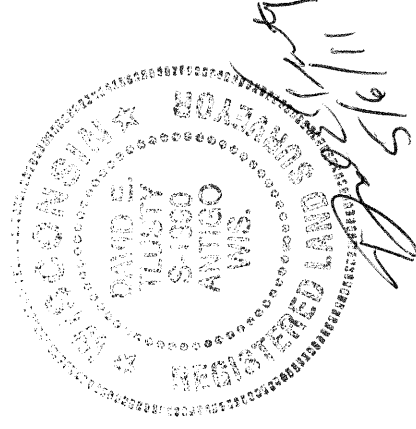
Corner was: (check all that apply)

4330921 0020

- Restored through acceptance of an obliterated evidence location.
- Restored through acceptance of a found perpetuated location.
- Determined to be lost and re-established through proportionate methods.
- Show bearings and distances to PLSS corners used for proportioning, and show original distances).
- Restored/recovered/re-established in a location that differs from a previously established position.
- (Show difference in plan view below).
- Check here if additional information is shown on the reverse side of this form.

Describe record evidence, recovered physical evidence, occupational evidence, testimonial evidence and all other evidence considered in the recovery/restoration of the corner.

See history on sheet 2



Physical description of the monument set:

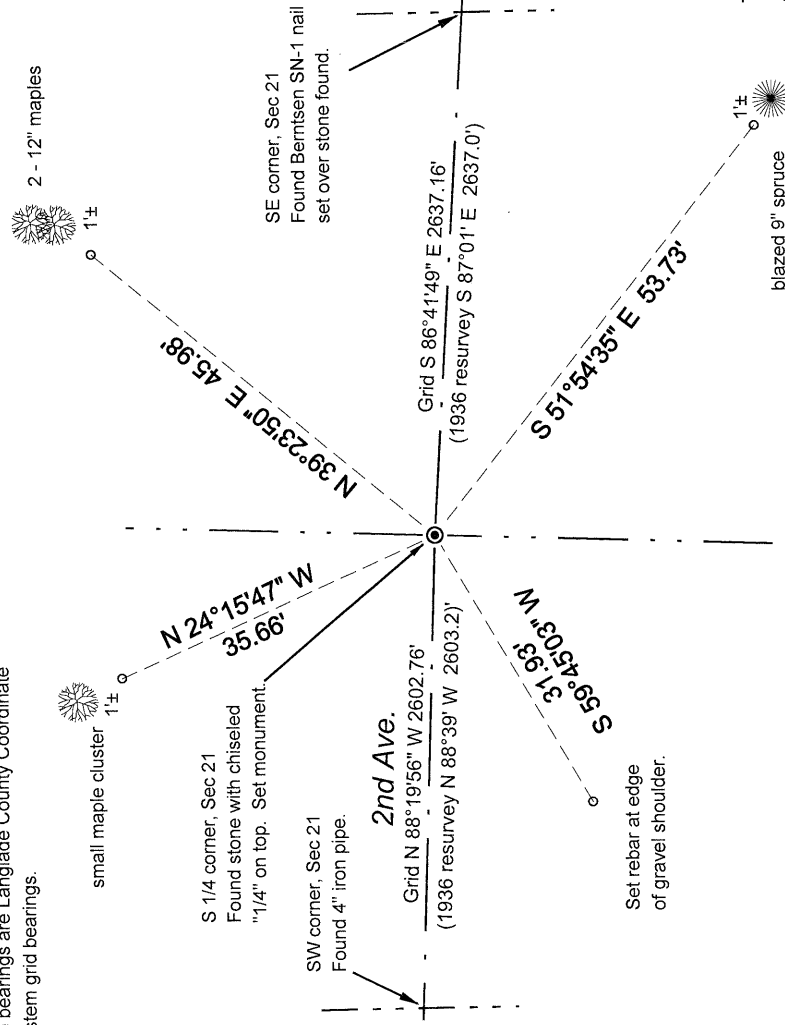
For the corner, I set a 2" x 30" iron pipe, top down 0.4'. Laid the found stone on the west edge of the pipe set. I set a Berntsen Deep-1 magnet under the monument set.

Describe the accessories used to perpetuate the corner. Include a plan view drawing and accessories found/set. Describe measuring point on bearing trees. Show any topographic features that would aid in future recovery of the corner.

LEGEND

- 3/4" x 30" rebar set flush
- ⊙ 2" iron pipe with brass cap set in place of stone found.
- white vinyl sign post set

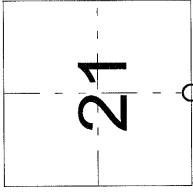
Tie bearings are Langlade County Coordinate system grid bearings.



Field book: FB4-144



Index No. R 11 33-09



○ = corner perpetuated
The South Quarter
corner of Section 21,
T. 33 N., R. 9 E.,
Langlade County, WI

I, David E. Tlusty, Registered Land Surveyor, as Langlade County Surveyor, certify that the corner location on this record was determined by me and that this U.S. Public Land Survey Monument Record is correct to the best of my knowledge and belief.

LANGLADE COUNTY U.S. PUBLIC LAND CORNER RESTORATION

History of the Quarter corner common to

Sections 21 & 28, T33N, R09E.

The original corner was established in 1860 by Hiram C. Fellows. Original bearing trees: fir, 7", S58°E, 20 links and a birch, 8", N10°W, 8 links.

The 1930's resurvey notes, C. H. Parker stated: "This 1/4 corner was marked with a rotted wooden stake below the surface of the road and referenced with a birch BT. We removed the stake and replaced it with a 12x17x31" red field stone set 6" below the surface of the road and marked 1/4 on top.

In 1981 W.F. Kelly, for the history of this corner stated "Iron bar set by D. Hintz about 1936". Under evidence found, Kelly further stated: "Iron bat (below surface) found in place. Set RR spike over iron bar. Set a 2" x 42" black iron pipe with brass cap witness monument. Found and rescribed 1 old BT. Scribed 1 new BT."

On 10/22/2010 Dave Tlusty, Dan Hoffmeister dug with county backhoe. At 1' down, found a 1" iron pipe. At 20" down, found a RR spike and just below the RR spike, found a 3/4" x 12" iron rod. At just over 20" deep, found a red field stone, leaning on its side. Tipped the stone upright to reveal a 1/4 chiseled on top, obviously the stone set in the 1930's resurvey. In place of the stone found, I set a 2" x 30" iron pipe, top of which is down 0.4' below the road surface. I laid the found stone on the west edge of the pipe set and I set a Bernsten Deep-1 magnet under the monument set.

Kelly apparently assumed that Hintz resurveyed this township and assumed that he set an iron rod. Kelly obviously didn't have the resurvey notes which indicated that C.H. Parker did the survey and that Parker set a field stone for the corner.

The 1" iron pipe found was S 22°08' E, 3.69 feet from the corner.
The RR spike found was S 19°19' E, 2.57 feet from the corner.