

LANGLADE COUNTY U.S. PUBLIC LAND CORNER RESTORATION

The Southeast corner of Section 21, T. 33 N., R. 9 E., Langlade County, WI.

Corner was: (check all that apply)

43309210000

- Restored through acceptance of an obliterated evidence location.
- Restored through acceptance of a found perpetuated location.
- Determined to be lost and re-established through proportionate methods
(Show bearings and distances to PLSS corners used for proportioning, and show original distances).
- Restored/recovered/re-established in a location that differs from a previously established position.
(Show difference in plan view below).
- Check here if addition information is shown on the reverse side of this form.

Describe record evidence, recovered physical evidence, occupational evidence, testimonial evidence and all other evidence considered in the recovery/restoration of the corner.

The original corner was established in 1860 by Hiram C. Fellows. Original bearing trees: tamarac, 14", S50°E, 20 links and a tamarac, 12", N12°W, 15 links. In the 1936 resurvey of a portion of this township, C.H.Parker said the corner "was marked with a 12x18x27" red stone 12" below the surface of the intersection of X road. We marked a cross on top of the stone and scribed two B.T.'s." A 1976 map (#30267) by Radtke shows this corner as being a railroad spike. In 1986, former surveyor Kelly said the corner was reestablished by G. Radtke in 1974. He also said "corner witnessed in Feb. 1981 by W.F. Kelly". He then said "Road construction destroyed witness trees. Rewitnessed corner and marked new bearing trees 6-22-86". 07/21/04 Dave Tlusty, Jason Thom and Dave Meyer found and short tied existing RR spike, then dug with a backhoe. Down 4.3' found red stone as described above with good "X" on top. Accepted stone as the best evidence of the original corner location.

Physical description of the monument set:

Left existing stone in place and set a Berntsen "Deep1" magnet, 0.8' north of the center of the stone.
10/05/04 For the corner, I set a Berntsen SN-1 nail in new pavement.

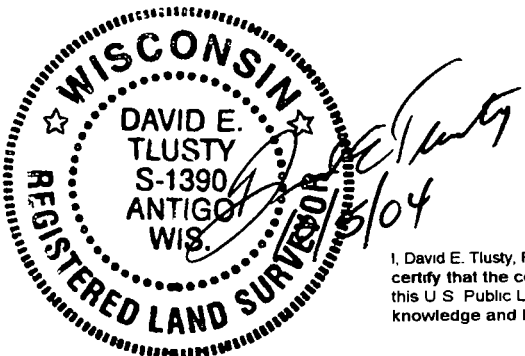
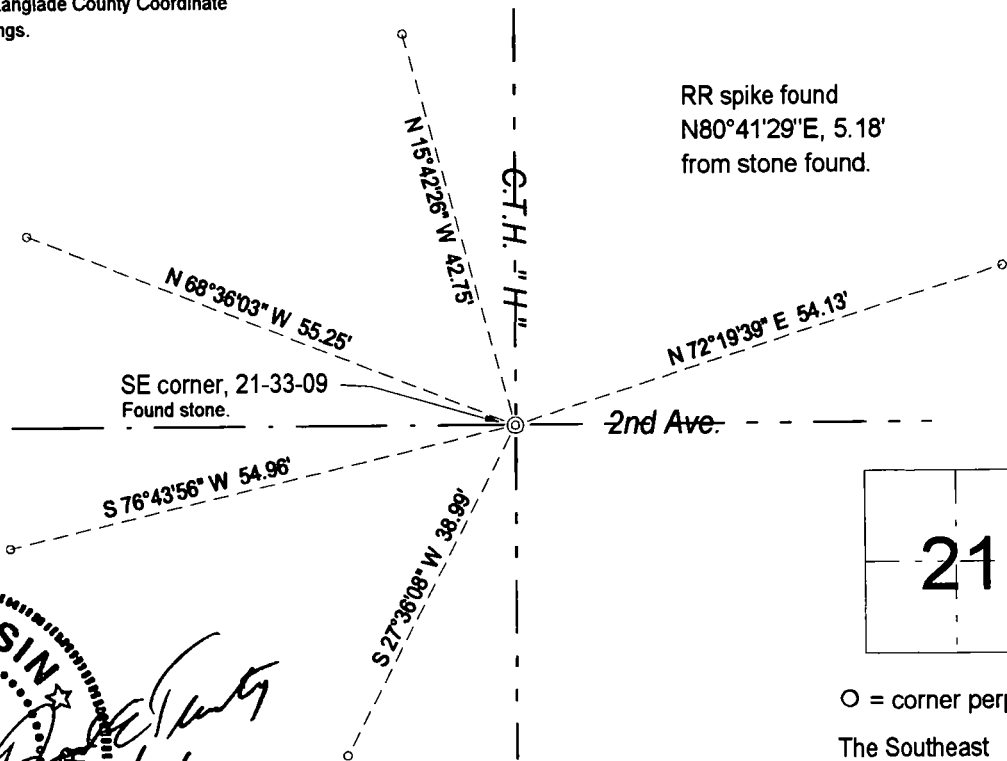
Describe the accessories used to perpetuate the corner. Include a plan view drawing and accessories found/set. Describe measuring point on bearing trees. Show any topographic features that would aid in future recovery of the corner.

LEGEND

- 3/4" x 30" rebar set flush
- 3/4" iron pipe found unless noted otherwise

Tie bearings are Langlade County Coordinate system grid bearings.

Field book FB4-132



I, David E. Tlusty, Registered Land Surveyor, as Langlade County Surveyor, certify that the corner location on this record was determined by me and that this U S Public Land Survey Monument Record is correct to the best of my knowledge and belief

○ = corner perpetuated
The Southeast corner of Section 21, T. 33 N., R. 9 E., Langlade County, WI

Index No.

R13 33-09

U. S. PUBLIC LAND SURVEY MONUMENT RECORD

INSTRUCTIONS: This record shall show the location of the corner and shall include all of the following nine elements (a through i).

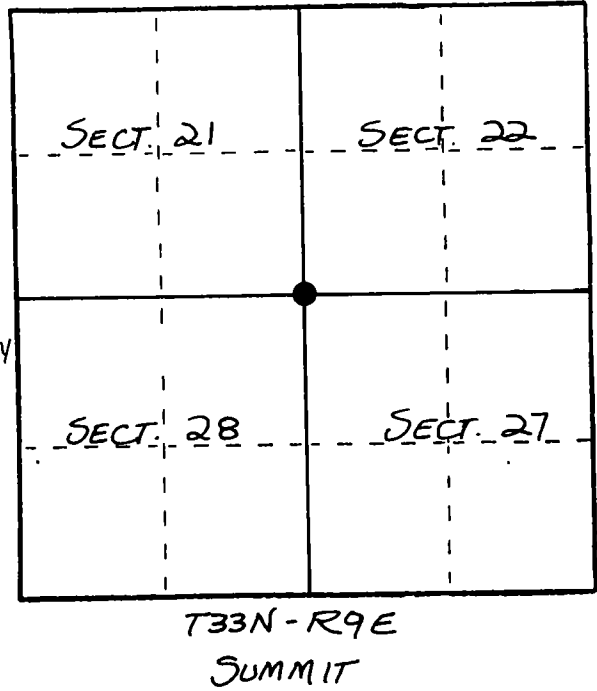
(a) Identify the corner by reference to the U.S. public land survey system.

○ = Corner monument restored.

ORIGINAL CORNER ESTABLISHED BY H.C. FELLOWS IN SEPT., 1860.

CORNER REESTABLISHED BY G. RADTKE, 1974.

CORNER WITNESSED IN FEB., 1981 BY W.F. KELLY



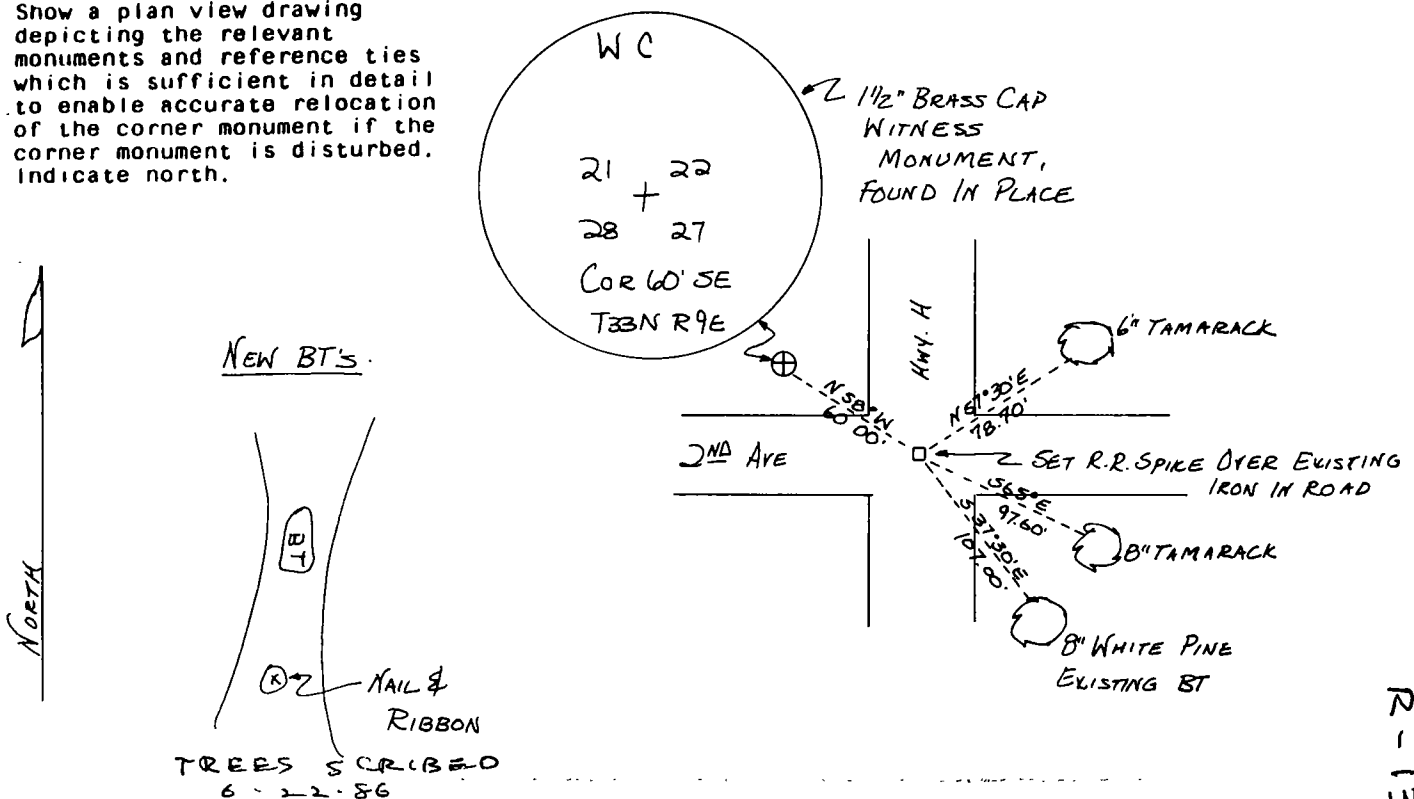
(b) Describe any record evidence, monument evidence, occupational evidence, testimonial evidence or any other material evidence you considered, and whether the monument was found or placed.

ROAD CONSTRUCTION DESTROYED WITNESS TREES.

REWITNESSED CORNER & MARKED NEW BEARING TREES, 6-22-86.

(c) In the plan view drawing below, provide reference ties to at least 4 witness monuments, or, if the location is within a municipality, to at least 2 witness monuments. (Witness monuments shall be made of concrete, natural stone, iron or other equally durable material.) Describe witness monuments.

(d) Show a plan view drawing depicting the relevant monuments and reference ties which is sufficient in detail to enable accurate relocation of the corner monument if the corner monument is disturbed. Indicate north.



(e) Describe any material discrepancy between the location of the corner as restored or reestablished and the location of that corner as previously restored or reestablished by distance and direction. Show the discrepancy on the plan view drawing under (d), above. Show the distances between the corner as previously restored or reestablished and (1) the corner as restored or reestablished, and (2) to at least 2 of the witness monuments shown on the drawing in (d), above.

NONE

(f) Was the corner restored through acceptance of (1) an obliterated evidence location, or, (2) a found perpetuated location?

(2)

(g&h) Was the corner reestablished through lost corner proportionate methods? If so, show the method, including the directions and distances to other public land survey corners used as evidence or used for proportioning in determining the corner location?

No.



(1) I, WILLIAM F. KELLY R.L.S. 1098
(type or print name) certify that the corner location shown on this record was determined by me or under my direction and control and that this U.S. Public Land Survey Monument Record is correct and complete to the best of my knowledge and belief.

William F. Kelly 12-11-86
Signature Date

CERTIFIED LAND CORNER RESTORATION

Index No. R-13

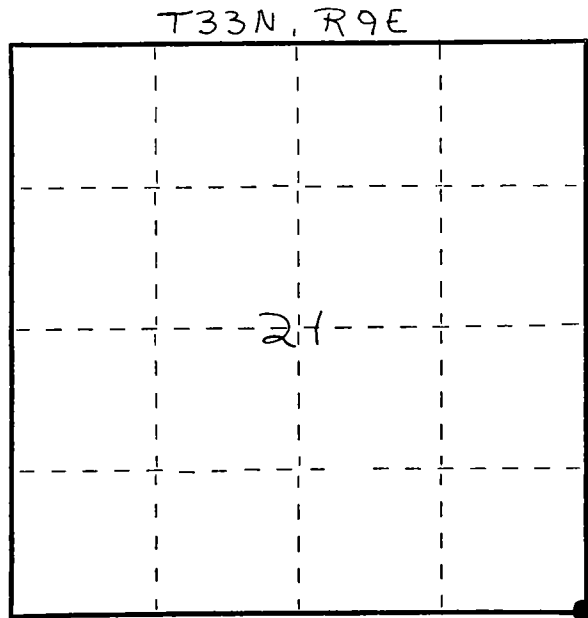
State of Wisconsin }
County of LANGLADE } ss.

I WILLIAM F. KELLY, do hereby certify that on the 6th day of FEB., 1901, I found evidence of the SE corner of Sec. 21 Township 33, North, Range 9E, Fourth Principal Meridian, as described hereon; and that from this evidence I established a new monument and accessories as described hereon to perpetuate the original location of this corner.

Resident witnesses:

.....
.....
.....

FORM 985 M. C. MILLER CO., MILWAUKEE



○ = Corner monument restored.

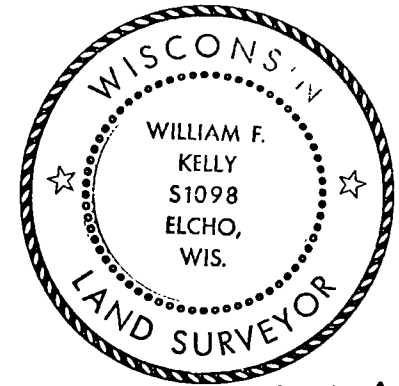
History of original corner establishment:

ORIGINAL CORNER ESTABLISHED
BY HIRAM C. FELLOWS IN 1860.

Description of corner evidence found:

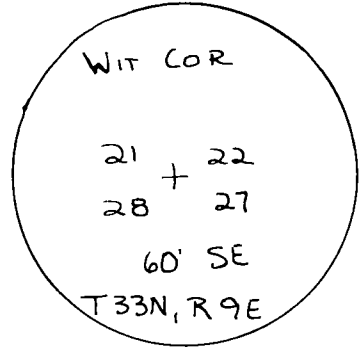
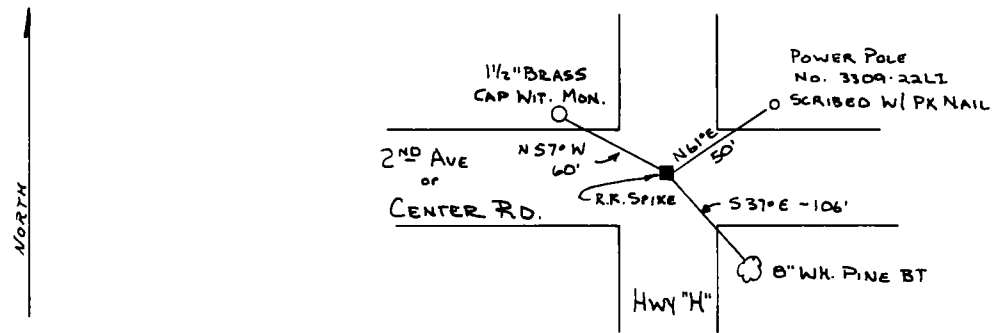
FOUND R.R. SPIKE WITH
1 1/2" BRASS CAP WIT. MON.
CORNER WAS SET BY
DYNAMIC ENGINEERING.

IDENTIFIED WITNESS
MONUMENTS.



William F. Kelly

Description of monument and accessories I established to perpetuate the original location of this corner.



Dated at ELCHO, Wis., this 6th day of FEB., 1901.

Signature William F. Kelly Title COUNTY SURVEYOR Registration No. 1098
(County Surveyor, Registered Land Surveyor, or other duly authorized official)

Office of Register of Deeds, County of, I hereby certify that the within instrument was filed in this office for record on the day of, 19..... at o'clock M.

.....
(Register of Deeds)
By..... Deputy