

LANGLADE COUNTY U.S. PUBLIC LAND CORNER RESTORATION

The South 1/4 corner of Section 20, T. 33 N., R. 9 E., Langlade County, WI.

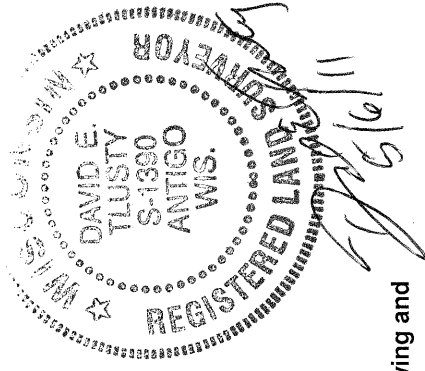
Corner was: (check all that apply)

4330920 0020

- Restored through acceptance of an obliterated evidence location.
- Restored through acceptance of a found perpetuated location.
- Determined to be lost and re-established through proportionate methods.
- Show bearings and distances to PLSS corners used for proportioning, and show original distances).
- Restored/recovered/re-established in a location that differs from a previously established position.
- (Show difference in plan view below).
- Check here if additional information is shown on the reverse side of this form.

Describe record evidence, recovered physical evidence, occupational evidence, testimonial evidence and all other evidence considered in the recovery/restoration of the corner.

See history on sheet 2.



Physical description of the monument set:

Left the stone in place and set a Berntsen Deep-1 magnet on south edge of stone.

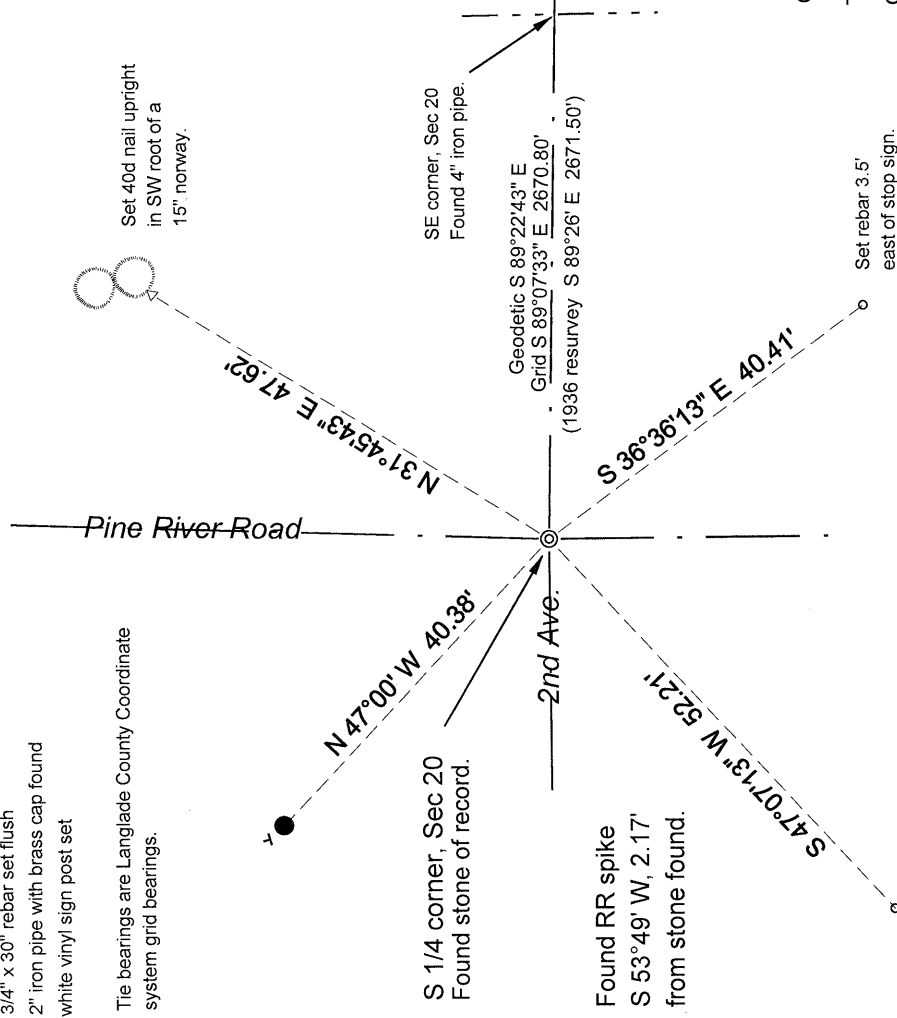
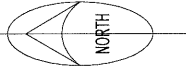
Describe the accessories used to perpetuate the corner. Include a plan view drawing and accessories found/set. Describe measuring point on bearing trees. Show any topographic features that would aid in future recovery of the corner.

LEGEND

- 3/4" x 30" rebar set flush
- 2" iron pipe with brass cap found
- white vinyl sign post set

Tie bearings are Langlade County Coordinate system grid bearings.

Field book: FB4-146



S 1/4 corner, Sec 20
Found stone of record.

Found RR spike
S 53°49' W, 2.17'
from stone found.

SE corner, Sec 20
Found 4" iron pipe.

Set 40d nail upright
in SW root of a
15" norway.

Geodetic S 89°22'43" E
Grid S 89°07'33" E 2670.80'
(1936 resurvey S 89°26' E 2671.50')

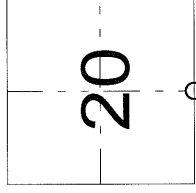
Set rebar 3.5'
east of stop sign.

Set rebar 4"
west of street sign.

I, David E. Tlusty, Registered Land Surveyor, as Langlade County Surveyor, certify that the corner location on this record was determined by me and that this U.S. Public Land Survey Monument Record is correct to the best of my knowledge and belief.

Index No. _____

R7 33-09



○ = corner perpetuated

The South Quarter
corner of Section 20,
T. 33 N., R. 9 E.,
Langlade County, WI

LANGLADE COUNTY
U.S. PUBLIC LAND CORNER RESTORATION

History of the Quarter corner common to

Sections 20 & 29, T33N, R09E.

The original corner was established in 1860 by Hiram C. Fellows. Original bearing trees: birch, 12", S30W, 4 links and a birch, 15", N36°E, 28 links.

In 1902, Webly (FB126-2) stated "E bet 20-29, 39.74 ch, 44 lks N of 1/4 cor. Orig BTs both standing, set stake. New BT's: birch, 10", S64E, 51 links and hemlock N56W, 107 links."

In the 1936 resurvey notes of part of this township, C.H. Parker noted: "Found old birch B.T. Using tie from B.T. found stake as described by Weblys survey in 1903. Stake was at centerline of cross road. Replaced stake with an 8" x 12" x 27" blue stone 4" below the surface of the road. Marked 1/4 on top of stone."

In December 1981, former survey William Kelly said: "1" iron bar, found in place". He marked two Bearing trees and set a 2" iron pipe witness monument NW 40.00 feet.

In November, 2007, on CSM Vol 14, Pg. 135, Anthony Jones, S-2508, said: "Found iron rod 8" under surface of gravel road".

On 10/22/2010 Dave Tlusty, Dan Hoffmeister dug with county backhoe at center of road intersection. At just below the surface, we found the stone called for in 1936. The top of stone had been scraped many times by the road grader according to Ralph Borneman who has owned the land to the SE of the corner since the 1940's. His remark of the grader scraping the stone confirms what we found: a well worn top portion with partial markings visible on one edge, similar to the marks found on the stone recovered at the South 1/4 of Section 21. During out digging, we broke the top of the stone off. The remaining portion is upright and solid in the ground, top down 0.3'. The exposed top measures 8" x 12". Based on the record of Webly and the perpetuation of Parker in 1936, I accepted the stone as evidence of the original corner location.

At S 53°49' W, 2.17 feet I found a RR spike, down 8". It is most likely the RR spike that Kelly referred to as an iron rod as I meas. 40.03 feet from RR spk to WM NW; Kelly had 40'. The RR spike is also what Anthony Jones called an iron rod as the distance from it to what he used for the SE corner of Section 20 as shown on his map is 2674.07' – I measure between the same two points as 2674.15'.