

CERTIFIED LAND CORNER RESTORATION

Index No. P-5

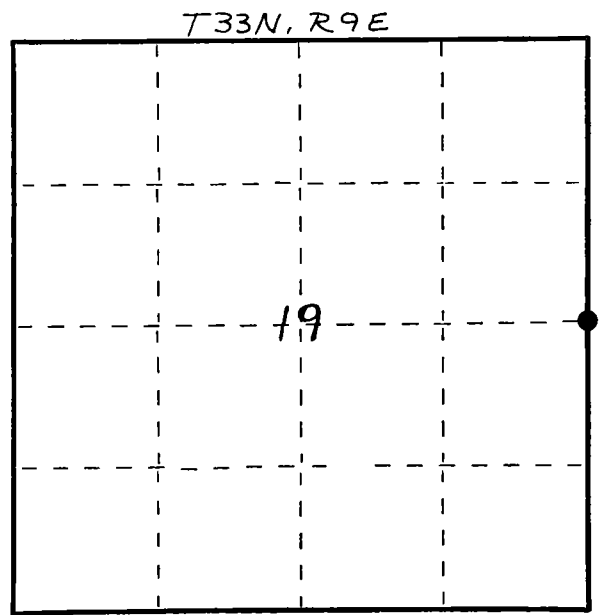
State of Wisconsin }
 County of LANGLADE } ss.

I WILLIAM F. KELLY, do hereby certify that on the 8th day of DEC., 1981, I found evidence of the E. 1/4 corner of SECT. 19 Township 33, North, Range 9 EAST, Fourth Principal Meridian, as described hereon; and that from this evidence I established a new monument and accessories as described hereon to perpetuate the original location of this corner.

Resident witnesses:

.....

FORM 985 M. C. MILLER CO., MILWAUKEE



○ = Corner monument restored.

History of original corner establishment:

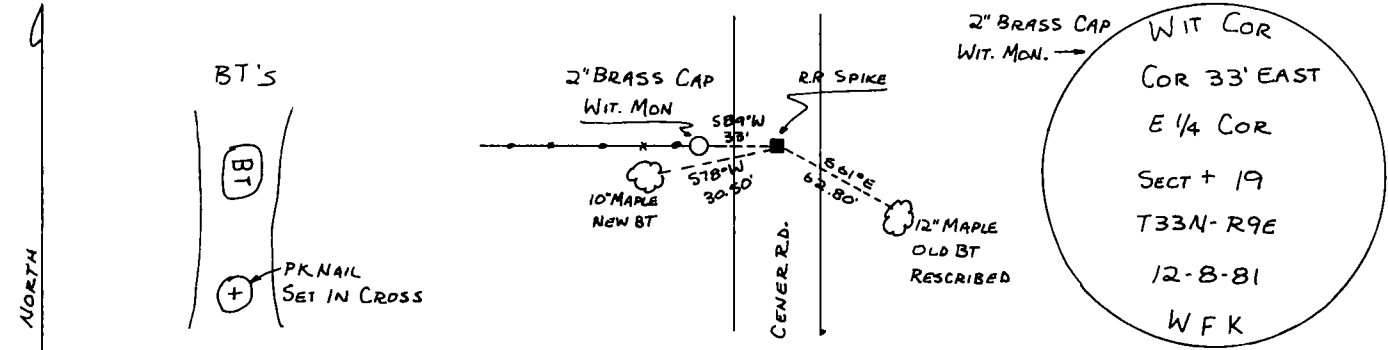
ORIGINAL CORNER ESTABLISHED BY
 HIRAM C FELLOWS IN SEPT-OCT, 1860

CORNER RE-ESTABLISHED IN 1930'S } ?
 RESURVEY BY THE CCC.

Description of corner evidence found:

IRON BAR, FOUND IN PLACE, BELOW SURFACE.
 SET R.R. SPIKE OVER IRON BAR. R.R. SPIKE IS 6" BELOW SURFACE. SET A 2" x 42" BLACK IRON PIPE WITH BRASS CAP WITNESS MONUMENT. FOUND 1 EXISTING BT. MARKED 1 NEW BT.

Description of monument and accessories I established to perpetuate the original location of this corner.



Dated at ELCHO, Wis., this 8th day of DEC., 1981

Signature William F. Kelly Title COUNTY SURVEYOR Registration No. 1098
 (County Surveyor, Registered Land Surveyor, or other duly authorized official)

Office of Register of Deeds, County of _____, I hereby certify that the within instrument was filed in this office for record on the _____ day of _____, 19____ at _____ o'clock _____ M.

(Register of Deeds)

By _____ Deputy

