

CERTIFIED LAND CORNER RESTORATION

Index No. R-2

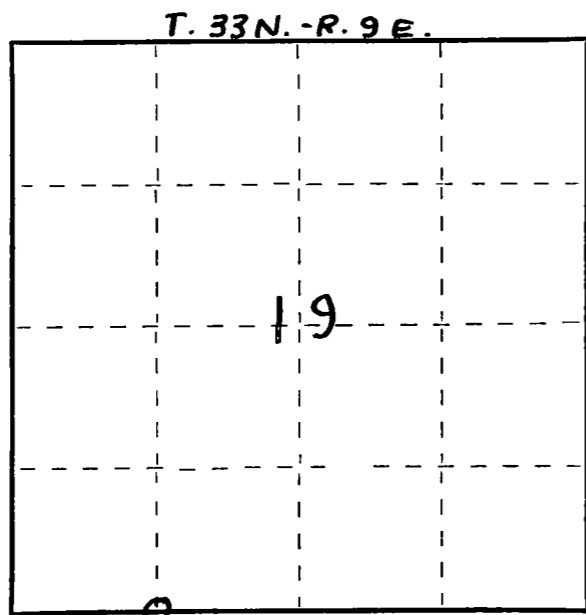
State of Wisconsin }
County of LANGLADE } ss.

I, WILLIAM F. KELLY, do hereby certify that on the 16TH day of SEPTEMBER 19 77, I found evidence of the 1/8 corner of SECTION 19 Township 33, North, Range 9E, Fourth Principal Meridian, as described hereon; and that from this evidence I established a new monument and accessories as described hereon to perpetuate the original location of this corner.

Resident witnesses:

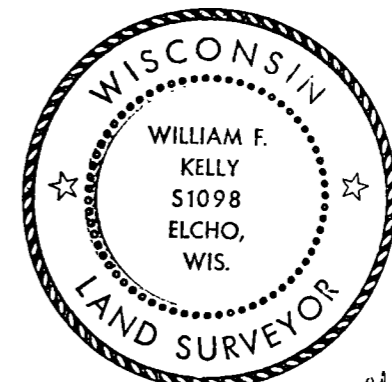
.....
.....
.....

FORM 985 H. C. MILLER CO. MILWAUKEE



○ = Corner monument restored.

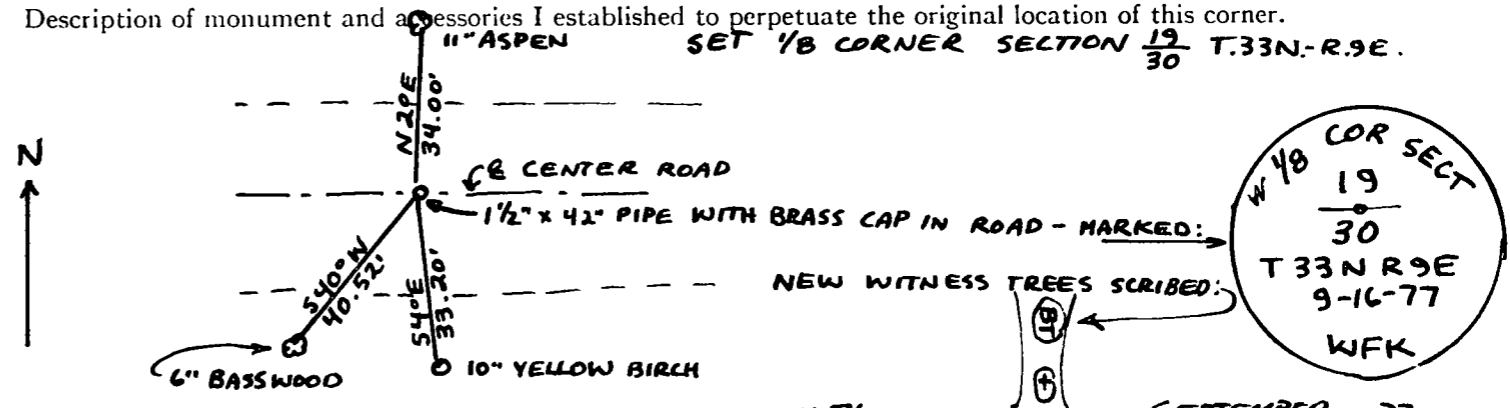
History of original corner establishment:



William F. Kelly 9-16-77

Description of corner evidence found:
CORNER PROPORTIONED FROM ORIGINAL NOTES ON RETRACEMENT SURVEY BY OMENS ILLINOIS.

Description of monument and accessories I established to perpetuate the original location of this corner.
SET 1/8 CORNER SECTION 19 T.33N.-R.9E.



Dated at ELCHO, Wis., this 16TH day of SEPTEMBER, 1977

Signature William F. Kelly Title REGISTERED LAND SURVEYOR Registration No. 51098
(County Surveyor, Registered Land Surveyor, or other duly authorized official)

Office of Register of Deeds, County of _____, I hereby certify that the within instrument was filed in this office for record on the _____ day of _____, 19____ at _____ o'clock _____ M.

.....
(Register of Deeds)
By..... Deputy