

CERTIFIED LAND CORNER RESTORATION

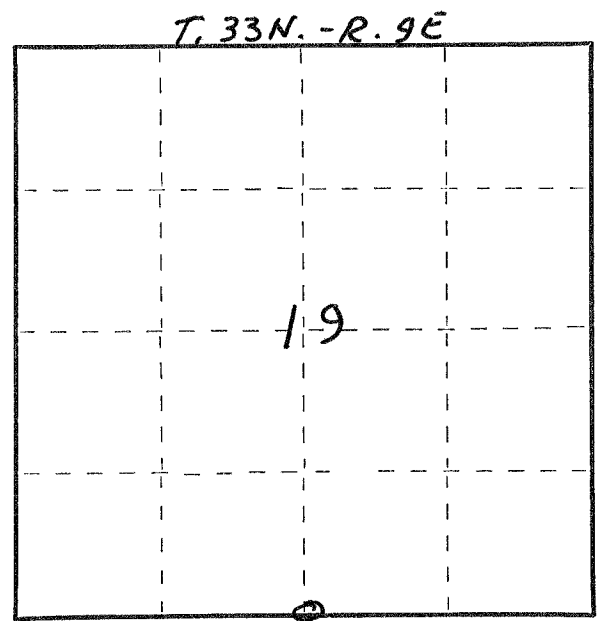
Index No. R-3

State of Wisconsin }  
County of LANGLADE } ss.

I WILLIAM F. KELLY, do hereby certify that on the 22ND day of SEPTEMBER, 1977, I found evidence of the 1/4 SECTION corner of SECTION 19 Township 33, North, Range 9E, Fourth Principal Meridian, as described hereon; and that from this evidence I established a new monument and accessories as described hereon to perpetuate the original location of this corner.

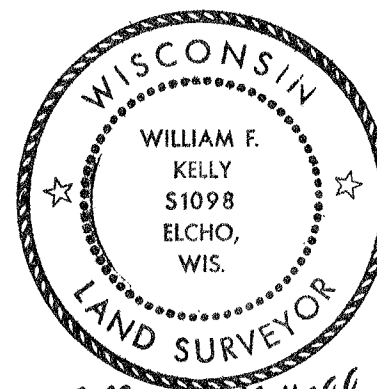
Resident witnesses:

.....  
.....  
.....



○ = Corner monument restored.

History of original corner establishment:

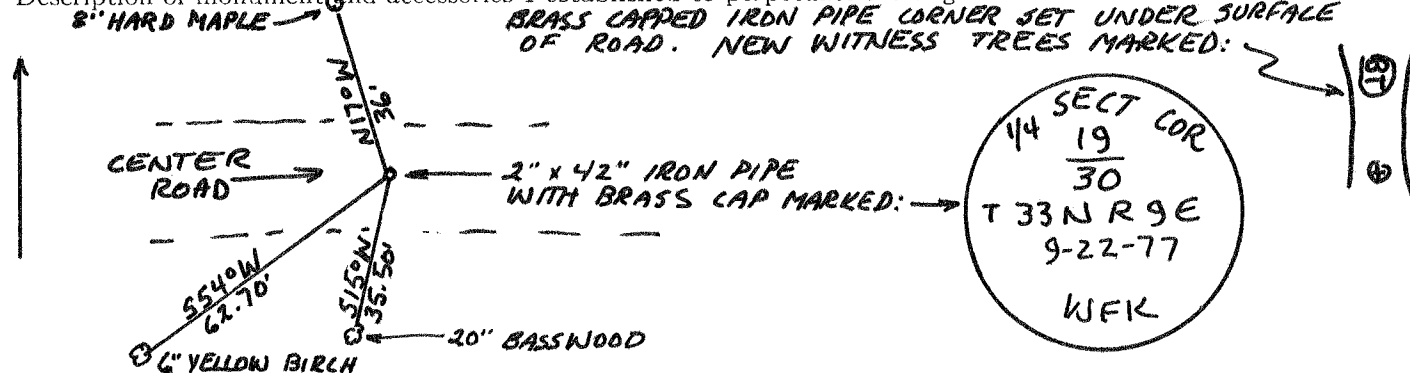


*William F. Kelly 9-22-77*

Description of corner evidence found:

SOUTH 1/4 CORNER SECTION 19 T. 33N. - R. 9E. LOCATED FROM CONTROL SURVEY ON RETRACEMENT OF SECTION 30. T. 33N. - R. 9E. BY OWENS. ILLINOIS.

Description of monument and accessories I established to perpetuate the original location of this corner.



Dated at ELCHO, Wis., this 22ND day of SEPTEMBER, 1977

Signature William F. Kelly Title REGISTERED LAND SURVEYOR Registration No. 51098  
(County Surveyor, Registered Land Surveyor, or other duly authorized official)

Office of Register of Deeds, County of....., I hereby certify that the within instrument was filed in this office for record on the.....day of....., 19..... at.....o'clock..... M.

(Register of Deeds)

By.....Deputy

FORM 985 H. G. MILLER CO., MILWAUKEE