

LANGLADE COUNTY U.S. PUBLIC LAND CORNER RESTORATION

The Southeast corner of Section 18, T. 33 N., R. 9 E., Langlade County, WI.

Corner was: (check all that apply)

4330918 0000

- Restored through acceptance of an obliterated evidence location.
- Restored through acceptance of a found perpetuated location.
- Determined to be lost and re-established through proportionate methods.
- Show bearings and distances to PLSS corners used for proportioning, and show original distances).
- Restored/recovered/re-established in a location that differs from a previously established position.
- (Show difference in plan view below).
- Check here if additional information is shown on the reverse side of this form.

Describe record evidence, recovered physical evidence, occupational evidence, testimonial evidence and all other evidence considered in the recovery/restoration of the corner.

The original corner was established in 1860 by Hiram C. Fellows. Original bearing trees: hemlock, 20", N50°W, 9 links and an elm, 12", S50°E, 16 links. In May, 1902, Weby, (FB126-6) went N from this corner which he said was "stone set by Hutchinson". June 11, 1936, C.H. Parker described the corner as "marked with a large field stone". In 1981, former surveyor Kelly said: "iron rod (buried) found in place. Set PK nail over iron rod. Found 1 old BT and 1 BT stump." He also set an iron pipe with brass cap for witness corner and marked witness trees. 06/11/01 D. Tlusty, Emily Tlusty and Mike Kielcheski dug with backhoe. Down 1.2', found a triangular, pink granite stone, approx. 7" x 7" x 7" on top and tapering bigger. This was the only stone found. I accept it as the best evidence of the original corner location. Did not find iron rod called for by Kelly.

Physical description of the monument set:

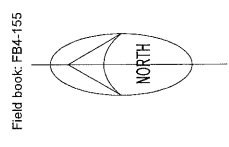
I left the existing stone in place and set a 1" x 30" iron pipe on the SE corner of the stone. 12/9/2003 I set a gearheaded spike, in new pavement, and over the stone found.

Describe the accessories used to perpetuate the corner. Include a plan view drawing and accessories found/set. Describe measuring point on bearing trees. Show any topographic features that would aid in future recovery of the corner.

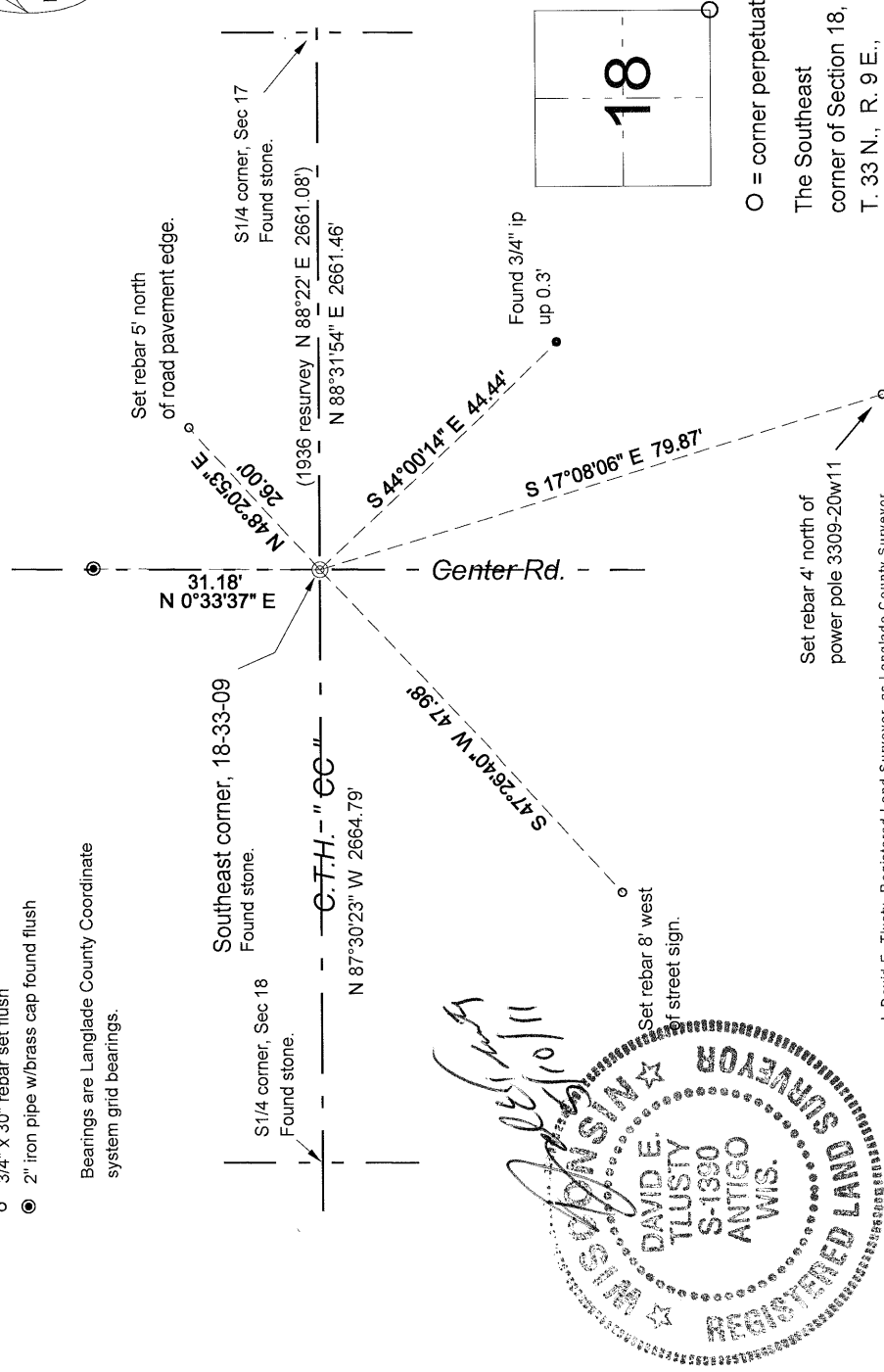
LEGEND

- 3/4" x 30" rebar set flush
- 2" iron pipe w/brass cap found flush

Bearings are Langlade County Coordinate system grid bearings.



Field book: FB4-155



Index No. N5 33-09

○ = corner perpetuated
The Southeast corner of Section 18, T. 33 N., R. 9 E., Langlade County, WI

I, David E. Tlusty, Registered Land Surveyor, as Langlade County Surveyor, certify that the corner location on this record was determined by me and that this U.S. Public Land Survey Monument Record is correct to the best of my knowledge and belief.