

CERTIFIED LAND CORNER RESTORATION

Index No. L-9

State of Wisconsin }  
County of LANGLADE } ss.

I WILLIAM F. KELLY, do hereby certify that on the 8<sup>th</sup> day of DEC., 1981, I found evidence of the E. 1/4 corner of SEC. 17 Township 33, North, Range 9 EAST, Fourth Principal Meridian, as described hereon; and that from this evidence I established a new monument and accessories as described hereon to perpetuate the original location of this corner.

Resident witnesses:

G. L. BTUEMKE

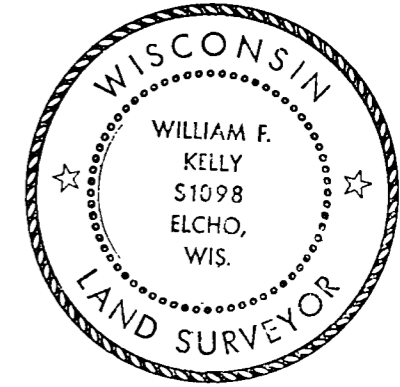
History of original corner establishment:

ORIGINAL CORNER ESTABLISHED BY  
HIRAM C. FELLOWS IN SEPT-OCT, 1860.

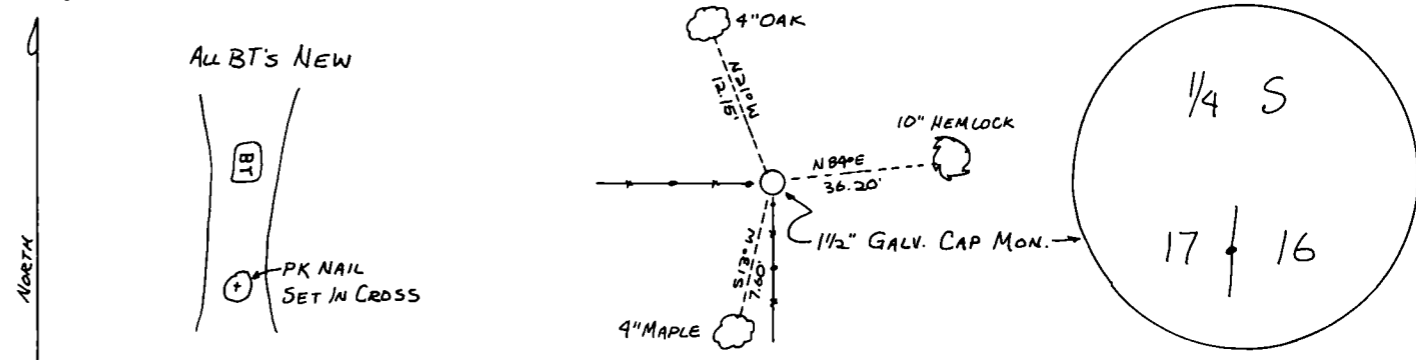
CORNER RE-ESTABLISHED BY 1930'S  
RESURVEY BY THE CLL.

Description of corner evidence found:

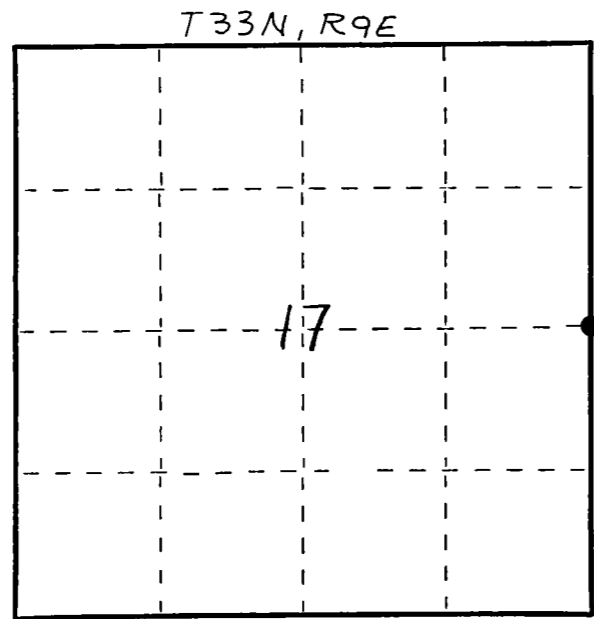
1 1/2" GALV. CAP MONUMENT,  
FOUND IN PLACE. SET MON UPRIGHT  
MARKED 3 NEW BT'S.



Description of monument and accessories I established to perpetuate the original location of this corner.



FORM 985 M. E. MILLER CO., MILWAUKEE



○ = Corner monument restored.

Dated at ELCHO, Wis., this 8<sup>th</sup> day of DEC., 1981

Signature William F. Kelly Title COUNTY SURVEYOR Registration No. 1098  
(County Surveyor, Registered Land Surveyor, or other duly authorized official)

Office of Register of Deeds, County of \_\_\_\_\_, I hereby certify that the within instrument was filed in this office for record on the \_\_\_\_\_ day of \_\_\_\_\_, 19\_\_\_\_ at \_\_\_\_\_ o'clock \_\_\_\_\_ M.

\_\_\_\_\_  
(Register of Deeds)

By \_\_\_\_\_ Deputy