

LANGLADE COUNTY U.S. PUBLIC LAND CORNER RESTORATION

The Southeast corner of Section 17, T. 33 N., R. 9 E., Langlade County, WI.

Corner was: (check all that apply)

- Restored through acceptance of an obliterated evidence location.
- Restored through acceptance of a found perpetuated location.
- Determined to be lost and re-established through proportionate methods.
 - Show bearings and distances to PLSS corners used for proportioning, and show original distances).
 - Restored/recovered/re-established in a location that differs from a previously established position.
 - (Show difference in plan view below).
- Check here if additional information is shown on the reverse side of this form.

4330917 0000

Describe record evidence, recovered physical evidence, occupational evidence, testimonial evidence and all other evidence considered in the recovery/restoration of the corner.

The original corner was established in 1860 by Hiram C. Fellows. Original bearing trees: ash, 10", N65°E, 16 links and a maple, 14", S01°W, 10 links. In notes dated April 11, 1936, C.H. Parker said: "Section corner is large field stone in the middle of the road and on the fence line". In 1981, former surveyor Kelly "Set PK nail over existing iron bar (buried in road). Set a 1 1/2" x 42" black iron pipe with brass cap witness monument. Location identified by resident (Vinol Bergman) as sect. cor." 06/11/01 D. Tlusty, Emily Tlusty and Mike Kielcheski dug with backhoe. Down 1.2', found 6" x 12" stone, planted upright and solid. To no ones surprise, I did not find iron bar mentioned by Kelly. The stone found is on the E-W centerline and in line with a fence North as per Parker. I accept this stone as the 1936 stone by Parker, and as the best evidence of the original corner location.

Physical description of the monument set:

Left the stone in place and set a 1" x 30" iron pipe on the N edge of the stone.
12/09/03 For the corner, I set a gearheaded 6" steel spike.

Describe the accessories used to perpetuate the corner. Include a plan view drawing and accessories found/set. Describe measuring point on bearing trees. Show any topographic features that would aid in future recovery of the corner.

LEGEND

- 3/4" x 30" rebar set flush
- 3/4" iron pipe found unless noted otherwise

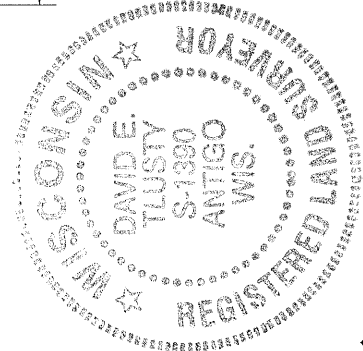
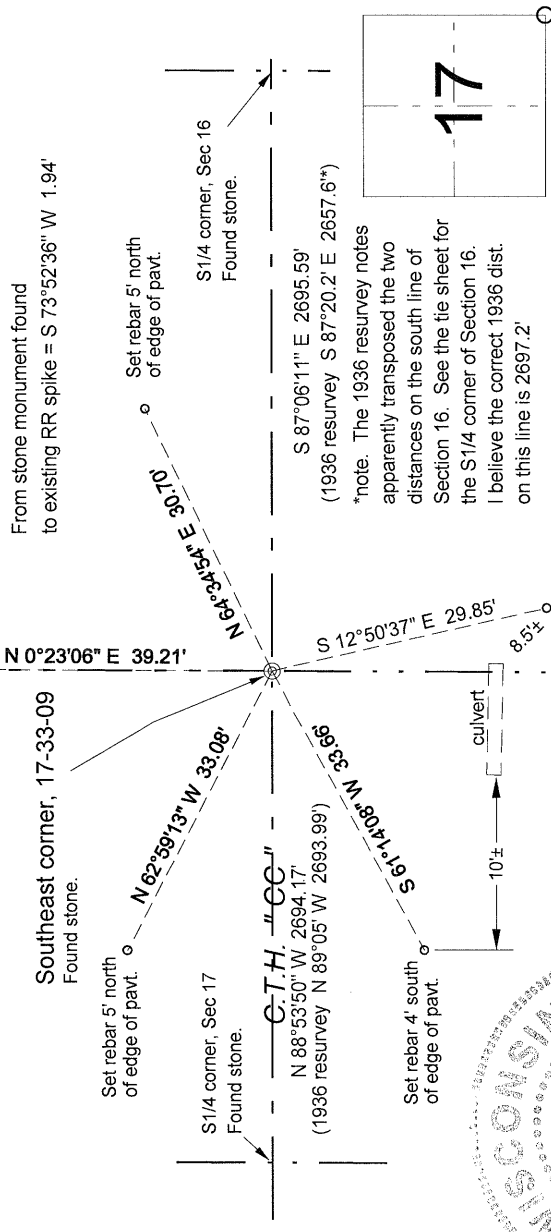
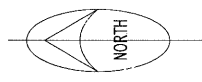
The bearings are Langlade County Coordinate system grid bearings.

LEGEND

- 3/4" x 30" rebar set flush
- 1 1/4" iron pipe with brass cap found
- ↳ White vinyl sign post set

The bearings are Langlade County Coordinate system grid bearings.

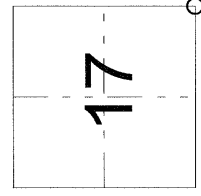
Field book: FB4-153



Langlade County Coordinates by RTK GPS using published NAD83(91) values at control monument Summit GPS
N 412229.976
E 560937.666

I, David E. Tlusty, Registered Land Surveyor, as Langlade County Surveyor, certify that the corner location on this record was determined by me and that this U.S. Public Land Survey Monument Record is correct to the best of my knowledge and belief.

Index No. N9 33-09



○ = corner perpetuated
The Southeast corner of Section 17, T. 33 N., R. 9 E., Langlade County, WI