

# LANGLADE COUNTY U.S. PUBLIC LAND CORNER RESTORATION

The East Quarter corner of Section 16, T. 33 N., R. 9 E., Langlade County, WI.

4330916 2000

Corner was: (check all that apply)

- Restored through acceptance of an obliterated evidence location.
- Restored through acceptance of a found perpetuated location.
- Determined to be lost and re-established through proportionate methods.  
Show bearings and distances to PLSS corners used for proportioning, and show original distances).
- Restored/recovered/re-established in a location that differs from a previously established position.  
(Show difference in plan view below).
- Check here if addition information is shown on the reverse side of this form.

**Describe record evidence, recovered physical evidence, occupational evidence, testimonial evidence and all other evidence considered in the recovery/restoration of the corner.**

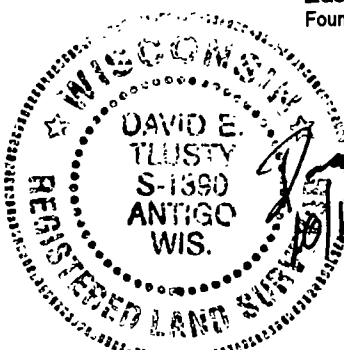
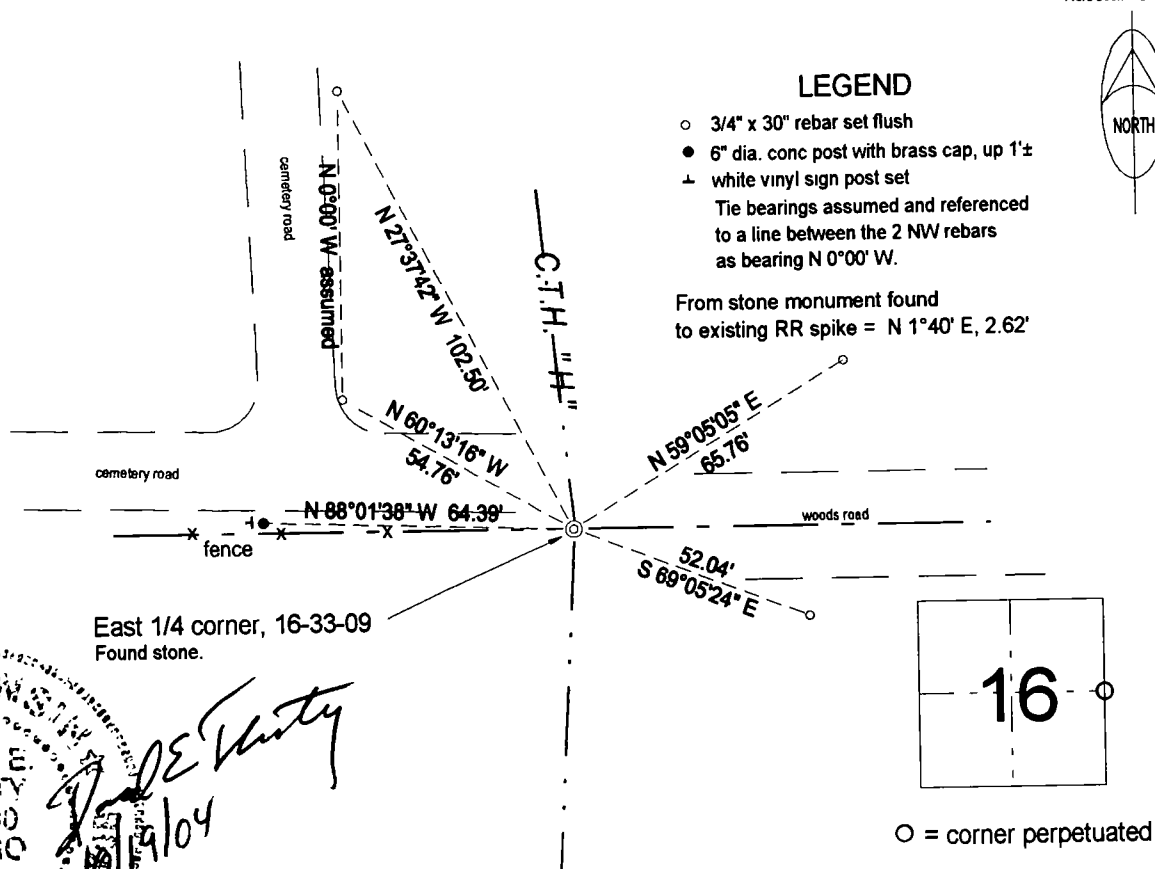
The original corner was established in 1860 by Hiram C. Fellows. The original bearing trees were birch, 30", N70°W, 20 links and a sugar, 15", S75°E, 17 links. From the resurvey notes dated 4/10/36, the corner is described as a "field stone in the middle of H, opposite fence on S. side of Cemetery. Buried about 8" deep". On a "Preservation of Landmarks" form prepared by the State Hwy. Commission dated 1962 and signed by Paul M. Johnson, Engineer II, the corner is shown as being in the center of Highway H and 2 concrete witness monuments were set to the West, at 51.3' and at 64.3'. There was no physical description of the corner monument on said form. 07/28/04 Dave Tlusty, Jason Thom, set short ties to an existing railroad spike and dug with backhoe. At 3.1' deep and in line with tangent centerlines south and north, and in line with an old fence to the west, we found a lone, large field stone, obviously planted upright. No other stone found. Accepted this stone as the field stone described in the 1936 resurvey notes and as the best evidence of the original corner location.

**Physical description of the monument set:**

I left the existing stone in place and set a Berntsen "Deep1" magnet (approx. 1" dia. x 1" long in a 1" x 1" x 3" plastic housing) on the south side of the stone.

**Describe the accessories used to perpetuate the corner. Include a plan view drawing and accessories found/set. Describe measuring point on bearing trees. Show any topographic features that would aid in future recovery of the corner.**

Field book FB4-136



I, David E. Tlusty, Registered Land Surveyor, as Langlade County Surveyor, certify that the corner location on this record was determined by me and that this U.S. Public Land Survey Monument Record is correct to the best of my knowledge and belief.

○ = corner perpetuated  
The East Quarter corner of Section 16, T. 33 N., R. 9 E., Langlade County, WI

Index No. L13 33-09

# PRESERVATION OF LANDMARKS

SECTION 59,635(7) WISCONSIN STATUTES  
COUNTY LANGLADE

TOWN SUMMIT

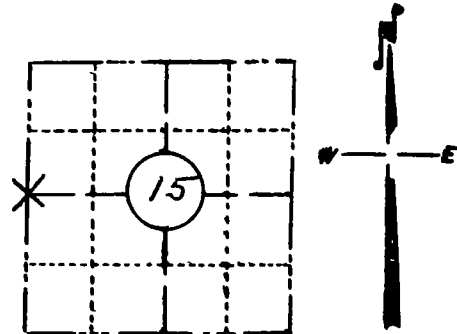
HIGHWAY COUNTY "H"

SECTION NO.'S 15 & 16

T. 33 N., R. 9 E.

TYPE OF LANDMARK 1/4 CORNER

LOCATION INDICATED ON SKETCH X



LOCATION SKETCH

*Brass Cap set in concrete, stamped,  
"1/4, 16 + 15, 51.3 FT. E."*

*64.3 FT. E.*

*E.-W. mag.*

*Power Pole  
# 3309-16R9*

*1/4 COR.  
HWY. STATION-  
ING 179+89.1*

*C.T.H. "H"*

*This space for copy of field notes or ties to the above described landmarks*

Field notes or records filed in book no. 8615  
 at the State of Wisconsin Hwy Commission office.  
 City of Rhinalander, Onaida County.  
 Located or established by Paul M Johnson, 1962  
 Title Engineer II

County Clerk's Office \_\_\_\_\_ County, Wis. }<sup>ss</sup>  
 Received for record Sept 18, 1962

Copy sent to County Surveyor \_\_\_\_\_, 19\_\_\_\_

*[Signature]*  
 \_\_\_\_\_  
 County Clerk

113