

# LANGLADE COUNTY U.S. PUBLIC LAND CORNER RESTORATION

The Southeast corner of Section 16, T. 33 N., R. 9 E., Langlade County, WI.

43309160000

**Corner was: (check all that apply)**

- Restored through acceptance of an obliterated evidence location
- Restored through acceptance of a found perpetuated location.
- Determined to be lost and re-established through proportionate methods.  
Show bearings and distances to PLSS corners used for proportioning, and show original distances).
- Restored/recovered/re-established in a location that differs from a previously established position  
(Show difference in plan view below)
- Check here if addition information is shown on the reverse side of this form.

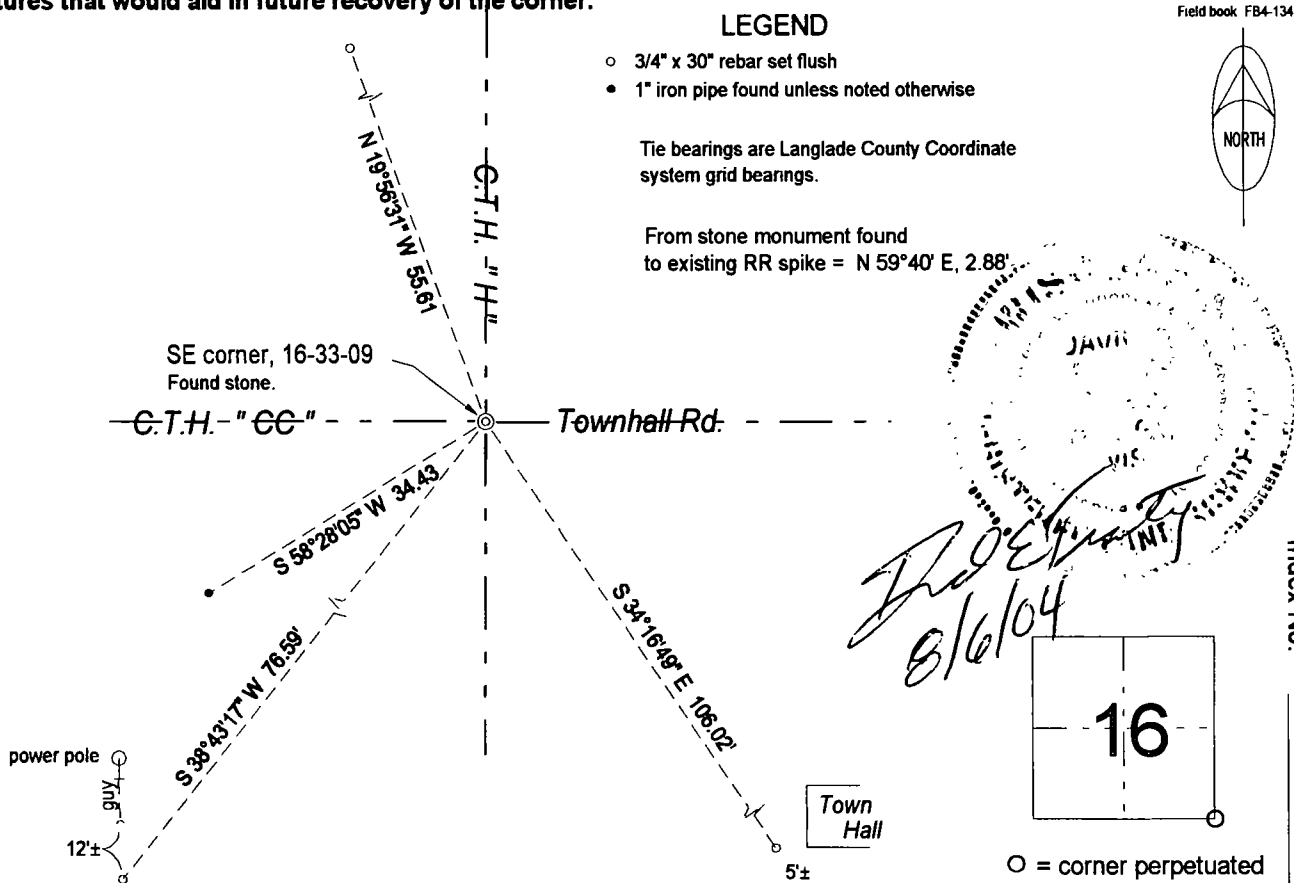
**Describe record evidence, recovered physical evidence, occupational evidence, testimonial evidence and all other evidence considered in the recovery/restoration of the corner.**

The original corner was established in 1860 by Hiram C. Fellows. Original bearing trees: sugar, 10", N40°E, 32 links and a birch, 20", S35°W, 50 links. In the 1936 resurvey of a portion of this township, Clyde Parker said the "corner is a large red stone in centerline x roads". In 1986, former surveyor Kelly said "corner reestablished from iron pipe evidence located in road intersection. Iron probably set by M. Hutchinson in 1930's. Notes missing." 07/21/04 D. Tlusty, Jason Thom, and Dave Meyer dug with backhoe and found a large (0.8' x 1.7') red granite stone with + on top. Stone was found 3.4 feet below the existing road at the intersection of CTH H and CTH CC. I did not find "iron pipe evidence" mentioned by Kelly. I accept the stone of record as found, as the best evidence of the original corner location.

**Physical description of the monument set:**

Left existing stone in place and set a 3/4" x 30" rebar on the east edge of the stone found.

**Describe the accessories used to perpetuate the corner. Include a plan view drawing and accessories found/set. Describe measuring point on bearing trees. Show any topographic features that would aid in future recovery of the corner.**



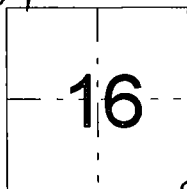
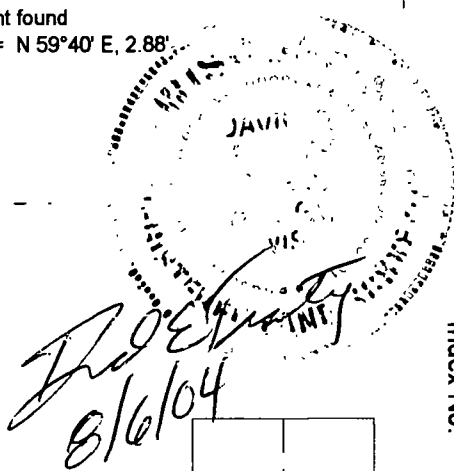
**LEGEND**

- 3/4" x 30" rebar set flush
- 1" iron pipe found unless noted otherwise

Tie bearings are Langlade County Coordinate system grid bearings.

From stone monument found to existing RR spike = N 59°40' E, 2.88'

Field book FB4-134



○ = corner perpetuated

The Southeast corner of Section 16, T. 33 N., R. 9 E., Langlade County, WI

I, David E. Tlusty, Registered Land Surveyor, as Langlade County Surveyor, certify that the corner location on this record was determined by me and that this U.S. Public Land Survey Monument Record is correct to the best of my knowledge and belief.

Index No.

N13 33-09

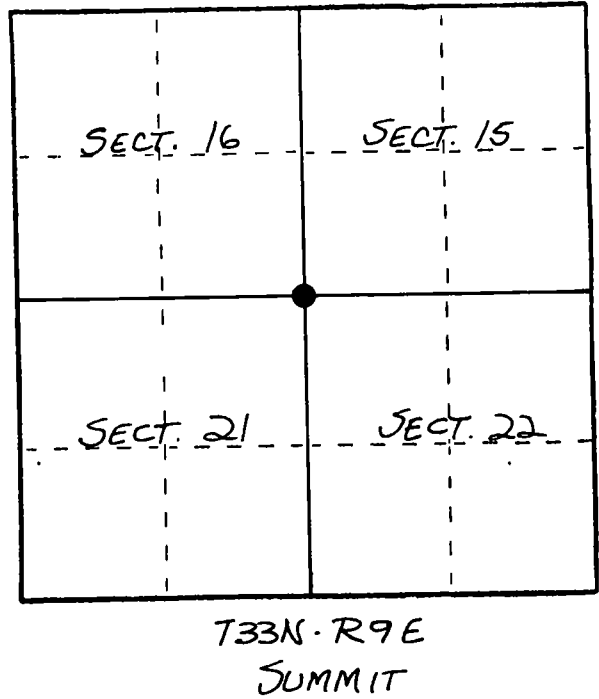
# U. S. PUBLIC LAND SURVEY MONUMENT RECORD

**INSTRUCTIONS:** This record shall show the location of the corner and shall include all of the following nine elements (a through i).

(a) Identify the corner by reference to the U.S. public land survey system.

○ = Corner monument restored.

ORIGINAL CORNER ESTABLISHED BY  
H.C. FELLOWS IN SEPT. 1860.

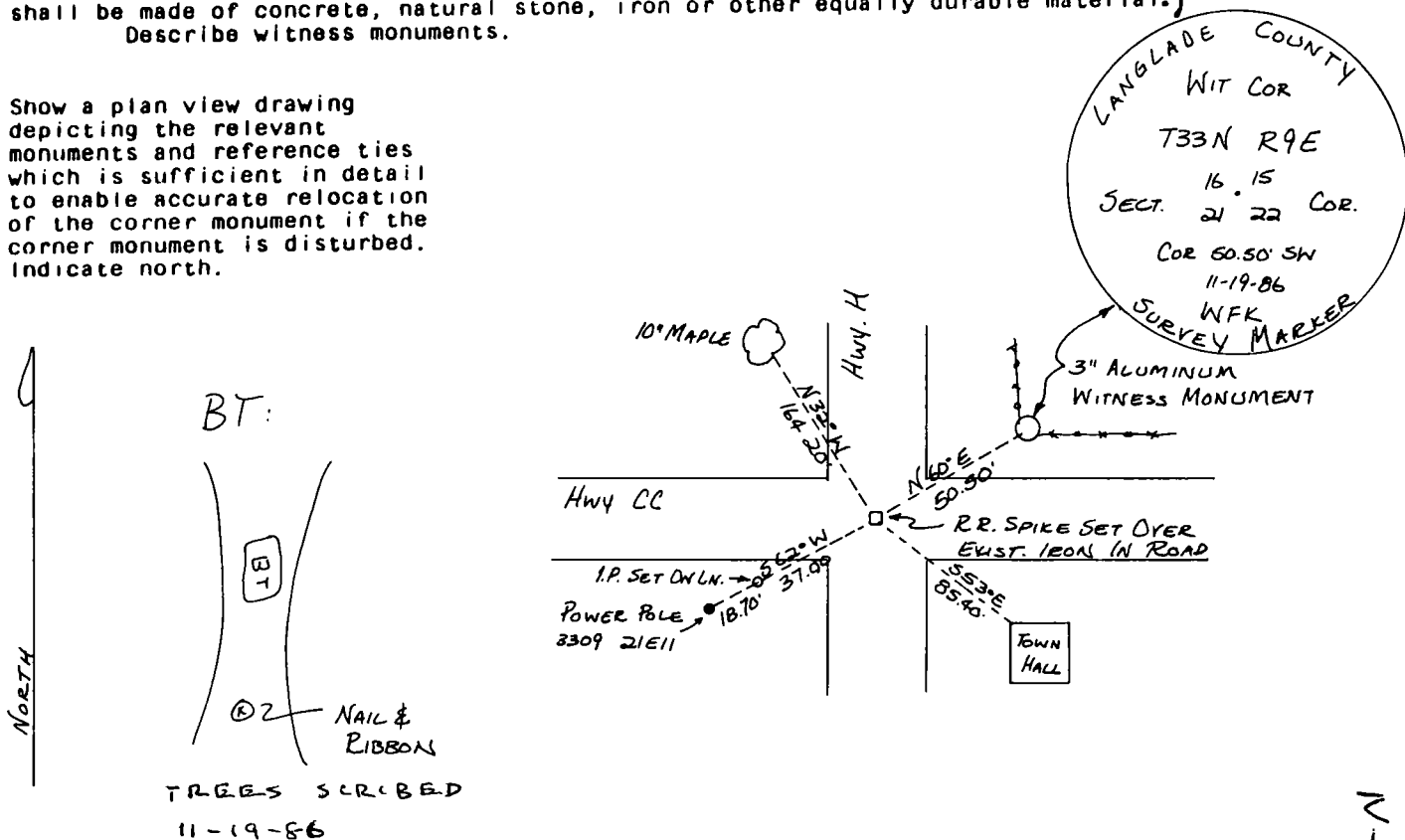


(b) Describe any record evidence, monument evidence, occupational evidence, testimonial evidence or any other material evidence you considered, and whether the monument was found or placed.

CORNER REESTABLISHED FROM IRON PIPE EVIDENCE LOCATED IN ROAD INTERSECTION.  
IRON PROBABLY SET BY M. HUTCHINSON IN 1930'S - NOTES MISSING  
SET NEW WITNESS MONUMENTS.

(c) In the plan view drawing below, provide reference ties to at least 4 witness monuments, or, if the location is within a municipality, to at least 2 witness monuments. (Witness monuments shall be made of concrete, natural stone, iron or other equally durable material.) Describe witness monuments.

(d) Show a plan view drawing depicting the relevant monuments and reference ties which is sufficient in detail to enable accurate relocation of the corner monument if the corner monument is disturbed. Indicate north.



(e) Describe any material discrepancy between the location of the corner as restored or reestablished and the location of that corner as previously restored or reestablished by distance and direction. Show the discrepancy on the plan view drawing under (d), above. Show the distances between the corner as previously restored or reestablished and (1) the corner as restored or reestablished, and (2) to at least 2 of the witness monuments shown on the drawing in (d), above.

NONE

(f) Was the corner restored through acceptance of (1) an obliterated evidence location, or, (2) a found perpetuated location?

(2)

(g&h) Was the corner reestablished through lost corner proportionate methods? If so, show the method, including the directions and distances to other public land survey corners used as evidence or used for proportioning in determining the corner location?

No

(1) I, WILLIAM F. KELLY R.L.S. 1098  
(type or print name) certify that the corner location shown on this record was determined by me or under my direction and control and that this U.S. Public Land Survey Monument Record is correct and complete to the best of my knowledge and belief.

William F. Kelly  
Signature

12-11-86  
Date

