

LANGLADE COUNTY U.S. PUBLIC LAND CORNER RESTORATION

The quarter corner common to Sections 14 & 15, T. 33 N., R. 9 E., Langlade County, WI.

Corner was: (check all that apply)

4330915 2000

- Restored through acceptance of an obliterated evidence location.
- Restored through acceptance of a found perpetuated location.
- Determined to be lost and re-established through proportionate methods.
Show bearings and distances to PLSS corners used for proportioning, and show original distances).
- Restored/recovered/re-established in a location that differs from a previously established position.
(Show difference in plan view below).
- Check here if additional information is shown on the reverse side of this form.

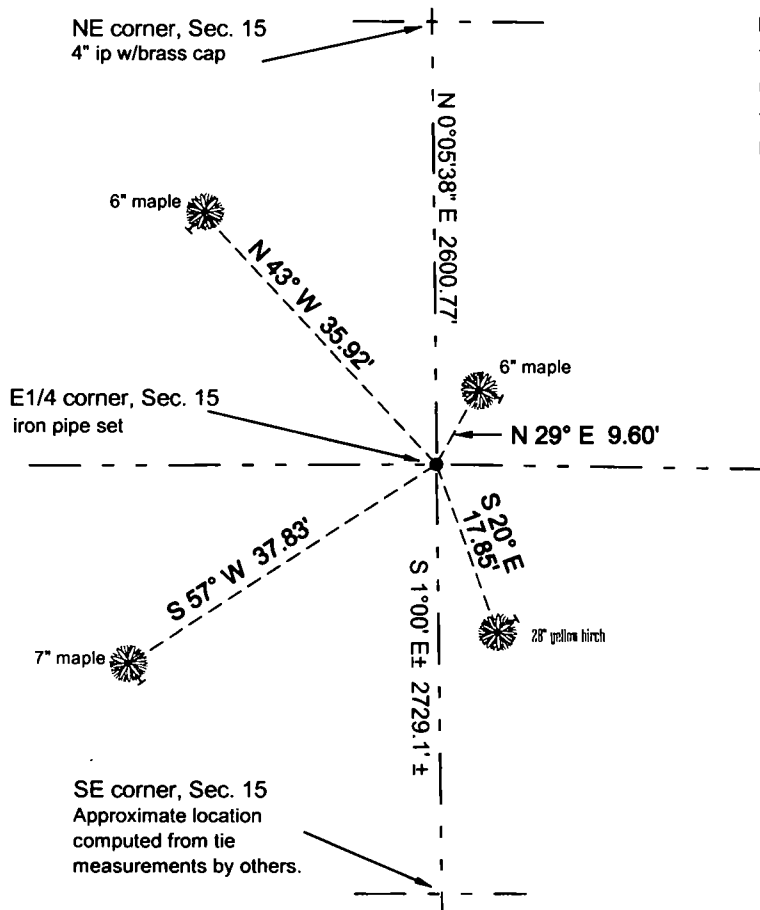
Describe record evidence, recovered physical evidence, occupational evidence, testimonial evidence and all other evidence considered in the recovery/restoration of the corner.

The original corner was established in 1860 by Hiram C. Fellows. Original bearing trees: spruce, 6", S18E, 17 links and a birch, 8", N86W, 8 links. In June, 1936, Clyde H. Parker, ran south between sections 14 & 15: "S 0°07' W, 2600.77 ft. to the 1/4 corner." He said "This 1/4 corner was marked with a squared wooden stake witnessed by an old scribe on an 8" Birch and a blaze on a 16" Birch. We scribed the 16" Birch and placed a new stake at the 1/4 corner scribing it 1/4S." 10/05/12 D. Tlusty, Ross Jacobsen search again for old post evidence off a 24" yellow birch that I believe is the 16" birch mentioned by Parker. After not finding anything, I reset the corner by using Parkers distance off the birch and his distance from the section corner to the north. I set the monument described below.

Physical description of the monument set:

I set a 1" x 30" iron pipe with 2" aluminum cap flush with the ground.
I set a white vinyl sign post, 0.5' north of the corner monument.

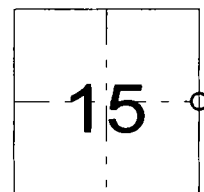
Describe the accessories used to perpetuate the corner. Include a plan view drawing and accessories found/set. Describe measuring point on bearing trees. Show any topographic features that would aid in future recovery of the corner.



LEGEND

- 1" iron pipe with alum. cap set
- Bearings magnetic with hand compass
- Ties measured to an aluminum nail in a side blaze on the trees shown.
- Trees have BT signs and blaze, painted blue facing the corner.

Field book FB24-17



○ = corner perpetuated
The Quarter corner to Sections 14 & 15, T. 33 N., R. 9 E., Langlade County, WI

I, David E. Tlusty, Registered Land Surveyor, as Langlade County Surveyor, certify that the corner location on this record was determined by me and that this U.S. Public Land Survey Monument Record is correct to the best of my knowledge and belief.

Index No. L17 33-09