

CERTIFIED LAND CORNER RESTORATION

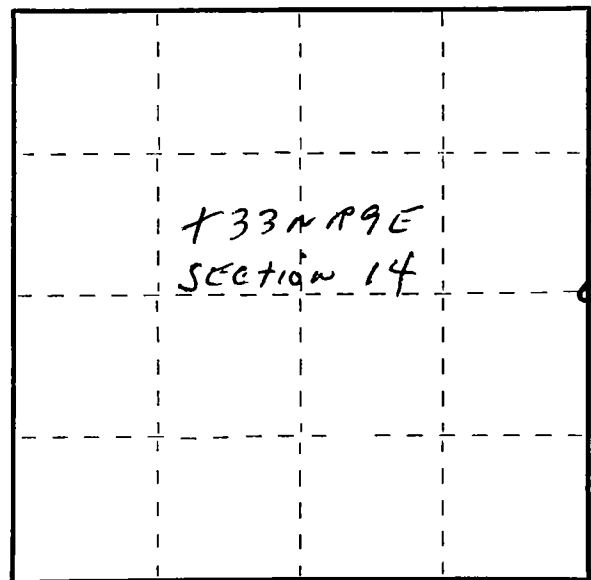
Index No. 4-21

State of Wisconsin }  
County of Langlade } ss.

I Raymond J. Hallisy, do hereby  
certify that on the 16th day  
of June 19 77, I found  
evidence of the ~~XXXXXX~~ 1/4  
corner of Section 13 & 14  
Township 33, North, Range  
9E, Fourth Principal Meridian,  
as described hereon; and that from this evidence  
I established a new monument and accessories  
as described hereon to perpetuate the original  
location of this corner.

Resident witnesses:

.....  
.....  
.....



○ = Corner monument restored.

History of original corner establishment:

Corner set in the 1930 resurvey

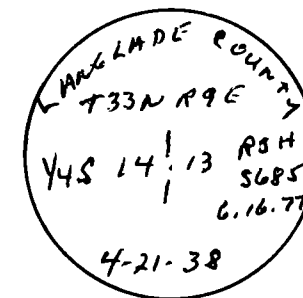
Description of corner evidence found:

4" pipe with brass cap.

Description of monument and accessories I established to perpetuate the original location of this corner.

New BT's

- 10" Red Maple N26W 14.8 Ft.
- 10" Hard Maple N71W 9.4 Ft.
- 12" Hard Maple S22W 28.2 Ft.



Dated at Argo, Wis., this 16th day of June, 19 78.

Signature Raymond J. Hallisy Title Land Surveyor Registration No. S685  
(County Surveyor, Registered Land Surveyor, or other duly authorized official)

Office of Register of Deeds, County of ....., I hereby certify that the within  
instrument was filed in this office for record on the ..... day of ....., 19.....  
at ..... o'clock ..... M.

.....  
(Register of Deeds)

By.....Deputy