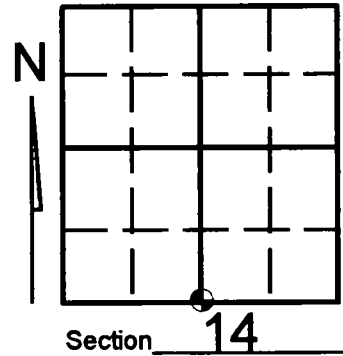


# U.S. PUBLIC LAND SURVEY MONUMENT RECORD

Note: This form is intended and designed to fulfill all requirements of Wisconsin Administrative Code, Chapter A-E 7.08 U.S. Public Land Survey Monument Record (3)(a)(b)(c)(d)(e)(f)(g)(h)(i). An additional sheet may be added if necessary to conform with said requirements.

(a) Corner location: Township 33 North *43309140620*  
 Range 09 East/West

Town/City/Village SUMMIT  
 County LANGLADE



(b) (f) (g) (h) Description of monument found at this corner and if it was accepted, state all evidence (material, testimonial, occupational, plats, records, other monuments) used as a basis for accepting. If not accepted or if nothing was found, state evidence used as basis for establishing location. If reestablished through lost corner proportionate methods, indicate all monuments, distances and directions used to establish. Indicate type of monument found or set and sign post.

- Gov't- Set 1/4 post N89°10'00"W, 40.06 chains from southeast section corner of 14 and made the following B.T.'S: cedar, 14", N10°W, 46 links; cedar, 10", S23°W, 25 links.
- 01/27/61- Ripco surveyors found wood post and cedar bearing tree, 10" S27°W, 24 links and made the following B.T.'S: ash, 5", N66°W, 40.5 links, 4" ash, N34°E, 30.25 links, 5" ash, N87°E, 38 links.
- 09/29/04- Kevin Bixby found 2" x 4' stamped Ripco monument lying down in swamp. Reset monument by standing monument up vertically and measured to two existing bearing trees from Ripco as shown below. Left monument in place as distances checked with Ripco's documentation from 1961. Ripco's distance to the southeast corner of section 14 per map of survey is 39.095 chains versus Gov't. of 40.06 chains.

(c) (d) (e) Plan view of corner with ties to at least 4 witness monuments. If in disagreement with previously established corner, show the distances between the two corners and also indicate the ties to the disputed corner.

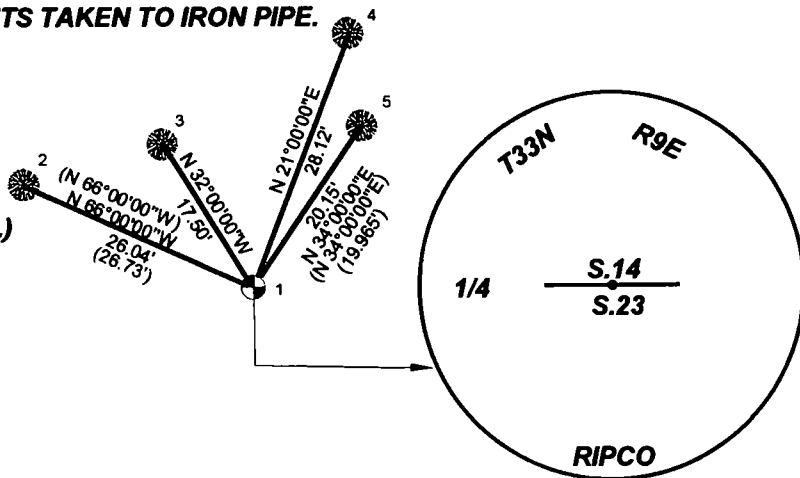
**BEARINGS TAKEN WITH HANDHELD MAG. COMPASS.  
 WHITE PLASTIC SIGN POST 2' SOUTH OF MONUMENT.  
 MONUMENT PROJECTS +2' ABOVE SWAMP GRADE.  
 MEASUREMENTS TAKEN TO IRON PIPE.**

SCALE: 1" = 20'

**LEGEND**

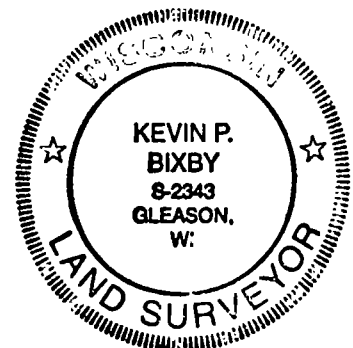
- 1- EXISTING 2" CAPPED I.P.
- 2- SET 1" X 24" I.P. BY 12" ASH (EXISTING B.T. AND TAG TO I.D. COR.)
- 3- SET 1" X 24" I.P. BY 5" BALSOM
- 4- SET 1" X 24" I.P. BY 8" ASH
- 5- SET 1" X 24" I.P. BY 14" ASH (EXISTING B.T.)

( ) RIPCO MEASUREMENTS



(i) I, KEVIN P. BIXBY

(type or print name) certify that the corner location on this record was determined by me or under my direction and control and that this U.S. Public Land Survey Monument Record is correct and complete to the best of my knowledge and belief.



Index No. 119

*Kevin P. Bixby* 10/23/04  
 Signature Date

Stamp