

CERTIFIED LAND CORNER RESTORATION

Index No. N-21

State of Wisconsin }  
County of Lansdale } ss.

History of original corner establishment:

Corner set in the 1930 resurvey.

I Raymond J. Hallisy, do hereby certify that on the 7th day of April, 1979, I found evidence of the Section corner of 13, 14, 23 & 24 Township 33, North, Range 9E, Fourth Principal Meridian, as described hereon; and that from this evidence I established a new monument and accessories as described hereon to perpetuate the original location of this corner.

Description of corner evidence found:

4" pipe with brass cap  
BT's

20" Yellow Birch T38E 15' (dead)

22" Yellow Birch S54W 18' 10"

Slashing north of line

Resident witnesses:

Description of monument and accessories I established to perpetuate the original location of this corner.

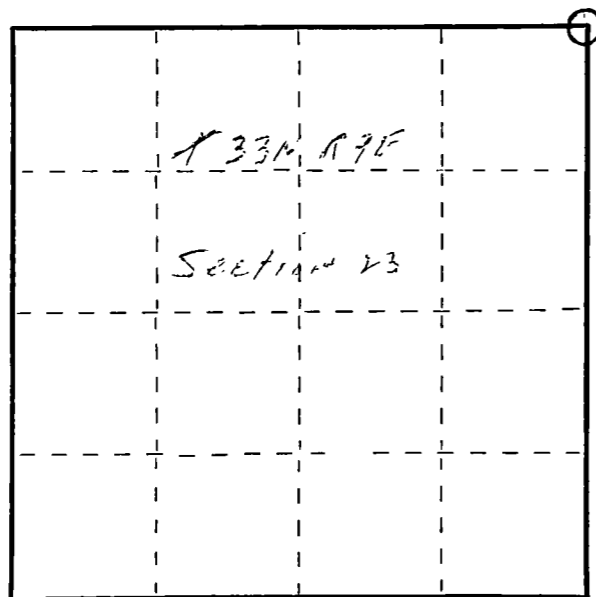
New BT's

16" Red Maple S14W 44' 7"

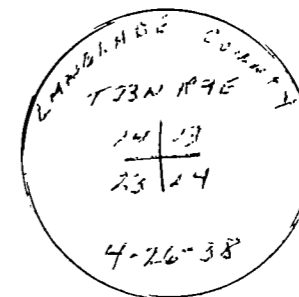
16" Red Maple S41W 59'

10" Red Maple S44E 16' 3"

FORM 985 H. C. MILLER CO. MILWAUKEE



○ = Corner monument restored.



Dated at Antigo, Wis., this 7th day of April, 1979.

Signature Raymond J. Hallisy Title Reg. Surveyor Registration No. S-685  
(County Surveyor, Registered Land Surveyor, or other duly authorized official)

Office of Register of Deeds, County of \_\_\_\_\_, I hereby certify that the within instrument was filed in this office for record on the \_\_\_\_\_ day of \_\_\_\_\_, 19\_\_\_\_ at \_\_\_\_\_ o'clock \_\_\_\_\_ M.

(Register of Deeds)

By \_\_\_\_\_ Deputy