

CERTIFIED LAND CORNER RESTORATION

Index No. N-22

State of Wisconsin }
County of Lanlade } ss.

I Raymond J. Hallisy, do hereby certify that on the 16th day of June, 1977, I found evidence of the W 1/16 corner of Section 13 & 24 Township 33, North, Range 9E, Fourth Principal Meridian, as described hereon; and that from this evidence I established a new monument and accessories as described hereon to perpetuate the original location of this corner.

History of original corner establishment:

Corner set in the 1930 re survey

Description of corner evidence found:

Found wood post standing, marked S24 S13 1/8
Location poster 3 paces west on Elm tree.

Resident witnesses:

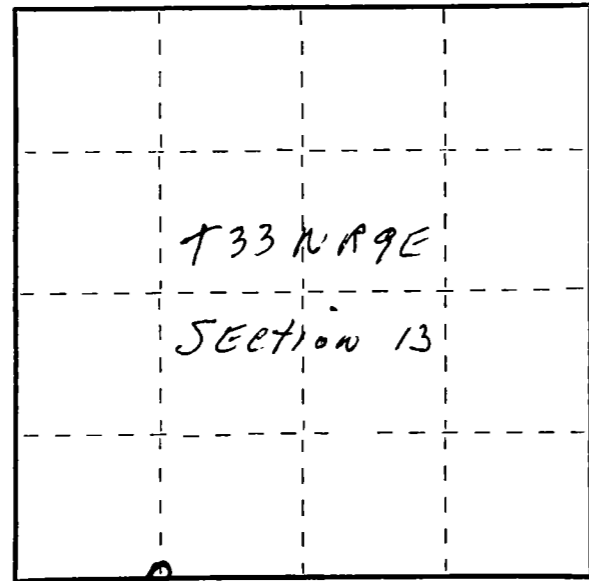
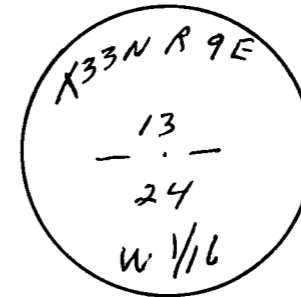
.....
.....
.....

Description of monument and accessories I established to perpetuate the original location of this corner.

Set $1\frac{1}{2}$ " iron pipe with brass cap.

New BT's

5" Spruce N17E 3.9 Ft.
10" Red Maple N80E 12.3 Ft.



○ = Corner monument restored.

Dated at Antigo, Wis., this 16th day of June, 1977

Signature Raymond J. Hallisy Title Land Surveyor Registration No. 5685
(County Surveyor, Registered Land Surveyor, or other duly authorized official)

Office of Register of Deeds, County of, I hereby certify that the within instrument was filed in this office for record on the day of, 19..... at o'clock M.

.....
(Register of Deeds)

By..... Deputy

FORM 985 H. C. MILLER CO., MILWAUKEE