

CERTIFIED LAND CORNER RESTORATION

Index No. H-25

State of Wisconsin }  
County of LANGLADE } ss.

I, RAYMOND J. HALLISY, do hereby certify that on the 2 day of AUGUST, 1980, I found evidence of the SOUTH 1/16 corner of SEC 12 Township 33 N 9 E, North, Range as described hereon; and that from this evidence I established a new monument and accessories as described hereon to perpetuate the original location of this corner.

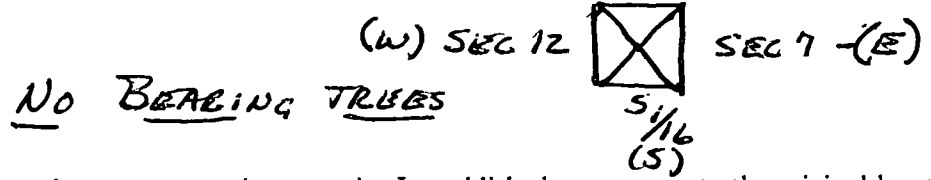
Resident witnesses:

S. BARGANDER  
H. BOULBANNALS

History of original corner establishment:  
1937-38 RESURVEY PROJECT  
OF T33N R9E BY DA HUNTZ

Description of corner evidence found:

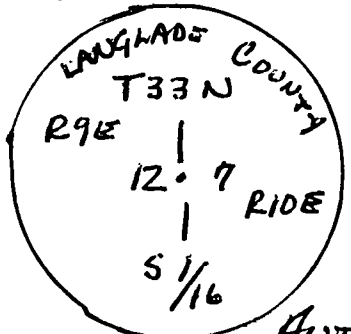
4" SQUARE POST IN PLACE - BRUSHED OUT LINE  
SCRIBED (N) NORTH & SOUTH CORNER  
IN CENTER OF CUT OUT LINE



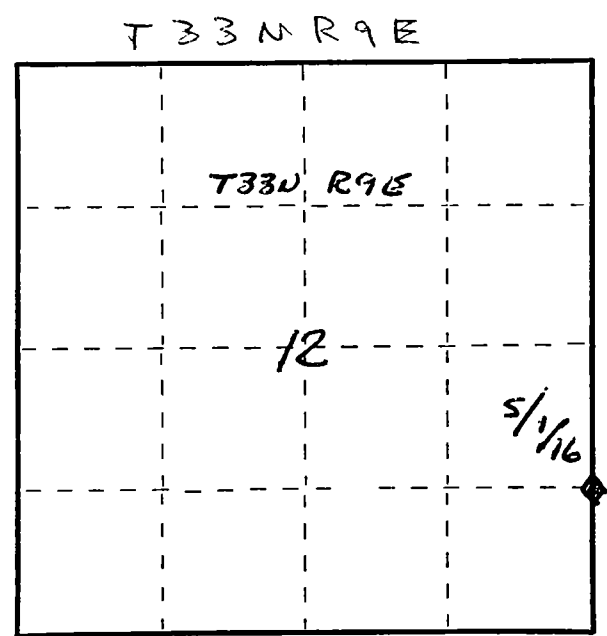
NO BEARING TREES

Description of monument and accessories I established to perpetuate the original location of this corner.

REPLACE WOOD POST WITH 2" IRON PIPE PLUS BRASS CAP - WOOD POST PLACED BY NEW CORNER



NEW BEARING TREES  
CEDAR 9" S62°W - 14.7 FEET  
CEDAR 9" S28°E - 22.7 FEET  
TAMARACK 5" S86°E - 11.4 FEET



○ = Corner monument restored.

Dated at AUTIGO, Wis., this 16 day of AUGUST, 1980

Signature Raymond J. Hallisy Title Reg. Land Surveyor Registration No. S-685  
(County Surveyor, Registered Land Surveyor or other duly authorized official)

Office of Register of Deeds, County of \_\_\_\_\_, I hereby certify that the within instrument was filed in this office for record on the \_\_\_\_\_ day of \_\_\_\_\_, 19\_\_\_\_ at \_\_\_\_\_ o'clock \_\_\_\_\_ M.

(Register of Deeds)

By \_\_\_\_\_ Deputy

FORM 985 M. C. MILLER CO., MILWAUKEE