

CERTIFIED LAND CORNER RESTORATION

Index No. G-19

State of Wisconsin }  
County of LANGLADE } ss.

I WILLIAM F. KELLY, do hereby certify that on the 8<sup>th</sup> day of DEC., 1981, I found evidence of the CENTER corner of SECTION 11 Township 33, North, Range 9 EAST, Fourth Principal Meridian, as described hereon; and that from this evidence I established a new monument and accessories as described hereon to perpetuate the original location of this corner.

Resident witnesses:

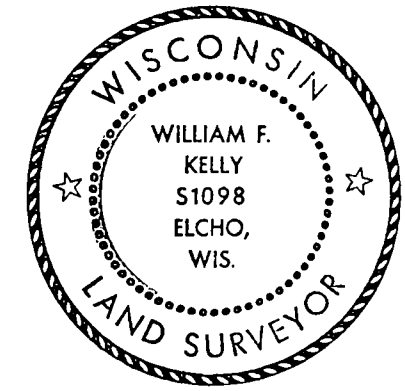
R. A. VOGEL

History of original corner establishment:

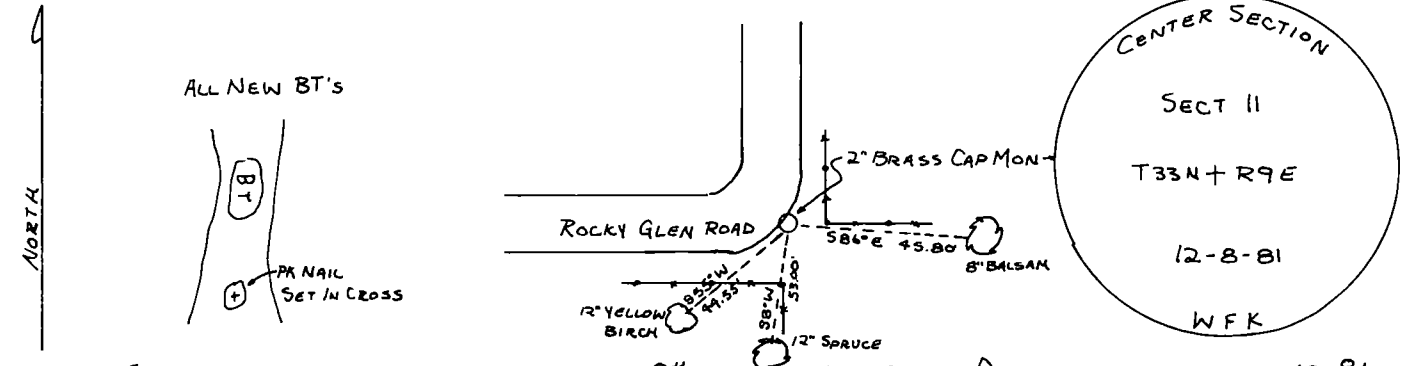
CORNER SET DURING 1938 RESURVEY BY THE CCC

Description of corner evidence found:

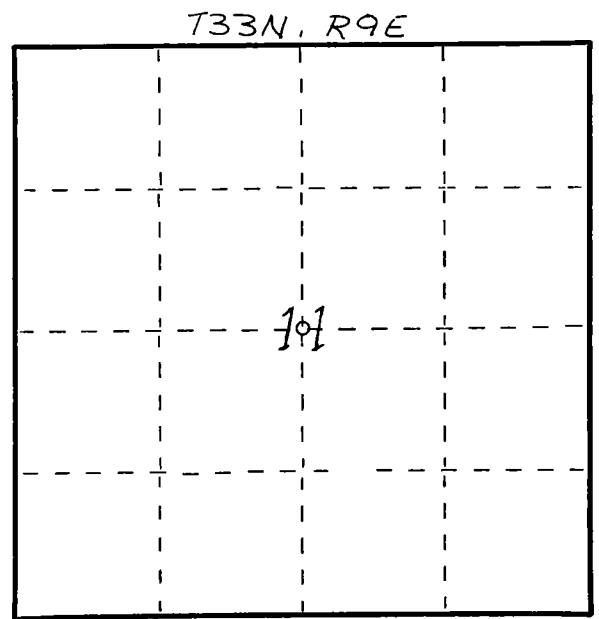
3/4" IRON PIPE, FOUND IN PLACE.  
REPLACED IRON PIPE WITH A 2" x 42"  
BLACK IRON PIPE WITH BRASS  
CAP MONUMENT.



Description of monument and accessories I established to perpetuate the original location of this corner.



FORM 985 H. E. MILLER CO., MILWAUKEE



○ = Corner monument restored.

Dated at ELCHO, Wis., this 8<sup>th</sup> day of DEC., 1981

Signature William F. Kelly Title COUNTY SURVEYOR Registration No. 1098  
(County Surveyor, Registered Land Surveyor, or other duly authorized official)

Office of Register of Deeds, County of \_\_\_\_\_, I hereby certify that the within instrument was filed in this office for record on the \_\_\_\_\_ day of \_\_\_\_\_, 19\_\_\_\_ at \_\_\_\_\_ o'clock \_\_\_\_\_ M.

(Register of Deeds)

By \_\_\_\_\_ Deputy