

U.S. PUBLIC LAND SURVEY MONUMENT RECORD

(Prepared and as required by S. A-E 7.08 WI Administrative Code)

Corner was: (check all that apply)

4330910 2000

- Restored through acceptance of an obliterated evidence location
- Restored through acceptance of a found perpetuated location
- Determined to be lost and reestablished through proportionate methods.
(Show bearings and distances to PLSS corners used for proportioning)
- Restored/recovered/reestablished in a location that differs from a previously established position. (Show difference in plan view below.)
- Check here if additional information is shown on the reverse side of this form

Describe record evidence, recovered physical evidence, occupational evidence, testimonial evidence and all other evidence considered in the recovery/restoration of corner.

1860 - Original Corner established by Hiram C. Fellows

Original BT: Sugar, 12', N86°W, 14 lks.

Original BT: Elm, 12', N73°E, 24 lks.

1898 - B.F. Dorr set stone for corner.

1938 - Hintz re-established this corner and set a 1" I.B., also set 4" B.C.I.P. witness monument.

1981 - W.F. Kelly found 4" B.C.I.P. witness monument, also found 1" I.B. at corner location. Marked 1 NBT and W.C.

2004 - Dean A. Williams found 4" B.C.I.P. witness monument, and Kelly's BT, Also found 1/2" I.R. bent over.

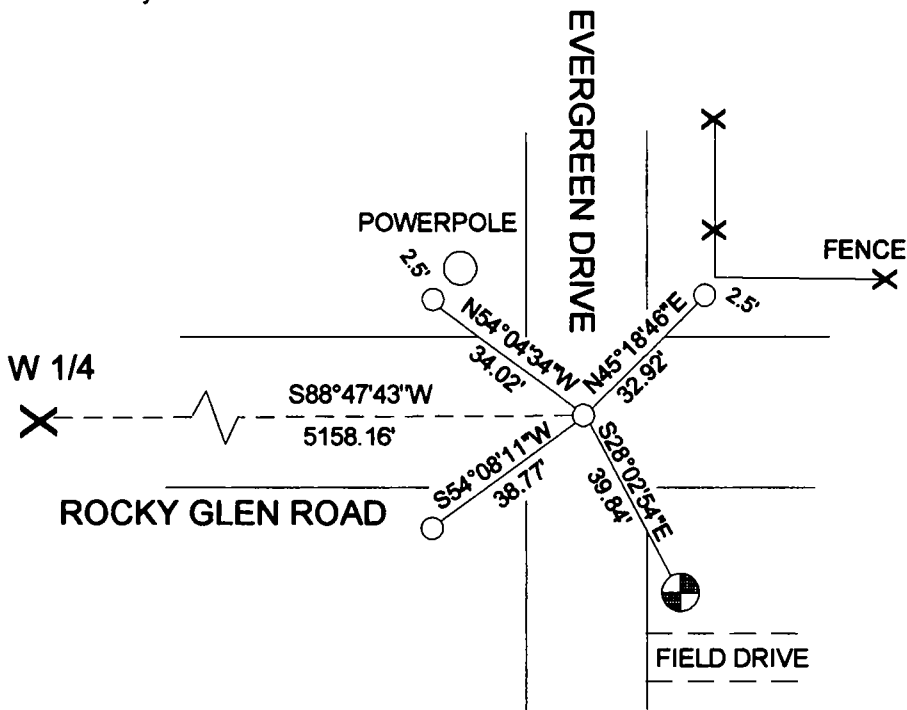
Dug out 1/2" I.R. Did not find stone or 1" I.B. and replaced with .75" x 30" I.R. .3' below road surface.

Accepted as best possible evidence of corner location.

Physical description of the monument set:

2004 - Dean A. Williams, Retied, and set 3/4"x30" I.R. .3' below road surface.

Describe the accessories used to perpetuate the location of the corner. Include a plan view drawing and indicate accessories found/set. Describe measuring point on bearing trees. Show any topographic features that would aid in future recovery of the corner.

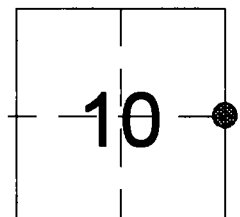


LEGEND

- SET .75" x 30" I.R. with
- FOUND 4" B.C.I.P. W.C.

BEARINGS REFERENCED AS SHOWN

The East 1/4 corner of Section 10
T.33N., R.9E.,
Langlade County, WI



● = Location of corner

I, Dean A. Williams RLS 2468, certify that the corner location shown on this record was determined by me or under my direction and control and that this U.S. Public Land Survey Record is correct and complete to the best of my knowledge and belief.

Dean Williams 8/16/04
Signature Date



INDEX NO. G17

CERTIFIED LAND CORNER RESTORATION

Index No. G-17

State of Wisconsin }
County of LANGLADE } ss.

I WILLIAM F. KELLY, do hereby certify that on the 8th day of DEC., 1981, I found evidence of the E. 1/4 corner of SEC. 10 Township 33, North, Range 9 EAST, Fourth Principal Meridian, as described hereon; and that from this evidence I established a new monument and accessories as described hereon to perpetuate the original location of this corner.

Resident witnesses:

R. A. VOGEL

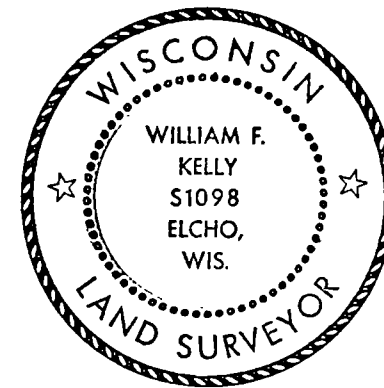
History of original corner establishment:

ORIGINAL CORNER ESTABLISHED BY
HIRAM C. FELLOWS IN SEPT-OCT, 1860.

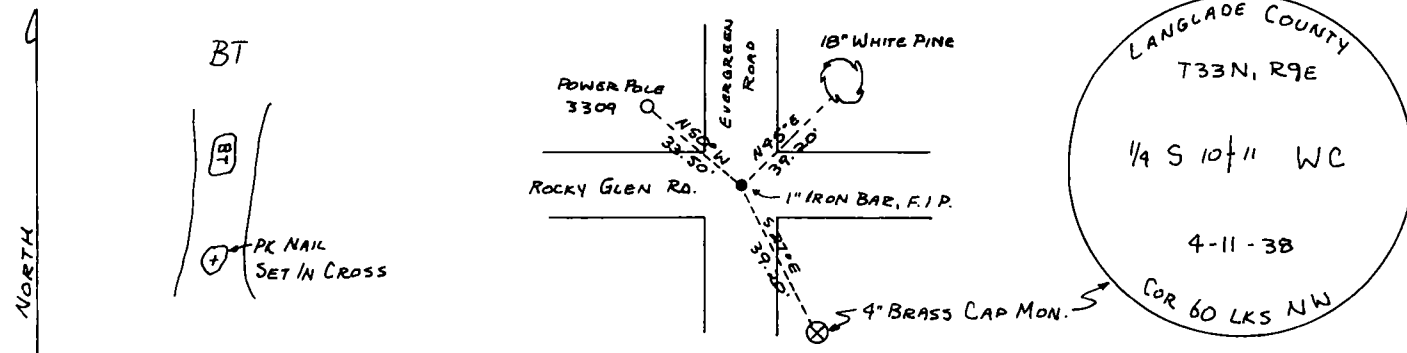
CORNER RE-ESTABLISHED IN 1938 RESURVEY
BY THE C.C.C.

Description of corner evidence found:

1" IRON BAR AND 4" BRASS CAP
WITNESS MONUMENT, FOUND
IN PLACE.
MARKED 1 NEW BT. AND
POWER POLE W.C.



Description of monument and accessories I established to perpetuate the original location of this corner.



Dated at ELCHO, Wis., this 8th day of DEC., 1981.

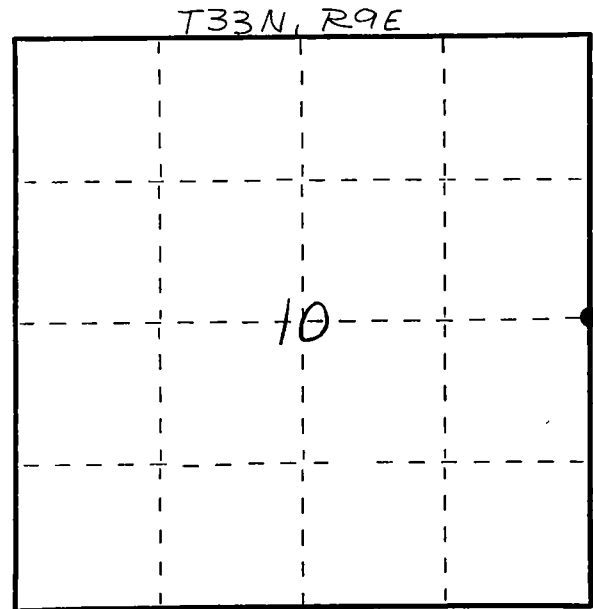
Signature William F. Kelly Title COUNTY SURVEYOR Registration No. 1098
(County Surveyor, Registered Land Surveyor, or other duly authorized official)

Office of Register of Deeds, County of _____, I hereby certify that the within instrument was filed in this office for record on the _____ day of _____, 19____ at _____ o'clock _____ M.

(Register of Deeds)

By _____ Deputy

FORM 985 H. C. MILLER CO., MILWAUKEE



○ = Corner monument restored.