

U.S. PUBLIC LAND SURVEY MONUMENT RECORD

(Prepared and as required by S. A-E 7.08 Wi Administrative Code)

Corner was: (check all that apply)

4330910 0020

- Restored through acceptance of an obliterated evidence location
- Restored through acceptance of a found perpetuated location
- Determined to be lost and reestablished through proportionate methods.
(Show bearings and distances to PLSS corners used for proportioning)
- Restored/recovered/reestablished in a location that differs from a previously established position. (Show difference in plan view below.)
- Check here if additional information is shown on the reverse side of this form

Describe record evidence, recovered physical evidence, occupational evidence, testimonial evidence and all other evidence considered in the recovery/restoration of corner.

1860 - Original Corner established by Hiram C. Fellows

Original BT: tamarac, 12", N32°E, 16 lks.

Original BT: white pine, 10", S60°W, 19 lks.

1898 - B. F. Dorr set NBT's: Tamarac 5", S54°W, 37.5 lks., Tamarac 6", S45°W, 38.5 lks.

1903 - Webley set grey boulder and NBT's: Tamarac 7", S27°E, 42 lks., Tamarac 7", S27.5°W, 113.75 lks.

1936 - Parker 'junior civil engineer'; measured 5016.57 feet total between sections 10-15, noted a blazed tree at 265 feet too far West for half distance and ignored blaze, set corner at half distance.

1938 - Hintz measured N90°W, 35.50 chains, and S89°34'E, 40.58 chains, set 4" B.C.I.P. Witness Corner 30 Inks. South.

1980 - Raymond Hallisy found 4" B.C.I.P. Witness Corner 30 lks. South and tied the witness monument to 3 BT's.

2004 - Dean A. Williams found Raymond Hallisy 3 BT's, all dead. But found the 4" B.C.I.P. uprooted and leaning loose.

Reset W.C. down till 1' projecting vertically. Held W.C. distance north and prorated east and west distances.

In the post hole for monument at 3 feet deep I hit a large grey stone leaning south.

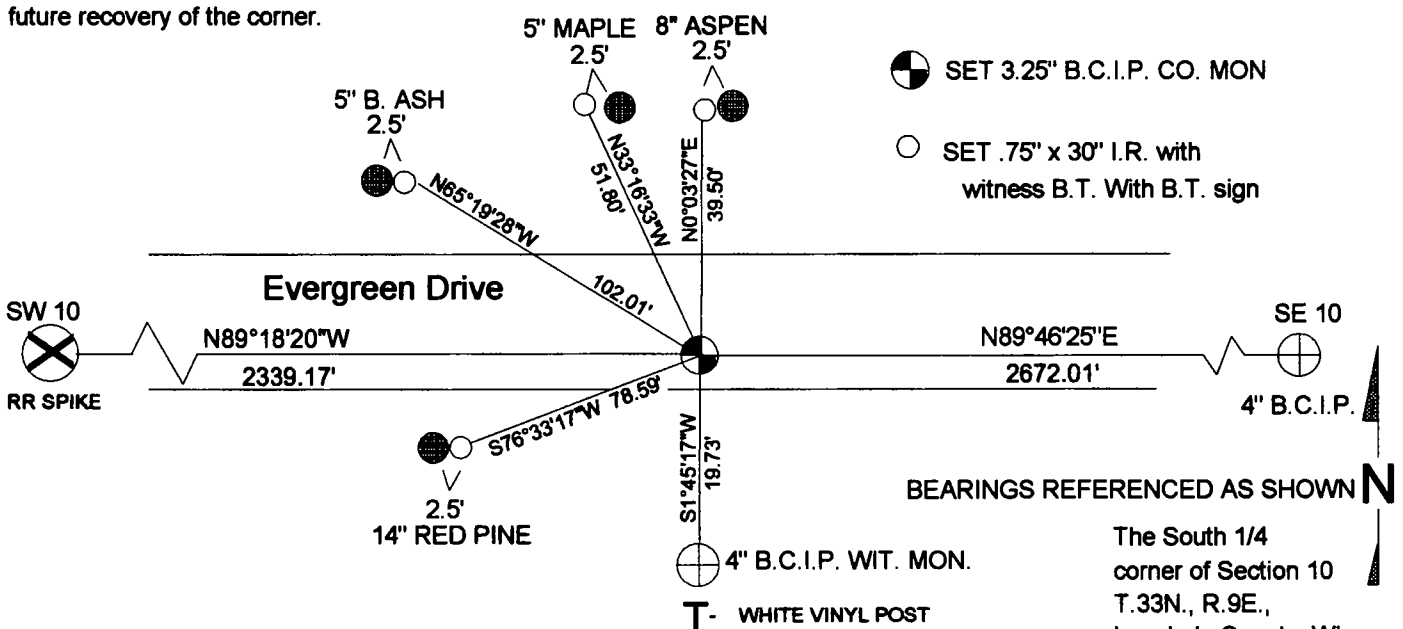
Accepted as best possible evidence of corner location.

Physical description of the monument set:

2004 - Dean A. Williams Set 3.25" Brass Capped 2.375" x 30" iron pipe flanged bottom County Monument for Corner at 6" below gravel road surface, at south edge of gravel.

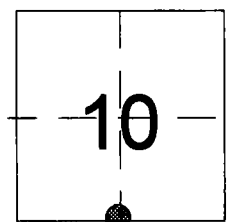
Retied and accepted as best possible evidence of corner location.

Describe the accessories used to perpetuate the location of the corner. Include a plan view drawing and indicate accessories found/set. Describe measuring point on bearing trees. Show any topographic features that would aid in future recovery of the corner.



I, Dean A. Williams RLS 2468, certify that the corner location shown on this record was determined by me or under my direction and control and that this U.S. Public Land Survey Record is correct and complete to the best of my knowledge and belief.

Dean Williams 8/16/04
 Signature Date



● = Location of corner

INDEX NO. 715

CERTIFIED LAND CORNER RESTORATION

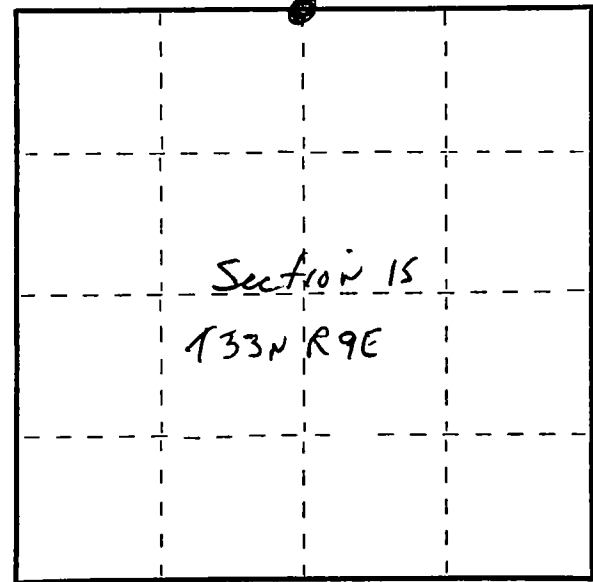
Index No. J-15

State of Wisconsin }
County of Lan glade } ss.

I R. J. Hallisy, do hereby certify that on the 4th day of May, 1980, I found evidence of the 1/4 corner of Section 10 & 15 Township 33, North, Range 9 E, Fourth Principal Meridian, as described hereon; and that from this evidence I established a new monument and accessories as described hereon to perpetuate the original location of this corner.

Resident witnesses:

.....
.....
.....



○ = Corner monument restored.

History of original corner establishment:

Corner set in the 1930 resurvey.

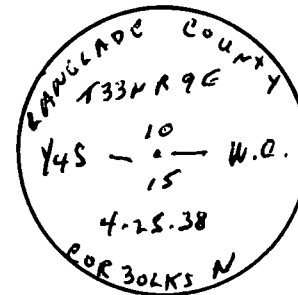
Description of corner evidence found:

4 iron pipe with brass cap. on edge of town road. W.C.

Description of monument and accessories I established to perpetuate the original location of this corner.

New PT's to Witness Corner

7" Balsam S58P ~~11'1"~~
16" Red Maple S40E 21'1"
16" Yellow Birch S16W 12'5"



Dated at Ontario, Wis., this 4th day of May, 1980.

Signature Raymond J. Hallisy Title Land Surveyor Registration No. S-685
(County Surveyor, Registered Land Surveyor, or other duly authorized official)

Office of Register of Deeds, County of Lan glade, I hereby certify that the within instrument was filed in this office for record on the 4th day of May, 1980 at 10 o'clock A.M.

.....
(Register of Deeds)

By.....Deputy

FORM 985 M. C. MILLER CO., MILWAUKEE