

U.S. PUBLIC LAND SURVEY MONUMENT RECORD

(Prepared and as required by S. A-E 7.08 Wi Administrative Code)

Corner was: (check all that apply)

43309092000

- Restored through acceptance of an obliterated evidence location
- Restored through acceptance of a found perpetuated location
- Determined to be lost and reestablished through proportionate methods.
(Show bearings and distances to PLSS corners used for proportioning)
- Restored/recovered/reestablished in a location that differs from a previously established position. (Show difference in plan view below.)
- Check here if additional information is shown on the reverse side of this form

Describe record evidence, recovered physical evidence, occupational evidence, testimonial evidence and all other evidence considered in the recovery/restoration of corner.

1860 - Original Corner established by Hiram C. Fellows
 Original BT: Tamarack, 10', S35°W, 16 lks.
 Original BT: Tamarack, 12', S20°E, 13 lks.

1898 - B.F. Dorr measured 78.04 chains to E 1/4 corner.

1962 - Paul M. Johnson DOT Engineer, re-established this corner at intersection of roads, and set 2 8" conc. mon. with 3" brass caps magnetically West at 46.8' and 63.6'.




2004 - Dean A. Williams found 2 8" conc. mon. with 3" brass caps.
 Accepted straight line projection of 2 WC's as best possible evidence of corner location.

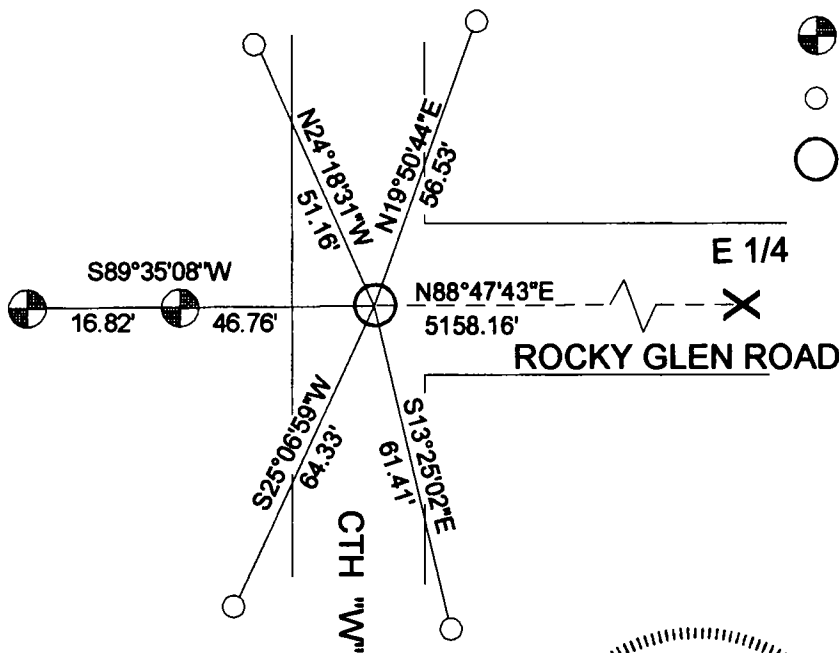
Physical description of the monument set:

2004 - Dean A. Williams, retied and set pk nail.

Describe the accessories used to perpetuate the location of the corner. Include a plan view drawing and indicate accessories found/set. Describe measuring point on bearing trees. Show any topographic features that would aid in future recovery of the corner.

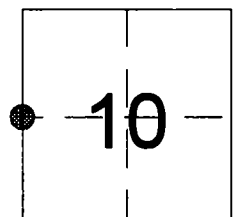
LEGEND

-  FOUND 3" B.C. SET IN 8" CONC.
-  SET .75" x 30" I.R. with
-  SET PK NAIL



BEARINGS REFERENCED AS SHOWN

The West 1/4 corner of Section 10 T.33N., R.9E., Langlade County, WI



 = Location of corner

I, Dean A. Williams RLS 2468, certify that the corner location shown on this record was determined by me or under my direction and control and that this U.S. Public Land Survey Record is correct and complete to the best of my knowledge and belief.

Dean Williams 8/16/04
 Signature Date



INDEX NO. G/13

PRESERVATION OF LANDMARKS

SECTION 59,635(7) WISCONSIN STATUTES

COUNTY LANGLADE

TOWN SUMMIT

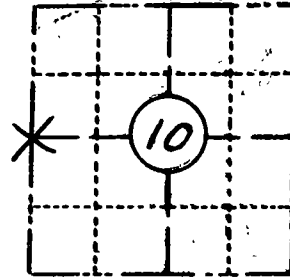
HIGHWAY COUNTY "H"

SECTION NO.'S 9 & 10

T. 33 N., R. 9 E.

TYPE OF LANDMARK 1/4 CORNER

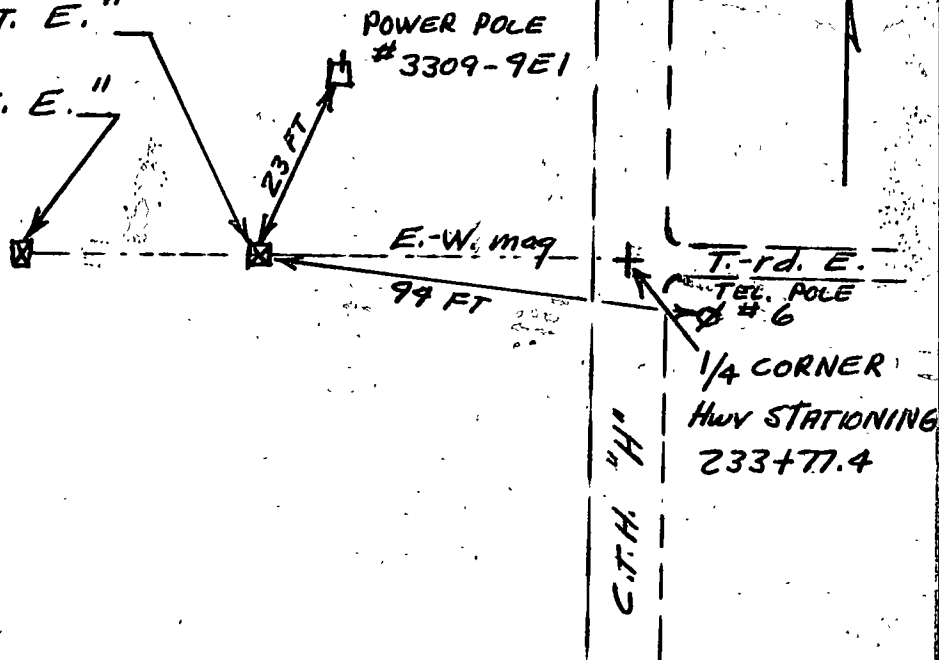
LOCATION INDICATED ON SKETCH X



LOCATION SKETCH

Brass cap set in concrete, stamped,
 "1/4, 9 + 10, 46.8 FT. E."

63.6 FT. E."



This space for copy of field notes or ties to the above described landmarks

Field notes or records filed in book no. 8615
 at the State of Wisconsin Hwy Commission office.
 City of Rhinalanda, Onanda County.
 Located or established by Paul M Johnson, 1962
 Title Engineer II

County Clerk's Office 18 County, Wis. } ss
 Received for record Sept 18, 1962

Copy sent to County Surveyor _____, 19____

County Clerk

G/13