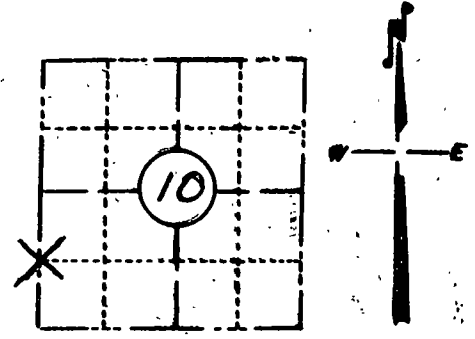
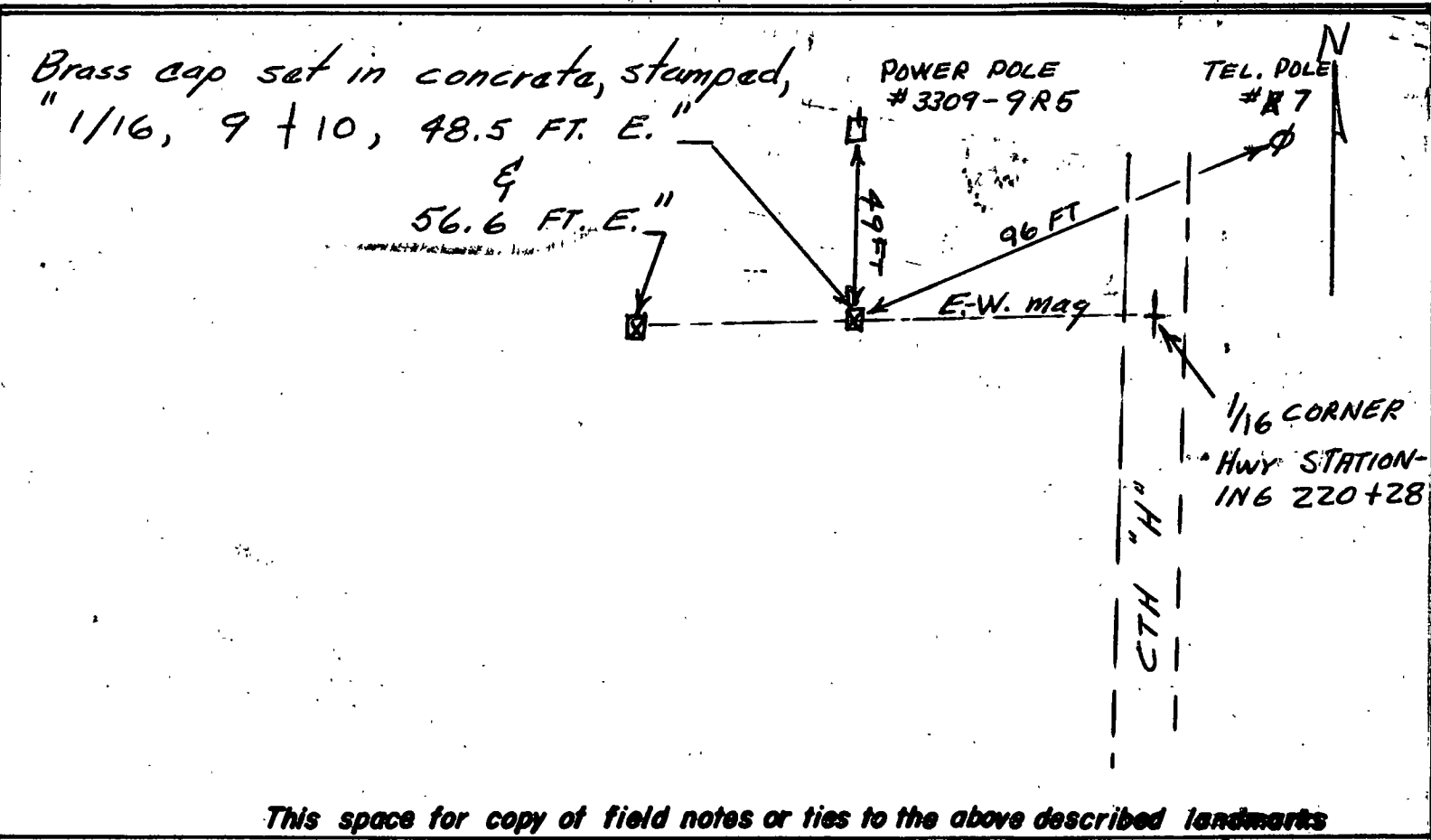


# PRESERVATION OF LANDMARKS

SECTION 59,635(7) WISCONSIN STATUTES  
 COUNTY LANGLADE  
 TOWN SUMMIT  
 HIGHWAY COUNTY "H"  
 SECTION NO.'s 9 & 10  
 T. 33 N., R. 9 E.  
 TYPE OF LANDMARK 1/16 CORNER  
 LOCATION INDICATED ON SKETCH X



LOCATION SKETCH



This space for copy of field notes or ties to the above described landmarks

Field notes or records filed in book no. 8615  
 at the State of Wisconsin Hwy Commission office.  
 City of Rhinelander Oneida County.  
 Located or established by Paul M Johnson, 1962  
 Title Engineer II

County Clerk's Office \_\_\_\_\_ County, Wis. } ss  
 Received for record Sept 18, 1964  
 Copy sent to County Surveyor \_\_\_\_\_, 19\_\_\_\_  
 \_\_\_\_\_  
 County Clerk

H 13