

CERTIFIED LAND CORNER RESTORATION

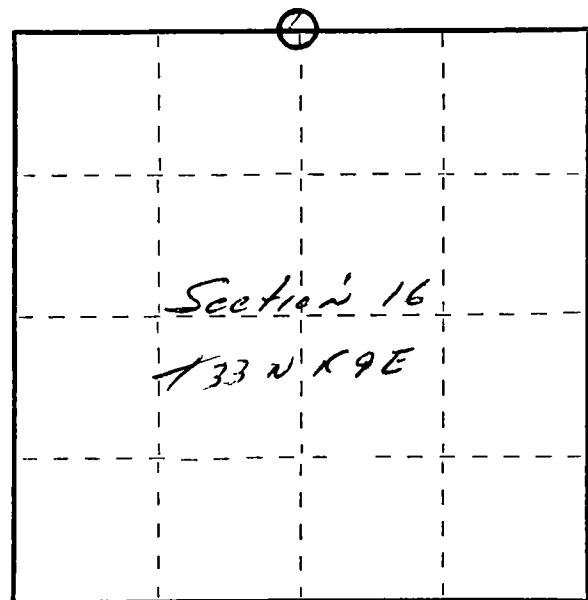
Index No. J-11

State of Wisconsin }  
County of Lanola } ss.

I Raymond Hallisy, do hereby certify that on the 24<sup>th</sup> day of August, 1974, I found evidence of the 1/4 corner of 9 & 16 Township 33, North, Range 9E, Fourth Principal Meridian, as described hereon; and that from this evidence I established a new monument and accessories as described hereon to perpetuate the original location of this corner.

Resident witnesses:

.....  
.....  
.....



○ = Corner monument restored.

History of original corner establishment:

1930 resurvey

Description of corner evidence found:

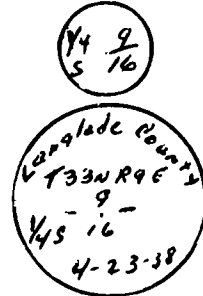
4" Brass cap  
1" pipe with cap

There are no notes in county courthouse for this corner

Description of monument and accessories I established to perpetuate the original location of this corner.

New BT's

12" Hand Maple N8°E 41 LKS  
10" Yellow Birch S90°E 33.4 LKS



Dated at Ap 190, Wis., this 24<sup>th</sup> day of August, 1974.

Signature Raymond Hallisy Title Reg. Land Surveyor Registration No. 5685  
(County Surveyor, Registered Land Surveyor, or other duly authorized official)

Office of Register of Deeds, County of \_\_\_\_\_, I hereby certify that the within instrument was filed in this office for record on the \_\_\_\_\_ day of \_\_\_\_\_, 19\_\_\_\_ at \_\_\_\_\_ o'clock \_\_\_\_\_ M.

.....  
(Register of Deeds)

By..... Deputy