

CERTIFIED LAND CORNER RESTORATION

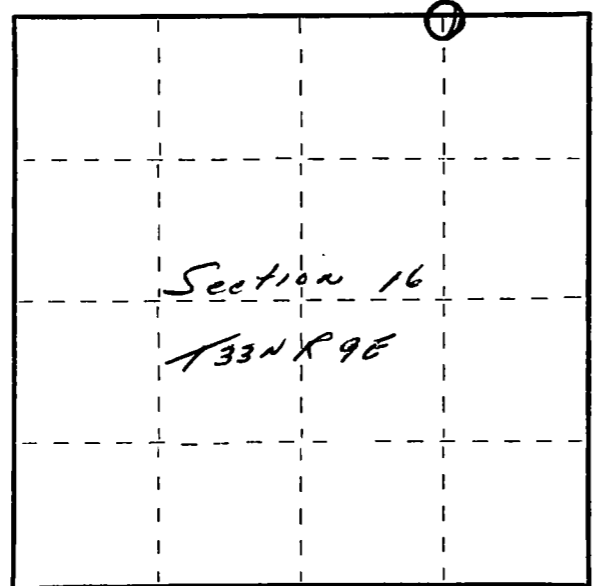
Index No. J-12

State of Wisconsin }
County of Lanola } ss.

I Raymond Hallisy, do hereby certify that on the 24th day of August, 1974, I found evidence of the E 1/6 corner of 9 1/6 Township 33, North, Range 9 E, Fourth Principal Meridian, as described hereon; and that from this evidence I established a new monument and accessories as described hereon to perpetuate the original location of this corner.

Resident witnesses:

.....
.....
.....



○ = Corner monument restored.

History of original corner establishment:

1930 Resurvey

Description of corner evidence found:

Found old stake down, point intact

Description of monument and accessories I established to perpetuate the original location of this corner.

Set 1 1/2" iron pipe with brass cap

New BT's

8" Hand Maple N23 1/2° W 23.1 LKS

8" Hand Maple S22 1/2° W 23.6 LKS



Dated at Antigo, Wis., this 24th day of August, 1974.

Signature Raymond Hallisy Title Co. Land Surveyor Registration No. 5-685
(County Surveyor, Registered Land Surveyor, or other duly authorized official)

Office of Register of Deeds, County of _____, I hereby certify that the within instrument was filed in this office for record on the _____ day of _____, 19____ at _____ o'clock _____ M.

.....
(Register of Deeds)

By..... Deputy