

LANGLADE COUNTY U.S. PUBLIC LAND CORNER RESTORATION

The Southeast corner of Section 9, T. 33 N., R. 9 E., Langlade County, WI.

Corner was: (check all that apply)

43309090000

- Restored through acceptance of an obliterated evidence location.
- Restored through acceptance of a found perpetuated location.
- Determined to be lost and re-established through proportionate methods.
Show bearings and distances to PLSS corners used for proportioning, and show original distances).
- Restored/recovered/re-established in a location that differs from a previously established position.
(Show difference in plan view below).
- Check here if addition information is shown on the reverse side of this form.

Describe record evidence, recovered physical evidence, occupational evidence, testimonial evidence and all other evidence considered in the recovery/restoration of the corner.

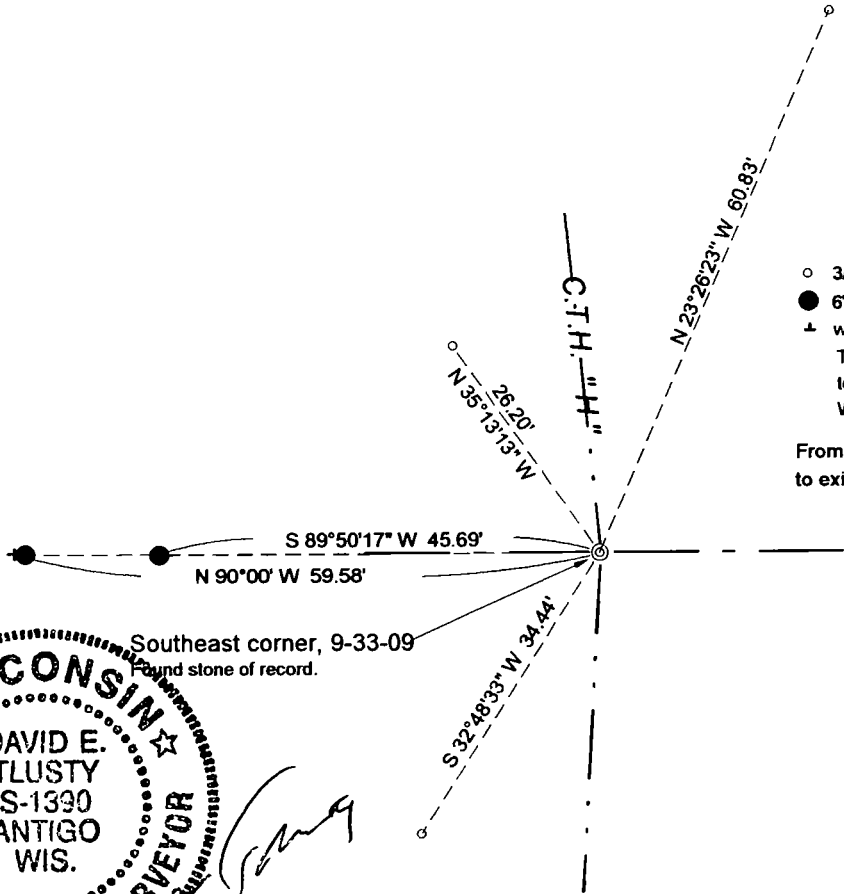
The original corner was established in 1860 by Hiram C. Fellows. Original bearing trees: birch, 10", N73°W, 20 links and a fir, 10", S83°E, 14 links. In the 1936 resurvey, the corner was described: "is marked with a large red field stone buried 3" below the surface of the road". A 1962 corner form by the State Highway commission shows ties to the corner, but does not give a physical description of the monument. 08/05/04 Dave Tlusty, Jason Thom found and short tied a RR spike found, then dug with a County backhoe. Down 3.7', found a large stone, about 6" x 6" on top, tapering larger, with a clear chiseled "X" on top. Accepted this stone as the best evidence of a previously perpetuated location of the corner.

Physical description of the monument set:

I left the existing stone in place. Set a Berntsen Deep-1 magnet at south edge of stone.

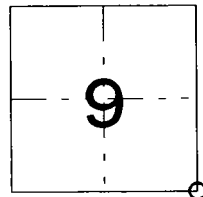
Describe the accessories used to perpetuate the corner. Include a plan view drawing and accessories found/set. Describe measuring point on bearing trees. Show any topographic features that would aid in future recovery of the corner.

Field book FB4-136

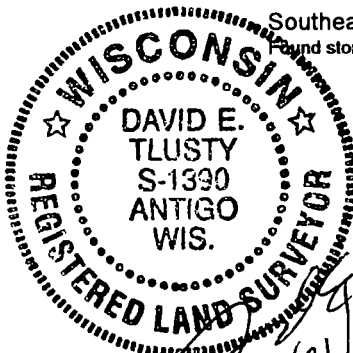


LEGEND

- 3/4" x 30" rebar set flush
 - 6" dia. conc post with brass cap, up 1±
 - ▲ white vinyl sign post set
- Tie bearings assumed and referenced to a line from the 1/4 corner to the West concrete mon. as bearing N 90° W.
- From stone monument found to existing RR spike = N 84°45' E, 0.36'



○ = corner perpetuated
The Southeast corner of Section 9, T. 33 N., R. 9 E., Langlade County, WI



[Handwritten signature]
3/31/09

I, David E. Tlusty, Registered Land Surveyor, as Langlade County Surveyor, certify that the corner location on this record was determined by me and that this U S Public Land Survey Monument Record is correct to the best of my knowledge and belief.

Index No.

J 13 33-09

PRESERVATION OF LANDMARKS

SECTION 59,635(7) WISCONSIN STATUTES

COUNTY LANGLADE

TOWN SUMMIT

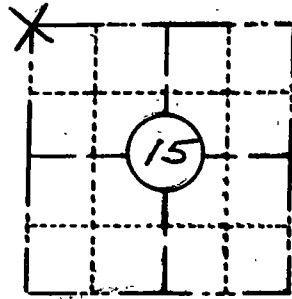
HIGHWAY COUNTY "H"

SECTION NO.'s 9, 10, 15, & 16

T. 33 N., R. 9 E.

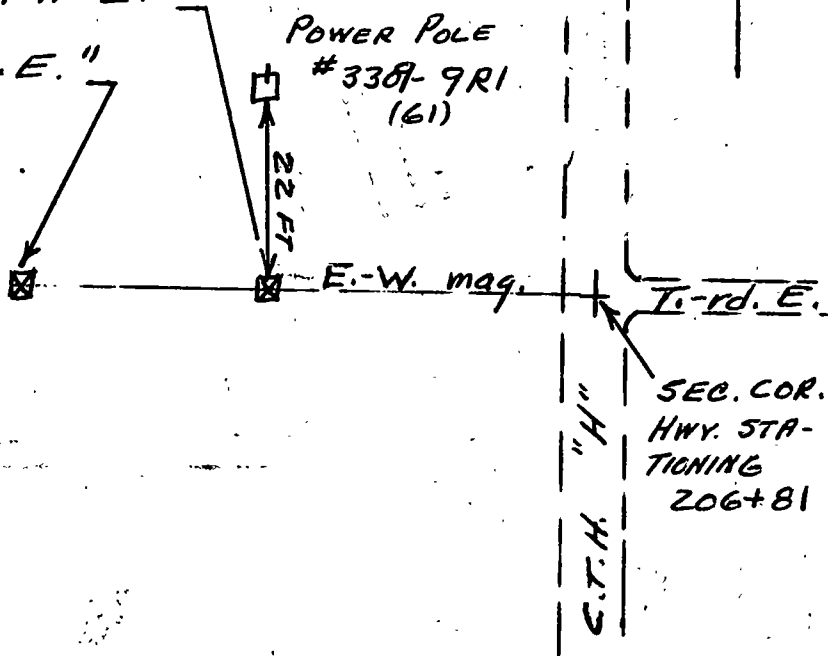
TYPE OF LANDMARK SECTION CORNER

LOCATION INDICATED ON SKETCH X



LOCATION SKETCH

Brass cap set in concrete, stamped,
 "SEC. COR. 16 + 15, 46.1 FT. E."
 & 60.2 FT. E."



This space for copy of field notes or ties to the above described landmarks

Field notes or records filed in book no. 8615
 at the State of Wisconsin Hwy Commission office.
 City of Rhinelander, Oneida County.
 Located or established by Paul M Johnson, 1962
 Title Engineer II

County Clerk's Office _____ County, Wis. } ss
 Received for record Sept 18, 1962

Copy sent to County Surveyor _____, 1962

[Signature]
 County Clerk

713