

CERTIFIED LAND CORNER RESTORATION

Index No. J-7

State of Wisconsin }  
County of LANGLADE } ss.

I WILLIAM F. KELLY, do hereby certify that on the 8<sup>th</sup> day of DECEMBER, 1982, I found evidence of the S. 1/4 corner of SECT. 8 Township 33, North, Range 9 EAST, Fourth Principal Meridian, as described hereon; and that from this evidence I established a new monument and accessories as described hereon to perpetuate the original location of this corner.

Resident witnesses:

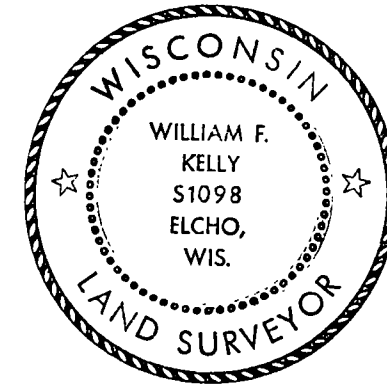
WILLIAM WILDMAN

History of original corner establishment:

ORIGINAL CORNER ESTABLISHED BY  
HIRAM C. FELLOWS IN SEPT.-OCT., 1860.

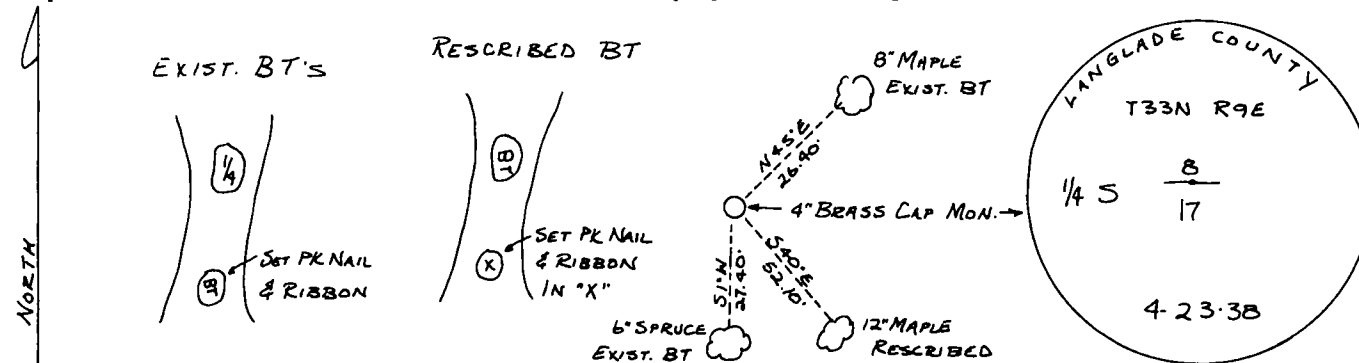
Description of corner evidence found:

FOUND IN PLACE: 4" BRASS CAP  
MONUMENT, 3 BT'S.  
RESCRIBED 1 BT.

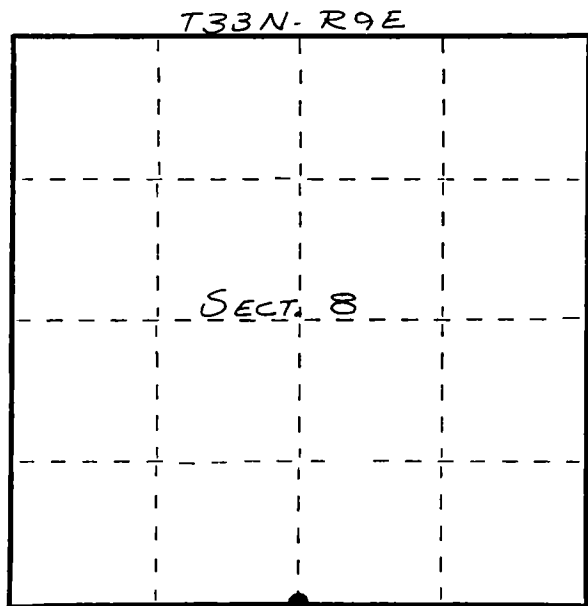


*William F. Kelly*  
12-14-82

Description of monument and accessories I established to perpetuate the original location of this corner.



FORM 985 M. C. MILLER CO., MILWAUKEE



○ = Corner monument restored.

Dated at ELCHO, Wis., this 8<sup>th</sup> day of DECEMBER, 1982.

Signature William F. Kelly Title COUNTY SURVEYOR Registration No. 1098  
(County Surveyor, Registered Land Surveyor, or other duly authorized official)

Office of Register of Deeds, County of \_\_\_\_\_, I hereby certify that the within instrument was filed in this office for record on the \_\_\_\_\_ day of \_\_\_\_\_, 19\_\_\_\_ at \_\_\_\_\_ o'clock \_\_\_\_\_ M.

(Register of Deeds)

By \_\_\_\_\_ Deputy