

LANGLADE COUNTY U.S. PUBLIC LAND CORNER RESTORATION

The South Quarter corner of Section 7, T. 33 N., R. 9 E., Langlade County, WI.

Corner was: (check all that apply)

- Restored through acceptance of an obliterated evidence location.
- Restored through acceptance of a found perpetuated location.
- Determined to be lost and re-established through proportionate methods.
 - Show bearings and distances to PLSS corners used for proportioning, and show original distances).
- Restored/recovered/re-established in a location that differs from a previously established position.
 - (Show difference in plan view below).
- Check here if additional information is shown on the reverse side of this form.

4330907 0020

Describe record evidence, recovered physical evidence, occupational evidence, testimonial evidence and all other evidence considered in the recovery/restoration of the corner.

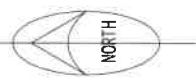
The original corner was established in 1860 by Hiram C. Fellows. Original bearing trees: ironwood, 10", N10W, II links and a sugar, 15", S20E, 25 links. This corner was monumented in 1936 as part of a township resurvey by Darwin Hintz. I don't have a complete typed set of Hintz's notes but the 1936 resurvey map shows that this corner was set by proportionate methods. 11/09/16 D. Tlusty, Cody Brauner found 4" brass capped iron pipe leaning slightly Southeast. Straightened the monument and now it is firm in the ground and the top is 1.3' above ground. The distance to the section corner east works well with the 1939 resurvey distance. I accept the monument as the best evidence of the corner as monumented in 1936. I measured ties as shown below.

Physical description of the monument set:

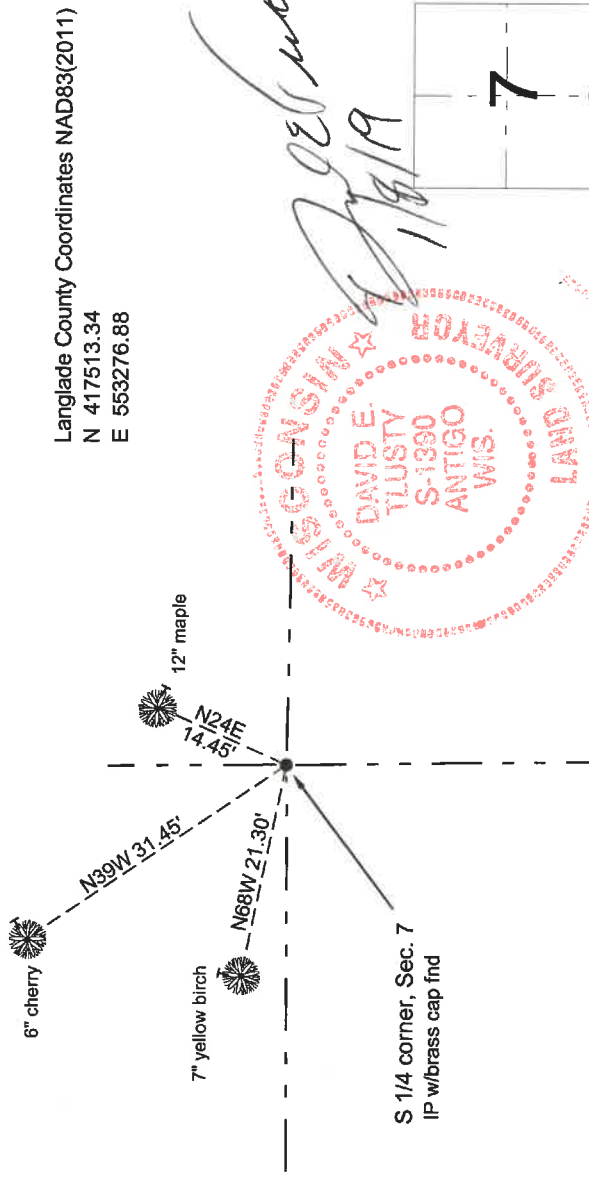
- I straightened the existing monument.
- I set a green channel steel post, West, 1.5'.

Describe the accessories used to perpetuate the corner. Include a plan view drawing and accessories found/set. Describe measuring point on bearing trees. Show any topographic features that would aid in future recovery of the corner.

Field book: FB24-38



- 4" iron pipe w/brass cap fnd
- Bearings magnetic with hand compass.
- Ties measured to an aluminum nail in a side blaze on the trees shown.
- Trees have BT signs and blaze, painted blue facing the corner.



Index No. J3 33-09

O = corner perpetuated
The South quarter corner of Section 7, T. 33 N., R. 9 E., Langlade County, WI

I, David E. Tlusty, Registered Land Surveyor, as Langlade County Surveyor, certify that the corner location on this record was determined by me and that this U.S. Public Land Survey Monument Record is correct to the best of my knowledge and belief.