

# LANGLADE COUNTY U.S. PUBLIC LAND CORNER RESTORATION

The South Quarter corner of Section 6, T. 33 N., R. 9 E., Langlade County, WI.

**Corner was: (check all that apply)**

4330906 0020

- Restored through acceptance of an obliterated evidence location.
- Restored through acceptance of a found perpetuated location.
- Determined to be lost and re-established through proportionate methods.
- Show bearings and distances to PLSS corners used for proportioning, and show original distances). Restored/recovered/re-established in a location that differs from a previously established position.
- (Show difference in plan view below).
- Check here if additional information is shown on the reverse side of this form.

**Describe record evidence, recovered physical evidence, occupational evidence, testimonial evidence and all other evidence considered in the recovery/restoration of the corner.**

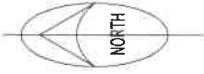
The original corner was established in 1860 by Hiram C. Fellows. Original bearing trees: tamarac, 6", N27W, 13 links and a birch, 14", S60E, 11 links. A 1938 resurvey of this part of the township by D.A. Hintz shows that this corner was set by proportionate methods. Hintz's field notes show BT's: tam stb, 16", S25E, .236 ch. and a tam stb. 14", N60E, 30 lks. In 1981, Dan Pleoger found a 4" squared cedar post and an existing scribed BT: a tamarack, 14", S25E, 14.8 feet. Pleoger found Hintz's stake and BT and replaced the stake with a 2 1/2" pipe with brass cap and marked 3 new BT's: Cedar, 12", S8E, 11.8ft, black ash, 5", N78W, 10.93 ft and a black ash, 7", N52E, 11.72 ft. On 11/10/16 D. Tlusty and Cody Brauner found the iron pipe with brass cap, top is 16" above swamp. Accepted it as the best evidence of the corner as established in 1939. We remarked existing BT's and marked a new one as shown below.

**Physical description of the monument set:**

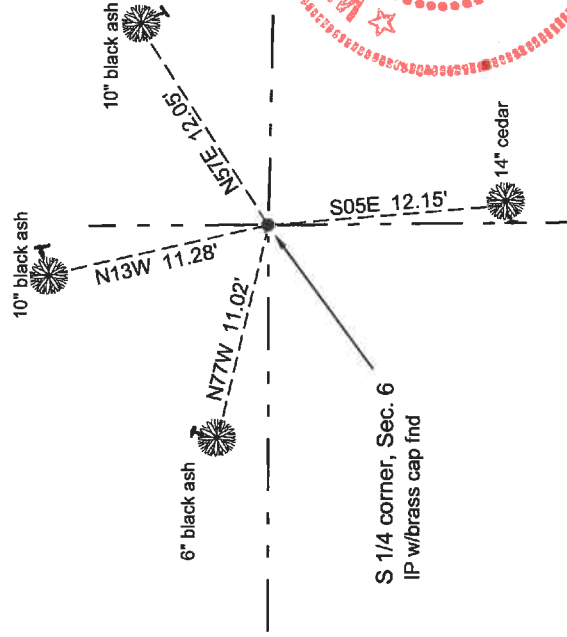
- I left the existing monument .as found.
- I set a green channel steel post with a Langlade County Forest Boundary sign, East, 0.5'

**Describe the accessories used to perpetuate the corner. Include a plan view drawing and accessories found/set. Describe measuring point on bearing trees. Show any topographic features that would aid in future recovery of the corner.**

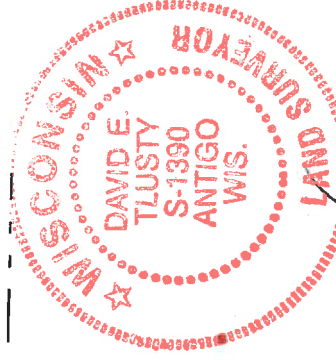
Field book: FB24-42



- iron pipe w/brass cap fnd
- Bearings magnetic with hand compass.
- Ties measured to an aluminum nail in a side blaze on the trees shown.
- Trees have BT signs and blaze, painted blue facing the corner.

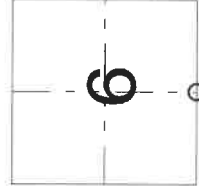


Langlade County Coordinates NAD83(2011)  
N 422873.76  
E 553351.96



*David E. Tlusty*  
9/30/19

Index No. E3 33-09



O = corner perpetuated  
The South quarter corner of Section 6, T. 33 N., R. 9 E., Langlade County, WI

I, David E. Tlusty, Registered Land Surveyor, as Langlade County Surveyor, certify that the corner location on this record was determined by me and that this U.S. Public Land Survey Monument Record is correct to the best of my knowledge and belief.