

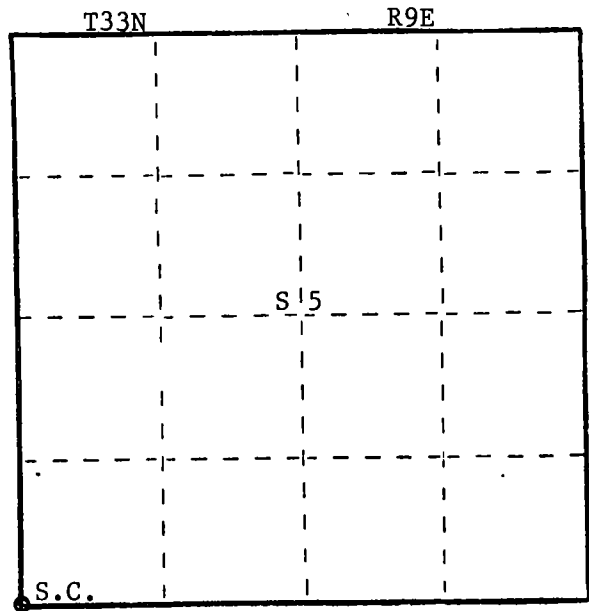
U. S. PUBLIC LAND SURVEY MONUMENT RECORD

INSTRUCTIONS :

This record shall show the location of the corner and shall include all of the following nine elements (a through i).

- (a) Identify the corner by reference to the U.S. public land survey system.

○ = Corner monument restored.



- (b) Describe any record evidence, monument evidence, occupational evidence, testimonial evidence or any other material evidence you considered, and whether the monument was found or placed.

Recovered Langlade County monument 4" diameter iron pipe with 4" diameter brass cap -stamped-

Recovered B.T. - Maple clump (5") N82W 20.59'

- (c) In the plan view drawing below, provide reference ties to at least 4 witness monuments, or, if the location is within a municipality, to at least 2 witness monuments. (Witness monuments shall be made of concrete, natural stone, iron or other equally durable material.) Describe witness monuments.

- (d) Show a plan view drawing depicting the relevant monuments and reference ties which is sufficient in detail to enable accurate relocation of the corner monument if the corner monument is disturbed. Indicate north.

Langlade County

T33N R9E

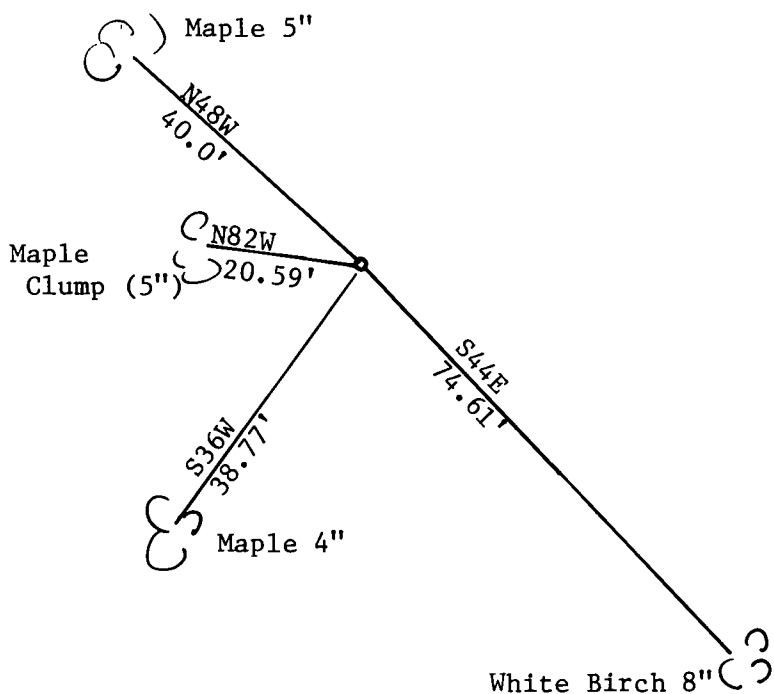
6	5
7	8

4-15-38

6-19-76

R.I.H.

685



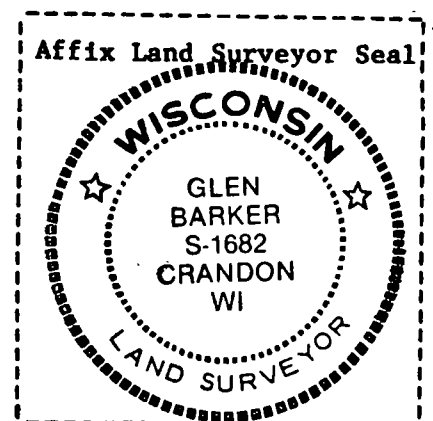
4" x 3' Iron Pipe
4" diameter brass cap

(e) Describe any material discrepancy between the location of the corner as restored or reestablished and the location of that corner as previously restored or reestablished by distance and direction. Show the discrepancy on the plan view drawing under (d), above. Show the distances between the corner as previously restored or reestablished and (1) the corner as restored or reestablished, and (2) to at least 2 of the witness monuments shown on the drawing in (d), above.

(f) Was the corner restored through acceptance of (1) an obliterated evidence location, or, (2) a found perpetuated location?

(g&h) Was the corner reestablished through lost corner proportionate methods? If so, show the method, including the directions and distances to other public land survey corners used as evidence or used for proportioning in determining the corner location?

(i) I, _____
(type or print name) certify that the corner location shown on this record was determined by me or under my direction and control and that this U.S. Public Land Survey Monument Record is correct and complete to the best of my knowledge and belief.



Signature

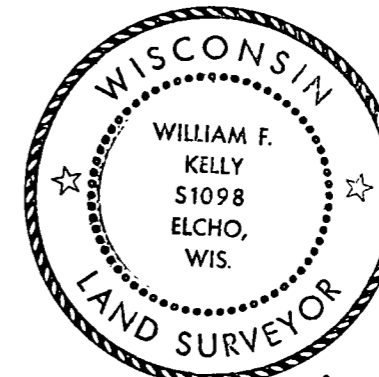
Glen Barker

Date

6/1/83

CERTIFIED LAND CORNER RESTORATION

Index No. E-5



William F. Kelly 12/2/76

State of Wisconsin }
County of LANGLADE } ss.

History of original corner establishment:

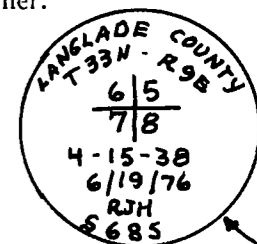
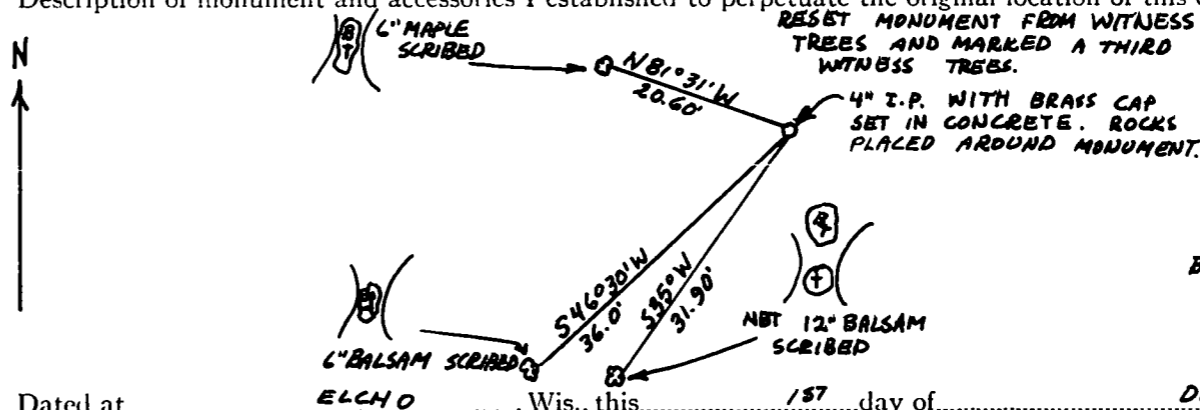
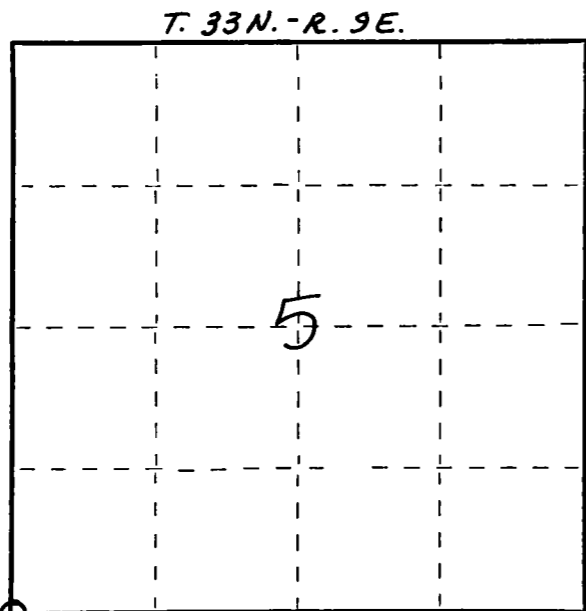
I WILLIAM F. KELLY, do hereby certify that on the 15TH day of DECEMBER, 1976, I found evidence of the SECTION corner of SECTIONS 6, 5, 7 & 8 Township _____, North, Range _____, Fourth Principal Meridian, as described hereon; and that from this evidence I established a new monument and accessories as described hereon to perpetuate the original location of this corner.

Description of corner evidence found:
FOUND 4" PIPE WITH BRASS CAP. MONUMENT WAS LYING OVER AT A 30° ANGLE. PIPE HAS BEEN HIT WITH HIGH POWERED RIFLE. PIERCING THE PIPE.

Resident witnesses:

Description of monument and accessories I established to perpetuate the original location of this corner.

FORM 985 M. C. MILLER CO., MILWAUKEE



BRASS CAP MARKED:

Dated at _____, Wis., this 15TH day of DECEMBER 1976

Signature William F. Kelly Title REGISTERED LAND SURVEYOR Registration No. 51098
(County Surveyor, Registered Land Surveyor, or other duly authorized official)

Office of Register of Deeds, County of _____, I hereby certify that the within instrument was filed in this office for record on the _____ day of _____, 19____ at _____ o'clock _____ M.

(Register of Deeds)

By _____ Deputy

○ = Corner monument restored.

CERTIFIED LAND CORNER RESTORATION

Index No. E-5

33-9

State of Wisconsin }
County of LANGLADE } ss.

History of original corner establishment:

CORNER SET 4/15/38

I RAYMOND S. HALLISY, do hereby certify that on the 19TH day of JUNE, 1976, I found evidence of the SECTION corner of 5, 6, 7, 8 Township 33, North, Range 9E, Fourth Principal Meridian, as described hereon; and that from this evidence I established a new monument and accessories as described hereon to perpetuate the original location of this corner.

Description of corner evidence found:

4" PIPE WITH BRASS CAP

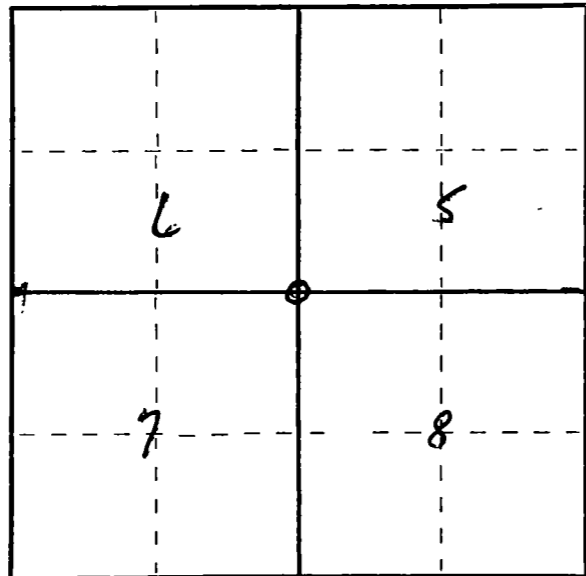
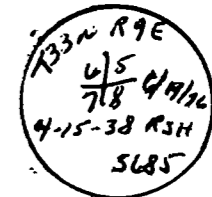
Resident witnesses:

.....
.....
.....

Description of monument and accessories I established to perpetuate the original location of this corner.

NEW BT'S

8" BALSAM S41W 35.6 FT.
4" CUMPR RED MAPLE N81W 20.1 FT



○ = Corner monument restored.

Dated at Antigo, Wis., this 19TH day of JUNE, 1976.

Signature Raymond Hallisy Title Dep Land Surveyor Registration No. 5685
(County Surveyor, Registered Land Surveyor, or other duly authorized official)

Office of Register of Deeds, County of Langlade, I hereby certify that the within instrument was filed in this office for record on the 18th day of August, 1976 at o'clock M.

.....
(Register of Deeds)

By..... Deputy