

CERTIFIED LAND CORNER RESTORATION

Index No. B-15

State of Wisconsin }
County of Langlade } ss.

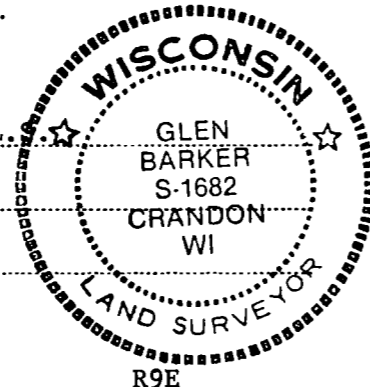
History of original corner establishment:
No evidence of any previous corner.

I, Glen Barker, do hereby certify that on the 10th day of May, 19 83, I found ~~found~~ ^{found} evidence of the NC 1/16 corner of Section 3 Township 33, North, Range 9 East, Fourth Principal Meridian, as described hereon; and that from this evidence I established a new monument and accessories as described hereon to perpetuate the original location of this corner.

Resident witnesses:

J. Clafin - R.L.

H. Wagoner



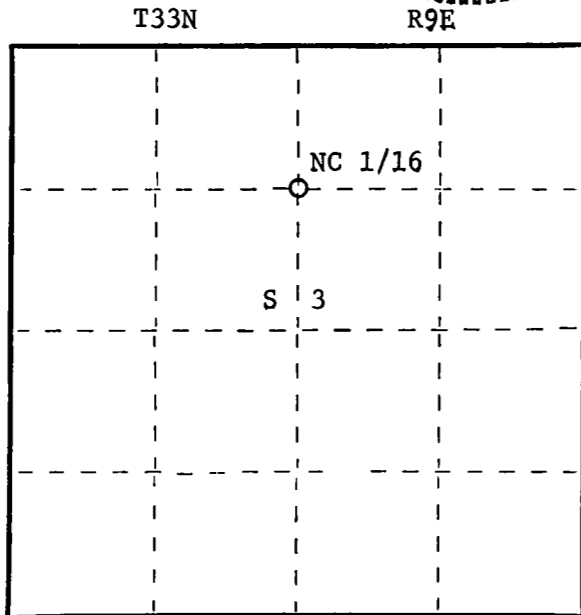
Description of corner evidence found:

Set the NC 1/16 at the intersection of the east=west quarter line of the north one-half (1/2) and the north-south quarter line of Section three (3).
NC 1/16 sets 1332.85 ft. of N 1/4 corner and 1314.93 ft. of C 1/4.

Description of monument and accessories I established to perpetuate the original location of this corner.

Set a 1" iron pipe with 2" diameter alloy cap stamped: S1682
Monument projects 18" above ground T33N R9E
Marked NBT: NC 1/16 S 3
Spruce 10" S80W 59.51 ft. CPI - 1983
Scribed 1/16 - B.T.

FORM 985 H.C. Miller Company, Inc. Stock No. 26272



○ = Corner monument restored.

Dated at Rhineland, Wis., this 9th day of June, 19 83.

Signature Glen Barker Title Registered Land Surveyor Registration No. S1682
(County Surveyor, Registered Land Surveyor, or other duly authorized official)

Office of Register of Deeds, County of _____, I hereby certify that the within instrument was filed in this office for record on the _____ day of _____, 19 _____ at _____ o'clock _____ M.

(Register of Deeds)

By _____ Deputy